

# T4710 / T4720

**PROCESS**



**Totalcomp  
T4710 / T4720 Bridgesensor**

## **Low Cost, Self Contained, DC Powered DIN Rail Mount Module Designed for Strain Gage Load Cells**

- ✓ *T4710 - 0-10 VDC output.*
- ✓ *T4720 - 4-20 mA output.*
- ✓ *Upto 30mV input.*
- ✓ *T4720 - 30mV max output.*



**Totalcomp**<sup>®</sup> Scales & Components

99 Reagent Lane • Fair Lawn, New Jersey 07410

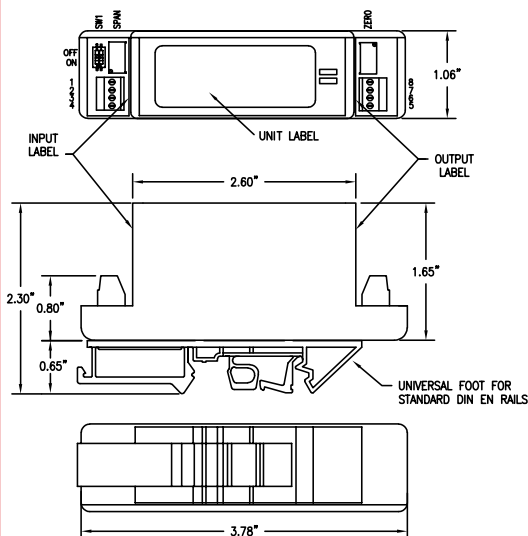
Fax: 201-797-2287 • Toll Free Fax: 888-797-2288 • Phone: 201-797-2718 • Toll Free Phone: 800-631-0347

Email: [sales@totalcomp.com](mailto:sales@totalcomp.com) • Website: [www.totalcomp.com](http://www.totalcomp.com)

## TOTALCOMP T4710 / T4720 BRIDGESENSOR

The *Totalcomp* T4710 / T4720 is a DIN Rail mount, self-contained DC powered module designed for load cell, strain gage, or single ended use. It contains a precision instrumentation amplifier, filtered output and a built-in 10VDC excitation supply capable of driving a 350 ohm bridge. The 0 to 30mV input range makes it compatible with most strain gage based load cell or pressure transducer outputs. It provides an output of 0 to 10VDC. Connections are made via easily accessible screw clamp terminal blocks. Zero and Span adjustment potentiometers are located externally as well for easy access.

Part Number	Weight
T4720-D Bridgesensor DIN Rail 4-20ma	1 lb
T4710-D Bridgesensor DIN Rail 0-10V	1 lb



TERMINAL	FUNCTION
SW1-1, SW1-2	GAIN SWITCHES
SPAN	SPAN ADJUSTMENT
1	+EXCITATION
2	- EXCITATION
3	-INPUT
4	+ INPUT
5	+ OUTPUT
6	COM
7	COM
8	+24V
ZERO	ZERO ADJUSTMENT

### Amplifier

#### Gain

(T4710) Adjustment Range 333 to 1000  
 (T4710) Input for 10VDC Output 10mV to 30mV  
 (T4720) Input for 20mA Output 10mV to 30mV

#### Linearity

(T4710) 0 to 10VDC Out  $\pm 0.01\%$   
 (T4720) 4 to 20mA Output  $\pm 0.01\%$

#### Zero Adjust

20% Max Output

#### Temperature Coefficient

0.05% / °C

#### Input Offset Voltage

$\pm 70\mu\text{V}$   
 Temperature Coefficient 0.7 $\mu\text{V}$  / °C

#### Common Mode Voltage

0 to +5 VDC

#### Common Mode Rejection - DC

100- dB

#### Input Noise

0.1Hz to 10Hz 0.3 $\mu\text{V}$  pp Typ

### Output

#### Output Range

(T4710) 0 to +10VDC  
 (T4720) 4 to 20mA

#### Load Current

(T4710) 2mA Max

#### Compliance Voltage

(T4720) 5.5V Max

#### Loop Resistance

(T4720) 250 $\Omega$ Max

### Frequency Response

2 Pole Filter DC to 10Hz

### Total RMS Gain

Temperature Coefficient 0.007% / °C

### Bridge Supply

#### Fixed Output

+10VDC $\pm 1\%$

#### Temperature Coefficient

0.05%/°C

#### Load Current

(T4710) 20mA Max

### Power Requirements

#### Voltage

18 to 26 VDC

#### Input Current (1 - 350 Ohm Bridge)

(T4710) 40 mA

(T4720) 55 mA

### Environment

#### Operating Temperature

0°C to 55°C

#### Storage Temperature

-40°C to 80°C

### Size

Size excluding Universal Foot  
 for standard DIN EN Rails

1.65" H x 1.06" W x 3.78" L  
 (42 x 27 x 96mm)

### TOTALCOMP LIMITED WARRANTY

*Totalcomp* warrants this product to be free of defects in materials and/or workmanship and suitable for the purpose(s) intended as outlined on this sheet. This warranty is effective and shall cover the purchaser for one year from the date of shipment from our plant. If this product is found to be defective by our inspection in accordance with the above listed criteria, we will replace or repair it at our expense. For warranty service, please obtain a return authorization number from us and return the item, shipping prepaid, with a written description of the problem. We will respond promptly with the results of our evaluation.



# Totalcomp<sup>®</sup>

## Scales & Components

99 Reagent Lane

Fair Lawn, NJ 07410

Fax (201) 797-2287

Toll Free Fax (888) 797-2288

Phone (201) 797-2718

Toll Free Phone (800) 631-0347

Email [sales@totalcomp.com](mailto:sales@totalcomp.com)

Website [www.totalcomp.com](http://www.totalcomp.com)