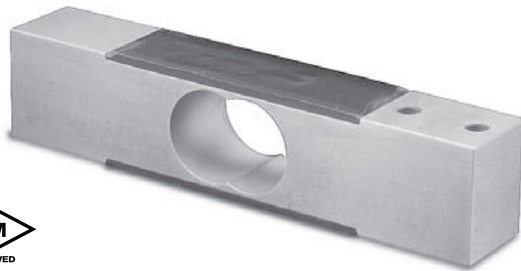


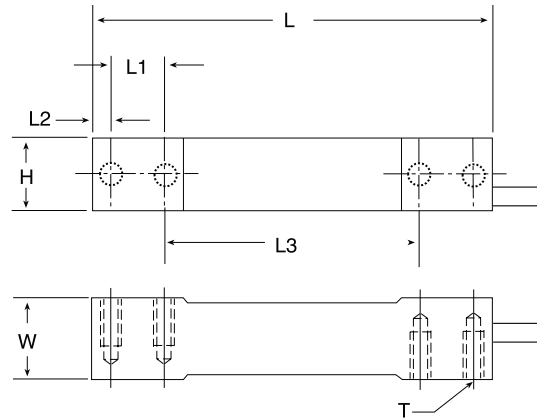
GPWS - General Sensor

Moisture proof, low profile, resistant to shock loading. Interchangeable with PWS - HBM.

2 mv/v, 0.01% nonlinearity, 350/350 ohms, 5 ft 4 cond cable, stainless steel.



Picture is a representation of actual product



RATED CAPACITY	DIMENSIONS						
	H	L	L1	L2	L3	T	W
kg/mm							
7-15	19.1	139.7	19.1	6.4	88.9	1/4-20 UNC	30.2
30-60	23.9	139.7	19.1	6.4	88.9	1/4-20 UNC	30.2
100-150	30.7	139.7	22.3	7.8	79.2	3/8-16 UNC	30.2
lb/inches							
15.4-33.1	.75	5.50	.75	.25	3.50	1/4-20 UNC	1.19
66.1-132.3	.94	5.50	.75	.25	3.50	1/4-20 UNC	1.19
220.5-330.7	1.21	5.50	.88	.31	3.12	3/8-16 UNC	1.19

SPECIFICATIONS:

Full Scale Output:	2.0 mV/V	Insulation Resistance:	1000 megohms
Bridge Resistance:	350 ohms	Seal Type:	Environmentally sealed, IP67
Material/Finish:	Stainless steel	Cable Length:	3.1 m/10'
Temperature:	Compensated range 14°F to 104°F/-10°C to 40°C	Cable Color Code:	Green + Excitation Black - Excitation White + Signal Red - Signal Yellow..... Shield
Safe Overload:	150% Full scale	Warranty:	1-year limited warranty
Rated Excitation:	10V DC (15V maximum)		
Combined Error:	0.03% Full scale		



Totalcomp® Scales & Components

99 Reagent Lane • Fair Lawn, New Jersey 07410

Fax: 201-797-2287 • Toll Free Fax: 888-797-2288 • Phone: 201-797-2718 • Toll Free Phone: 800-631-0347

Email: sales@totalcomp.com • Website: www.totalcomp.com