

Manual Revision 1.0

# **YJ-360D**

## DOT MATRIX PRINTER USER MANUAL



## 2. OPERATION

**CONTENTS****1. OUTLINE**

- 1-1. FEATURE
- 1-2. APPLICATION

**2. OPERATION**

- 2-1. SPECIFICATION
- 2-2. FUNCTION
- 2-3. SELF-TEST
- 2-4. DUMP MODE

**3. CONNECTIONS**

- 3-1. SERIAL INTERFACE
- 3-2. POWER CONNECTIONS
- 3-3. INTERFACE SETTING

**4. Changing Ribbon Cassette**

## **1.OUTLINE**

These printers are dot matrix method can be equipped in rack and stand alone on desk. for various data communication, POS terminal and various system.

Prior to actual use, please read this instruction manual carefully for your correct understanding.

### **1-1.Feature**

- Ultra small-sized desk mounting thermal printing
- Extremely light weight
- 1.6 Line/Sec speed printing
- Confirming to RS 232c and TTL and Parallel interface.
- 24 and 30, 40 columns are available.
- Self-test and Hex decimal (dump mode) applied
- Graphic printing and bar code function are available.

### **1-2.APPLICATION**

- Instruments and inspection system
- INDICATOR and scale
- F. A. system
- Receipt
- CAS SYSTEM
- Parking system
- Various data recording

## 2. OPERATION

### 2-1. SPECIFICATION

ITEM	SPECIFICATION
DESIGN	DESK TYPE
PRINT METHOD	Dot Matrix
COLUMNS	24/30/36/40 ON ENGLISH
FONT SIZE	40COL ENGLISH: 6x12, 24/30COL ENGLISH: 8x14,
DOT DENSITY	240 Dot/Line
PRINT SPEED	1.6 Line/Sec
PRINT PAPER	57(W)mmx60(D)mm ROLL PAPER
PRINT WIDTH	48.0mm
DATA BUFFER	3Kbyte
INTERFACE	RS-232C SERIAL (BAUDRATE : 2400/9600/19200/115200bps selector)
INPUT POWER	DC +12 ~ 24V, (1.5A ~2.0A) ( OPTION : External AC Adaptor 110V/220V)
SIZE (mm)	110Wx165Dx85H

### 2-2. FUNCTION

ITEM	FUNCTION
GREEN LED	ON- LINE Indicator <ul style="list-style-type: none"> <li>● ON LINE , when LED lighting.</li> <li>● Not to print. when LED OFF.</li> </ul>
ON-LINE S/W	Operation ON-LINE and OFF-LINE <ul style="list-style-type: none"> <li>● When only OFF- LINE, can advance paper.</li> <li>● Print, when only ON-LINE setting.</li> </ul>
RED LED	Indicator "FEEDING MODE AND POWER ON".
FEED S/W	Advance paper

### 2-3. SELF TEST

The self -test mode checks the printers control circuit function, setting parameter, software version, and printer quality.

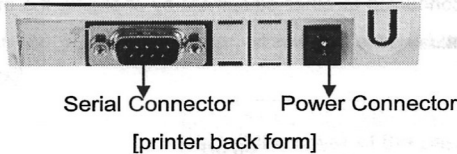
- ① Before running the self -test, make sure there is sufficient paper.
- ② On pressing ONLINE S/W, and power ON, starting the self-test.
- ③ Printer becomes ready to receive data from the host.

### 2-4. DUMP MODE

Dump mode checks whether printer receives data correctly from the host or not.

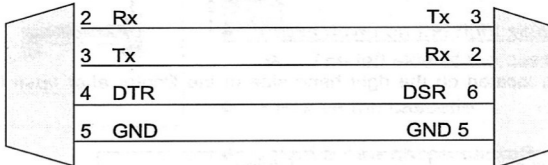
- ① Before running the self -test, make sure there is sufficient paper.
- ② On pressing ONLINE S/W, and power ON, starting the self-test.
- ③ After ending the self-test, continually press ONLINE S/W, Then print **\*\*\*[ HEX DUMP PRINT START ]\*\*\*** after 2 seconds.
- ④ Thought you don't touch any s/w, the printer take out HEXA mode changed data from host
- ⑤ If power off, printer "s recovered to normal mode

제3장. CONNECTIONS



3-1. SERIAL INTERFACE

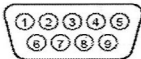
1) Interface Connection



9 Pin D-SUB Connector (FEMALE)  
Printer

9 Pin D-SUB Connector (FEMALE)  
HOST

2) Interface Pin Function



Pin	SIG.	DIRCTION	FUNCTION
2	RXD	IN	Receive Data
3	TXD	OUT	Transmitter Data
4	DTR	OUT	Data Terminal Ready
5	GND	-	Signal Ground

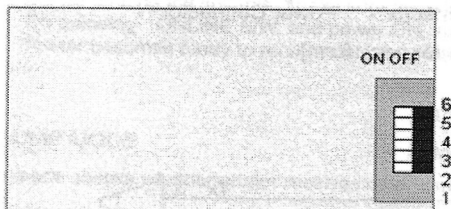
3-2. POWER CONNECTION



CONNECTOR	
+	DC +12V 1.5~2.0A
G	GND

## 3-3 INTERFACE SETTING

This printer could be connected to other equipment by changing the interface communication protocol using the DIP switch.



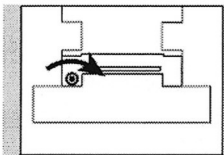
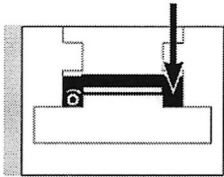
DIP Switched are located on the right hand side of the Printer after open the Top cover.

SW No.		Define
1	2	Serial Baud rate
OFF	OFF	9600bps *
ON	OFF	19200bps
OFF	ON	115200bps
ON	ON	2400bps
3		Korean Type
OFF		Completion *
ON		Combination
4		Mode Setting
OFF		INTERNAL MODE *
ON		EPSNO MODE
5	6	Columns Setting
OFF	OFF	30Columns *
ON	OFF	40Columns
OFF	ON	24Columns
ON	ON	24Columns

\* Default Mode on factory-out

## 4. Changing Ribbon Cassette

To operate your data printer, you must use a black ribbon cassette, type ERC-09.



- Lift the cover of the paper roll compartment
- To remove the paper from the ribbon cassette, turn the paper roll opposite to the paper feed direction
- Press down on the right side of cassette
  - The left side of the cassette will lift up
- Remove the cassette
- Insert a new ribbon cassette from the top
  - The cassette will lock into place
- If necessary, turn the small tension wheel located on the left in the direction of the arrow until the ribbon is stretched taut in front of paper
- To thread the paper, refer to “Changing the Paper Roll”
- Lower the cover of the paper roll compartment to close it