



**Service Manual**  
**6550/6550KGEU**  
**Portable Digital**  
**Wheelchair Scale**



0065-M262-01 Rev D  
12/07

CARDINAL SCALE MFG. CO.  
PO BOX 151 WEBB CITY, MO 64870  
PH (417) 673-4631 - FAX (417) 673-5001  
*Web Site - <http://www.detectoscale.com>*

Printed in USA

Technical Support: Ph: 866-254-8261 • [techsupport@cardet.com](mailto:techsupport@cardet.com)



# COMPATIBILITY OF MODULES – MODEL 6550 series

Ref.: WELMEC 2 (Issue 2), July 1996, paragraph 11

**Non-Automatic Weighing Instrument – Single Interval  
Certificate of EU Type-Approval No.:**

UK2655

## INDICATOR (Module 1)

Type:			758CSV
Accuracy class according to EN 45501 and OIML R76	Class IND (I, II, III, or IIII)		III
Maximum number of verification scale intervals:	n IND		5000
Fraction of mpe:	p1		0.5
Excitation voltage:	U exc	[VDC]	5
Minimum input-voltage per verification scale interval:	ΔU min	[μV]	1.2
Minimum load cell impedance:	R Lim	[Ω]	87
Load cell interface:			4-wire (no remote sense)
Additive tare, if available:	T+	[% of Max]	0
Initial zero setting range:	IZSR	[% of Max]	-2 / 2
Temperature range:	T min / T max	[°C]	-10 / +40
Test report or Test Certificate as appropriate: GB-1136	Issued by NWML	Date: 22 October 2002	

## LOAD RECEPTOR (Module 2)

Type:			6550KGEU
Size:		[mm]	711 x 813
Fraction of mpe:	p2		0.5
Number of load cells:	N		4
Reduction ratio of the load transmitting device:	R=FM/FL		1
Dead load of load receptor:	DL	[% of Max]	10
Non uniform distribution of the load	NUD	[% of Max]	20
Correction factor:	Q = 1 + (DL + T+ + IZSR+ + NUD) / 100		1.32

## LOAD CELL (Module 3)

Type:		LFB-250M	
Accuracy class according to OIML R60:	Class LC (A, B,C, or D)		C
Maximum number of load cell intervals:	n LC		3000
Fraction of mpe:	p3		0.7
Rated Output (sensitivity):	C	[mV/V]	2
Input resistance of single load cell:	R LC	[Ω]	350
Minimum load cell verification interval:	V MIN	[% of E max]	0.02
Rated capacity:	E max	[kg]	125
Minimum dead load, relative:	(E min / E max) * 100	[%]	0
Temperature range:	T min / T max	[°C]	-10 / +40
Test report or Test Certificate as appropriate:	R60/1991-DK-00.02		

## COMPLETE WEIGHING INSTRUMENT

Manufacturer: Cardinal	Type:		6550KGEU
Accuracy class according to EN 45501 and OIML R76:	Class WI (I, II, III or IIII)		III
$p1^2 + p2^2 + p3^2 = (R76 \text{ clause } 3.5.4.1)$	pi		1.0
Maximum load:	Max	[kg]	300
Number of verification scale intervals:	n		3000
Verification scale interval:	e	[kg]	0.1
Utilisation ratio of the load cell:	$\alpha = (Max / Emax) * (R / N)$		0.6
Input voltage (from the load cells):	$\Delta U = C * U_{EX} * \alpha * 1000 / n$	[μV / e]	2
Max resistance of each wire in the cable to a junction box for load cells:			5
Specific cable-length to a junction box for load cells, if any:		[m / mm <sup>2</sup> ]	300
Sectional area of each wire in the cable:	A	[mm <sup>2</sup> ]	0.5
Max length of the cable:	L	[m]	3
Temperature range:	T min / T max	[°C]	-10 / +40
Peripheral Equipment subject to legal control:			

## REQUIREMENTS TO BE SATISFIED

Passed, provided no result below is < 0

## SATISFIED

Class WI	≤	Class IND & Class LC	(WELMEC 2:1)	Class WI	PASSED
P <sub>i</sub>	≤	1	(R76:3.4.5.1)	1 - P <sub>i</sub> =	0.0
n	≤	n <sub>MAX</sub> for the class	(R76:3.2)	n <sub>MAX</sub> for the class - n =	7000
n	≤	n <sub>IND</sub>	(WELMEC 2: 4)	n <sub>ind</sub> - n =	2000
n	≤	n <sub>LC</sub>	(R76: 4.12.2)	n <sub>LC</sub> - n =	0
E <sub>MIN</sub>	≤	DL * R / N	(WELMEC 2: 6d)	(DL * R / N) - E <sub>MIN</sub> =	7.5
V <sub>MIN</sub> * √N / R	≤	e	(R76: 4.12.3)	e - (V <sub>MIN</sub> * √N / R) =	0.05
(E <sub>max</sub> /n <sub>LC</sub> )*(√N/R)	≤	e	(WELMEC 2:7)	e - ((E <sub>MAX</sub> /n <sub>LC</sub> ) * (√N / R)) =	0.017
ΔU <sub>MIN</sub>	≤		(WELMEC 2:8)	ΔU - ΔU <sub>MIN</sub> =	0.8
R <sub>LIM</sub>	≤	R <sub>LC</sub> / N	(WELMEC 2:9)	(R <sub>LC</sub> / N) - R <sub>LIM</sub> =	0
T <sub>RANGE</sub>	≤	T <sub>MAX</sub> - T <sub>MIN</sub>	(R76: 3.9.)	(T <sub>MAX</sub> - T <sub>MIN</sub> ) - T <sub>RANGE</sub> =	0
Q * Max * R / N	≤	E <sub>MAX</sub>	(R76: 4.12.1)	E <sub>MAX</sub> - (Q * Max * R / N) =	26
L / A	≤	(L / A) <sub>MAX</sub> <sup>WI</sup>	(WELMEC 2:10)	(L / A) <sub>MAX</sub> <sup>WI</sup> - (L / A) =	0

# EUROPEAN DECLARATION OF CONFORMITY

Manufacturer: Cardinal Scale Manufacturing Company  
PO Box 151  
203 East Daugherty  
Webb City, Missouri 64870 USA

Telephone No. 417-673-4631  
Fax No. 417-673-5001

Product: Non-automatic Weight Indicating Instrument  
Model Numbers 758CSV  
Serial Number EXXXYY-ZZZ  
where XXX = day of year  
YY = last two digits of year  
ZZZ = sequential number

The undersigned hereby declares, on behalf of Cardinal Scale Manufacturing Company of Webb City, Missouri, that the above-referenced product, to which this declaration relates, is in conformity with the provisions of:

Council Directive 2006/95/EC Low Voltage Directive  
Test Report Number 0206-1 Cardinal Scale Mfg. Co.

European Standard EN55022: Class B for radiated emissions  
European Standard EN61000-4-3: Class A for Radiated EMC  
European Standard EN61000-4-6: Class A for Conducted Disturbances  
Test Report Number 020424-537 Criterion Technology

Council Directive 90/384/EEC (20 June, 1990) on the Harmonization  
of the Laws of Member States relating to non-automatic Weighing  
Systems as amended by:  
Council Directive 93/68/EEC (22 July, 1993)  
Certificate of EU Type Approval Number: UK 2655

The Technical Construction File required by this Directive is maintained at the corporate headquarters of Cardinal Scale Manufacturing Company, 203 East Daugherty, Webb City, Missouri.



Ginger Harper  
Manager, Quality Assurance

**Cardinal / DETECTO**  
**TEST PROCEDURE FOR 6500 / 6550 SERIES**

No. 0065-A412-PT

Rev. K

Date 11/16/07

App By D. WINKFIELD

Page 1 of 4

**PRODUCTION TEST PROCEDURE**  
**FOR 6500 / 6550, 6500KGEU / 6550KGEU**  
**FOLDING WHEELCHAIR SCALE**

- A. EQUIPMENT REQUIRED
- B. SETUP
- C. CALIBRATION
- D. FINAL TEST



**Cardinal / DETECTO**  
**TEST PROCEDURE FOR 6500 / 6550 SERIES**

No. 0065-A412-PT	Rev. K	Date 11/16/07	App By D. WINKFIELD	Page 2 of 4
------------------	--------	---------------	---------------------	-------------

**A. Equipment Required**

- Scale under test
- Standard Hand tools
- Test Weights: Appropriate certified weights to accomplish the linearity tests

**B. Setup**

1. Assemble scale. Remove the indicator cover to expose the Cal. switch/jumper
2. Plug unit into power.

**C. Calibration**

1. Place the Calibration switch/jumper in the Cal/Setup position
2. Turn power ON
3. Follow prompts (see appropriate calibration table)

<b>758C CALIBRATION TABLE</b>	
<b>MODEL</b>	<b>6500 / 6550</b>
<b>int=</b>	<b>2</b>
<b>Unit=</b>	<b>3</b>
<b>dPP=</b>	<b>1</b>
<b>CAP=</b>	<b>800</b>
<b>CAL=</b>	<b>1</b>
<b>LOAD=</b>	<b>APPLY FULL (SCALE)</b>
<b>UnLOd=</b>	<b>REMOVE TEST WEIGHTS</b>
<b>trA=</b>	<b>1</b>
<b>trL=</b>	<b>0</b>
<b>UnS=</b>	<b>2</b>
<b>FLt=</b>	<b>1</b>
<b>Sr=</b>	<b>2</b>
<b>HOLd=</b>	<b>1</b>
<b>nin=</b>	<b>MINUTES</b>
<b>hh=</b>	<b>HOURS ( 24 hour format )</b>
<b>dd=</b>	<b>DAY</b>
<b>nn=</b>	<b>MONTH</b>
<b>yy=</b>	<b>YEAR ( Last 2 digits of current year )</b>
<b>id=</b>	<b>0</b>
<b>bni=</b>	<b>1</b>
<b>P220=</b>	<b>0</b>
<b>CrLF=</b>	<b>1</b>
<b>EOP=</b>	<b>0</b>
<b>bAUd</b>	<b>3</b>
<b>btn=</b>	<b>0</b>
<b>FEEt=</b>	<b>1</b>
<b>niCAD</b>	<b>0</b>
<b>PUO=</b>	<b>0</b>
<b>ASH=</b>	<b>9</b>
<b>SLP=</b>	<b>4</b>
<b>done</b>	

\* Reference "Compatibility of Modules" document 0065-A444-GS

**Cardinal / DETECTO**  
**TEST PROCEDURE FOR 6500 / 6550 SERIES**

No. 0065-A412-PT	Rev. K	Date 11/16/07	App By D. WINKFIELD	Page 3 of 4
------------------	--------	---------------	---------------------	-------------

<b>758CSV CALIBRATION TABLE</b>	
<b>MODEL</b>	<b>6500KGEU / 6550KGEU</b>
<b>int=</b>	<b>1</b>
<b>DPP=</b>	<b>1</b>
<b>CAP=</b>	<b>300 *</b>
<b>CAL=</b>	<b>1</b>
<b>LOAD=</b>	<b>APPLY FULL (SCALE)</b>
<b>UnLOd=</b>	<b>REMOVE TEST WEIGHTS</b>
<b>SEtGC=</b>	<b>0</b>
<b>trA=</b>	<b>1</b>
<b>trL=</b>	<b>1</b>
<b>UnS=</b>	<b>2</b>
<b>FLt=</b>	<b>1</b>
<b>Sr=</b>	<b>2</b>
<b>HOLd=</b>	<b>0</b>
<b>tyPE=</b>	<b>1</b>
<b>nin=</b>	<b>MINUTES</b>
<b>hh=</b>	<b>HOURS ( 24 hour format )</b>
<b>dd=</b>	<b>DAY</b>
<b>nn=</b>	<b>MONTH</b>
<b>yy=</b>	<b>YEAR ( Last 2 digits of current year )</b>
<b>bAUd</b>	<b>3</b>
<b>btn=</b>	<b>0</b>
<b>PUO=</b>	<b>0</b>
<b>ASH=</b>	<b>9</b>
<b>SLP=</b>	<b>4</b>
<b>HirES=</b>	<b>0</b>
<b>done</b>	

**D. Final Test**

1. Perform Shift test, using Test Weights equal to 1/2 of capacity of scale.
2. Perform Linearity test. Check both ascending and descending. See attached table.
3. Install indicator cover.
4. Check the **6550KGEU capacity label**. Must be **“Max 300kg e=0.1kg Min 2kg**
5. **The serial number of the scales must match the indicator’s serial number.**
6. Fill out “PRIDE” Form.
7. Send Unit to Packing

***Cardinal / DETECTO***  
**TEST PROCEDURE FOR 6500 / 6550 SERIES**

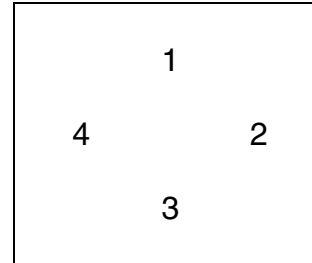
No. 0065-A412-PT	Rev. K	Date 11/16/07	App By D. WINKFIELD	Page 4 of 4
------------------	--------	---------------	---------------------	-------------

**6500 / 6550 Linearity Check Table**

**6500 / 6550**

Applied Weight	Tolerance		
<b>0</b>	0		
<b>200 lb</b>	199.8 lb	To	200.2 lb
<b>400 lb</b>	399.6 lb	To	400.4 lb
<b>600 lb</b>	599.4 lb	To	600.6 lb
<b>800 lb</b>	799.2 lb	To	800.8 lb

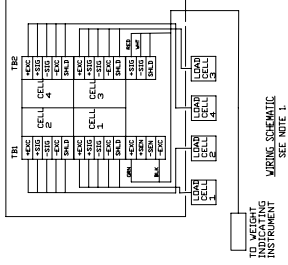
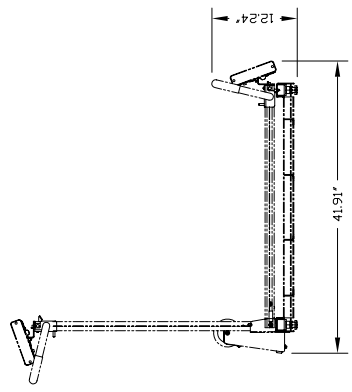
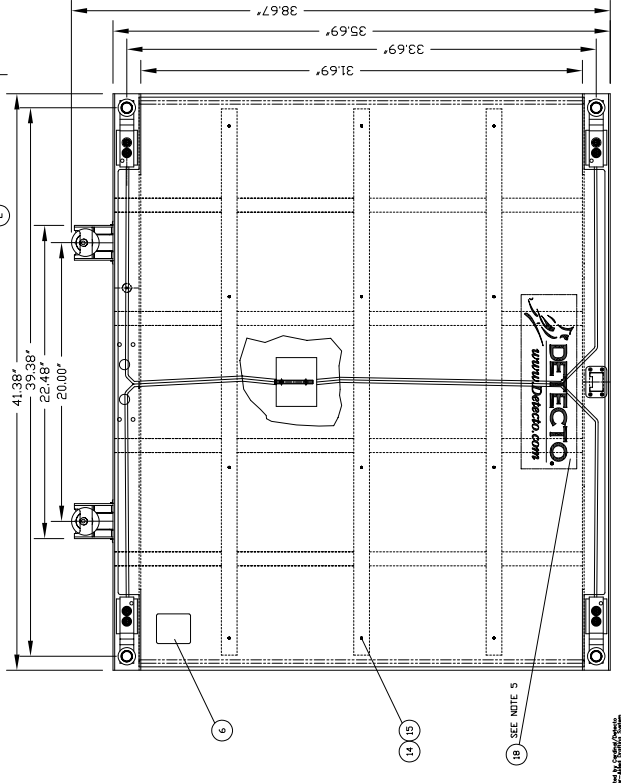
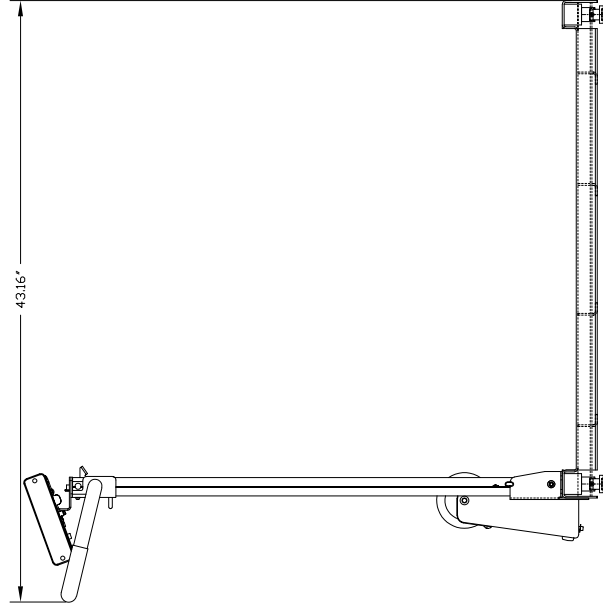
Weight  
Positions  
For Shift  
Test



**6500KGEU / 6550KGEU**

Applied Weight	Tolerance		
<b>100 kg</b>	99.9 kg	To	100.1 kg
<b>200 kg</b>	199.8 kg	To	200.2 kg
<b>300 kg</b>	299.7 kg	To	300.3 kg





- NOTES:
1. WIRE INDICATOR AND MODEL CABLES
  2. CALIBRATION AND ZERO INDICATOR PER
  3. WIRE INDICATOR PER
  4. ON MODEL 6550 ONLY ATTACH BUBBLE LEVEL 6590-0001
  5. ATTACH WITH LOCITE ADHESIVE # 6560-1072 (REF SPEC # 6535-A229-05)
  6. APPLY ADHESIVE TO SURFACE OF DETECTOR PER ITEM 15
  7. APPLY ADHESIVE TO SURFACE OF DETECTOR PER ITEM 15
  8. APPLY ADHESIVE TO SURFACE OF DETECTOR PER ITEM 15
  9. APPLY ADHESIVE TO SURFACE OF DETECTOR PER ITEM 15
  10. APPLY ADHESIVE TO SURFACE OF DETECTOR PER ITEM 15
  11. APPLY ADHESIVE TO SURFACE OF DETECTOR PER ITEM 15
  12. APPLY ADHESIVE TO SURFACE OF DETECTOR PER ITEM 15
  13. APPLY ADHESIVE TO SURFACE OF DETECTOR PER ITEM 15
  14. APPLY ADHESIVE TO SURFACE OF DETECTOR PER ITEM 15
  15. APPLY ADHESIVE TO SURFACE OF DETECTOR PER ITEM 15
  16. APPLY ADHESIVE TO SURFACE OF DETECTOR PER ITEM 15
  17. APPLY ADHESIVE TO SURFACE OF DETECTOR PER ITEM 15
  18. APPLY ADHESIVE TO SURFACE OF DETECTOR PER ITEM 15

QTY	QTY	ITEM	DESCRIPTION	MATERIAL OR SOURCE	WT EACH
1	1	18	9030-R104-08	DETECTO LOGO	-
1	1	17	6560-1072	LOCITE ADHESIVE	-
1	1	16	6680-0001	LEVEL BUBBLE	.002
1	1	15	0065-C088-08	BOTTOM COVER	19.04
1	1	14	6071-1297	SOB TRUSS HEAD #34 SELF TAPPING	.004
1	1	13	75653Y	INDICATOR	2.5
1	1	12	756C	INDICATOR	2.5
1	1	11	6680-1043	GRANIT	RIIBBER 1/4" ID.
4	4	10	6024-0039	WASHER LOCK	1/4" REG.
4	4	9	6071-1654	SOB KEY HEAD 14-20 X 3/4"	.014
2	2	8	6071-1032	SOB THUMB #32 X 1/4"	.002
4	4	7	6033-0045	NUT HEX 1/4"-20	.007
1	1	6	9030R08	SERIAL TAG ASST.	.001
1	1	5	0065-9403-0A	INDICATOR CABLE	.5
1	1	4	0065-1074-0A	DECK ASST.	60.8
1	1	3	0065-0475-0A	COLUMN ASST	15.1
1	1	2	0065-8392-08	SAFETY PIN LABEL	.001
1	1	1	0033-R044-08	ING. MTS BRKT	796C
1	1	0A	0A ASST	NUMBER	WT EACH
61	61	WT	PARTS/MATERIAL LIST		

UNLESS OTHERWISE SPECIFIED, DIMENSIONS ON THIS DRAWING ARE IN INCHES AND DECIMALS THEREOF. DIMENSIONS IN PARENTHESES ARE SUPPLEMENTARY DIMENSIONS. DIMENSIONS IN PARENTHESES TAKE PRECEDENCE OVER DIMENSIONS NOT IN PARENTHESES.

SCALE: 1" = 12" (AS SHOWN)

TITLE: FINAL ASSEMBLY 6550

DATE: 02/25/05

MODEL: 6550

WORK NO.: 0065-D476-0A

SHEET NO.: 1 OF 1

0065-D476-0A



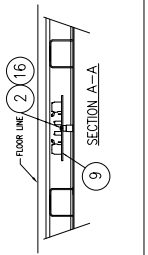
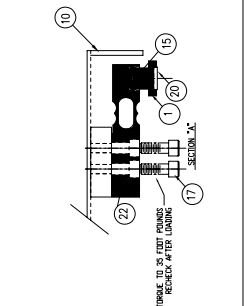
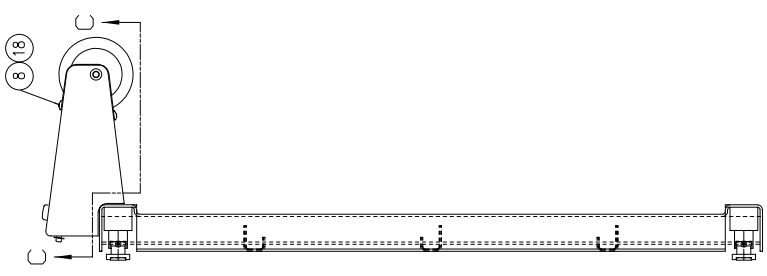
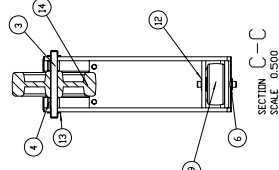
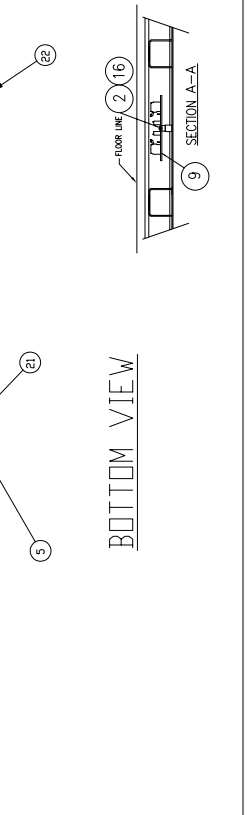
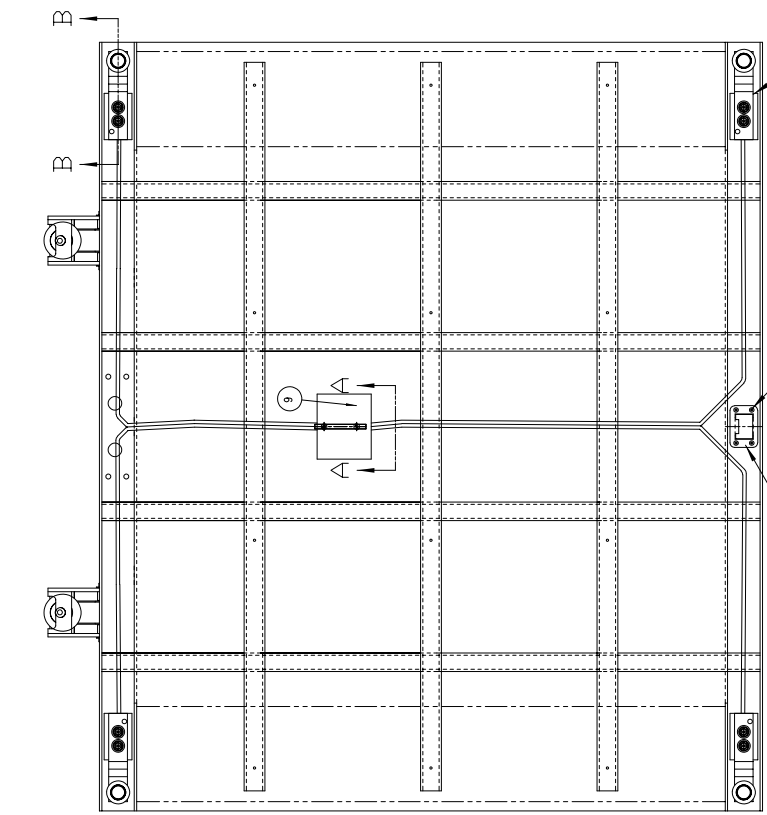
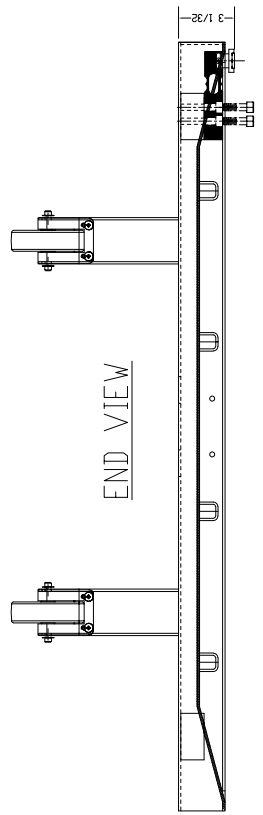


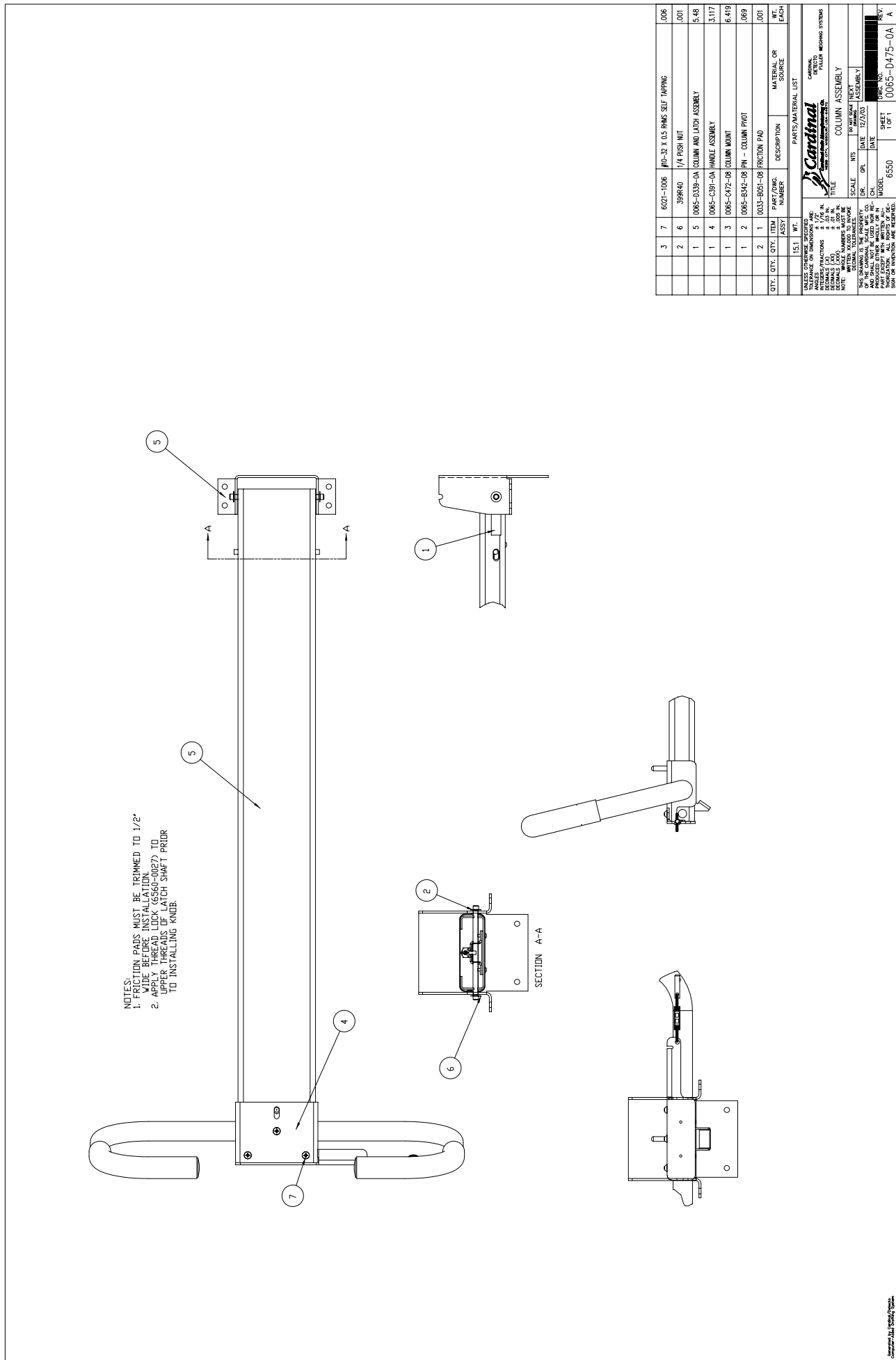
TABLE 10, 35 FOOT POUNDS  
REDUCE AFTER LAMING

UNLESS OTHERWISE SPECIFIED  
DIMENSIONS ON THIS DRAWING ARE  
IN INCHES FRACTIONS 1/16 IN.  
DECIMALS 0.005 IN.  
DIMENSIONS IN PARENTHESES ARE  
FOR REFERENCE ONLY  
NOTE: METRIC DIMENSIONS TO APPLY  
UNLESS OTHERWISE SPECIFIED  
DIMENSIONS ON THIS DRAWING ARE  
IN MILLIMETERS FRACTIONS 1/16 IN.  
DECIMALS 0.005 IN.  
DIMENSIONS IN PARENTHESES ARE  
FOR REFERENCE ONLY  
NOTE: METRIC DIMENSIONS TO APPLY  
UNLESS OTHERWISE SPECIFIED

Cardinal  
METRO  
FLOOR WEIGHING SYSTEMS

WEIGHBRIDGE ASSY  
SCALE 6550  
DATE 07/2005  
DRAWN BY TERRY  
CHECKED BY TERRY  
MODEL 10065-D474-0A  
SHEET 1 OF 1

QTY.	QTY.	ITEM	PART NAME, NUMBER	DESCRIPTION	MATERIAL OR SOURCE	WE. EACH
40.8	WE.			PARTS/MATERIAL LIST		
4	22	LFB-250M	LFB-250M LOADCELL			500
4	21	6680-080	RIBET POP, BH SS 1/8 DIA			.002
4	20	6540-1122	RUBBER FOOT .81 DIA ADHESIVE			.001
2	19	6540-1105	WHEEL - 2.0 X 15/16 X .25 ANGLE			.400
8	18	6021-2037	1/4-20 X 0.50 PHMS			.011
8	17	6021-2084	1/4-20 X 1.25 SHCS			.052
2	16	6021-0885	SCW PAN HD #6-32 X .5			.002
8	15	6021-0106	SCW PAN HD #8 X 3/8 TRF F SS			.010
2	14	57481918	WHEEL - 4 NOT DIA			.400
4	13	39981048	5/16 PUSH NUT			.002
4	12	399840	1/4 RSH NUT			.001
4	11	1930-8005-08	SNW AFB-250			.040
1	10	10065-D480-0A	BECK WEIGMENT			34.30
1	9	3500-C205-0A	TRIM BOARD			.015
2	8	10065-C462-08	WHEEL COVER			.183
1	7	10065-C478-08	WAT - 182X			.913
2	6	10065-B381-08	AXLE SHAFT - SW WHEEL			.025
1	5	10065-B559-08	LATCH COVER PLATE			.073
4	4	10065-B306-08	BUSHING - .3770x.5000x.47L			.009
2	3	10065-B305-08	AXLE SHAFT - MAIN			.070
2	2	6660-0138	SPACER # 6x .187			.001
4	1	10065-R108-08	LFB FOOT			100



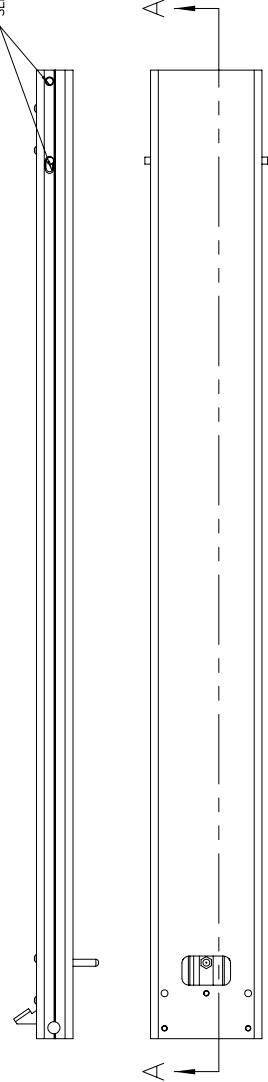
QTY	QTY	ITEM	PART NO./DESC	DESCRIPTION	MATERIAL OR SOURCE	WT. EACH
	15.1	WT.				
3	7	6021-1006	1/4-20 X 0.5 RHMS SELF TAPPING			.006
2	6	399A-0	1/4" PUSH NUT			.001
1	5	0065-0339-0A	COLUMN AND LATCH ASSEMBLY			5.48
1	4	0065-C391-0A	HANDLE ASSEMBLY			3.117
1	3	0065-0472-08	COLUMN MOUNT			6.419
1	2	0065-8342-08	PH - COLUMN PIVOT			.069
2	1	0033-8051-08	FRICTION PAD			.001
QTY	QTY	ITEM	PART NO./DESC	DESCRIPTION	MATERIAL OR SOURCE	WT. EACH
PARTS/MATERIAL LIST						

UNLESS OTHERWISE SPECIFIED: DIMENSIONS ON DIMENSIONS ARE UNLESS OTHERWISE NOTED  
 DIMENSIONS IN PARENTHESES ARE ALTERNATE DIMENSIONS  
 FINISHES AND TOLERANCES ARE AS SHOWN  
 DECIMALS (XXX) = THOUSTHS OF AN INCH  
 DECIMALS (X.XXX) = THOUSTHS OF AN INCH  
 NOTE: THIS DRAWING IS THE PROPERTY OF CARDINAL MOUNT SYSTEMS, INC. AND IS NOT TO BE REPRODUCED OR TRANSMITTED IN ANY FORM OR BY ANY MEANS, ELECTRONIC OR MECHANICAL, INCLUDING PHOTOCOPYING, RECORDING, OR BY ANY INFORMATION STORAGE AND RETRIEVAL SYSTEM.

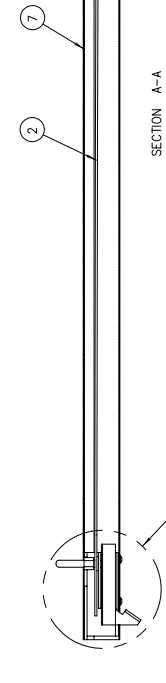
Cardinal  
 MOUNT SYSTEMS, INC.  
 12012 S. 26th Ave., Suite 100  
 Mesa, AZ 85205

TITLE: COLUMN ASSEMBLY  
 SCALE: NTS  
 DATE: 12/2/20  
 DRAWN BY: MTS  
 CHECKED BY: MTS  
 MODEL: 6550  
 SHEET: 1 OF 1  
 REVISION: A  
 10065-D475-0A

SEE NOTE 1.

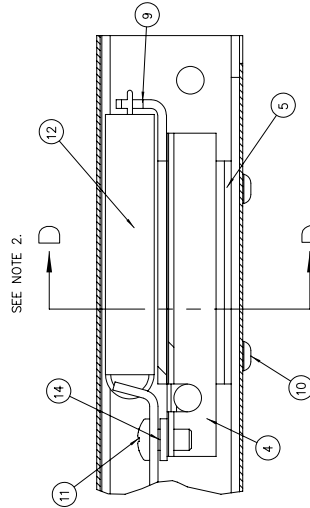


SEE DETAIL B



SECTION A-A

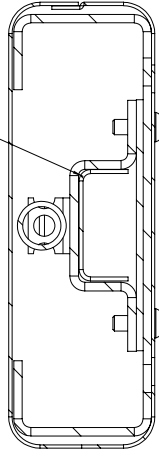
SEE DETAIL C



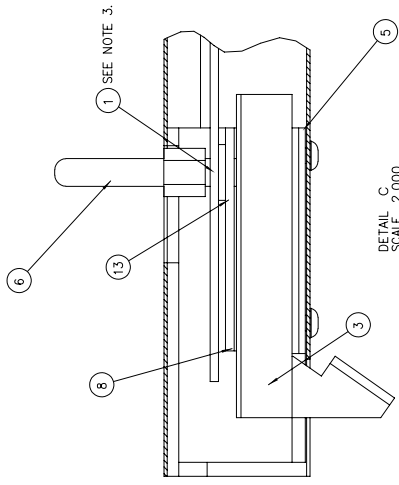
DETAIL C  
SCALE 2.000

SEE NOTE 2.

SEE NOTE 4



SECTION D-D



DETAIL C  
SCALE 2.000

- NOTES:  
1. CHECK PART FIT PRIOR TO ASSEMBLY.  
2. REMOVE PAINT BUILDUP MATERIAL FROM COLUMN WELDMENT AS REQUIRED TO ALLOW PIVOT PIN INSTALLATION AND TO ALLOW LATCH TO SLIDE WITHOUT BINDING.  
3. APPLY LOCTITE(66560-0027) TO BOTTOM THREADS. TIGHTEN UNTIL SPACER IS HELD AGAINST LATCH SLIDE. THE SPACER MUST PASS THROUGH THE LINKAGE, WASHER AND LATCH GUIDE.  
4. RADIUS OF ITEM 4 MUST FACE UP.

QTY.	QTY. ITEM	DESCRIPTION	PART/PG. NUMBER	MATERIAL OR SOURCE	WT. EACH
1	14	WASHER FLAT #10 INCON	6680-0038		.001
1	13	WASHER FLAT #A INCON	6680-0030		.002
1	12	SPRING EXC. 1.7/8 LONG	6022-0027		.020
1	11	SCW ROUND HEAD #10-32x0.375	6021-1020		.005
8	10	#-30 X.178 PIN HD OR STD Z/P	6021-0665		.002
1	9	GUIDE, LATCH LOWER	0065-C443-08		.193
1	8	GUIDE, LATCH	0065-C347-08		.135
1	7	COLUMN WELDMENT	0065-C338-0A		4.238
1	6	LATCH SHAFT	0065-B442-08		.061
2	5	LATCH SPACER	0065-B374-08		.080
1	4	LOWER LATCH BLOCK	0065-B373-0A		.118
1	3	LATCH WELDMENT	0065-B352-0A		.198
1	2	LINK BAR	0065-B351-08		.324
1	1	SPACER	0031-B014-08		.002

Part/Asy Filename: 0065-0339-0A

1  
 2  
 3  
 4  
 5  
 6  
 7  
 8  
 9  
 10  
 11  
 12  
 13  
 14

TITLE COLUMN AND LATCH ASSEMBLY  
 MODEL 6550  
 SHEET 1 OF 1  
 REV. G  
 0065-0339-0A

Generated by CamSoft/Orino on AUTOCAD



