

9523

Stainless Steel, Welded Seal, IP67



APPROVALS



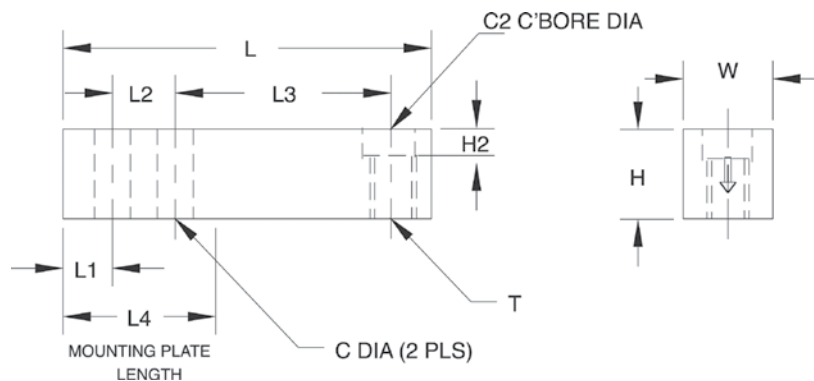
Dimensions

Picture is a representation of actual product

Rated Capacity	C	C2	H	H2	L	L1	L2	L3	L4	T	W
lb/in											
1,000-4,000	0.53	0.81	1.25	0.56	6.12	1.62	1.00	3.00	3.38	1/2-20 UNF	1.25
5,000-10,000	0.78	1.19	1.50	0.59	7.71	1.71	1.50	3.75	4.08	3/4-16 UNF	1.50
kg/mm											
453.6-1,814.4	13.5	20.6	31.8	14.2	155.5	41.2	25.4	76.2	85.9	1/2-20 UNF	31.8
2,268.0-4,535.9	19.8	30.2	38.1	15.0	195.8	43.4	38.1	95.3	103.6	3/4-16 UNF	38.1

Order Information

Load Rating		Part #	Est. Weight	Price
1,000 lb	453.6 kg	17221	3 lb	Consult
2,500 lb	1,134.0 kg	17222	3 lb	Consult
4,000 lb	1,814.4 kg	17223	3 lb	Consult
5,000 lb	2,268.0 kg	17224	5 lb	Consult
10,000 lb	4,535.9 kg	17225	5 lb	Consult



Specifications

- Full Scale Output:**
3.0 mV/V
- Output Resistance:**
350 (± 3.5) ohm
- Input Resistance:**
350 (± 3.5) ohm
- Material/Finish:**
Stainless steel
- Temperature:**
Operating range
0°F to 150°F (-18°C to 65°C)
- Seal Type:**
Welded-seal, IP67
- Safe Overload:**
150% full scale
- Safe Sideload:**
100% full scale
- Rated Excitation:**
5- 10 VDC (15 V maximum)
- Non-repeatability:**
0.01% full scale
- Combined Error:**
0.03% full scale
- Insulation Resistance:**
5,000 megohms
- Deflection at Capacity:**
1,000 lb=0.016 in (0.4 mm)
2,500 lb=0.03 in (0.8 mm)
4,000 lb=0.041 in (1.0 mm)
5,000 lb=0.035 in (0.9 mm)
10,000 lb=0.042 in (1.1 mm)
- Cable Length:**
20 ft (6.1 m)
- Cable Color Code:**
Red +Excitation
Black -Excitation
Green +Signal
White -Signal
- Warranty:**
One-year limited warranty
- Approvals:**
cFMus