

# BBS



50 TO 1,000 LBS

BENDING BEAM LOAD CELL



- RUGGED ALLOY STEEL CONSTRUCTION
- NICKEL PLATED SURFACES
- ENVIRONMENTAL PROTECTION
- LOW PROFILE

The BBS bending beam, built of rugged alloy steel and protected by nickel plating, has been used for more than a decade in applications requiring precision performance in adverse environments at a cost effective price.



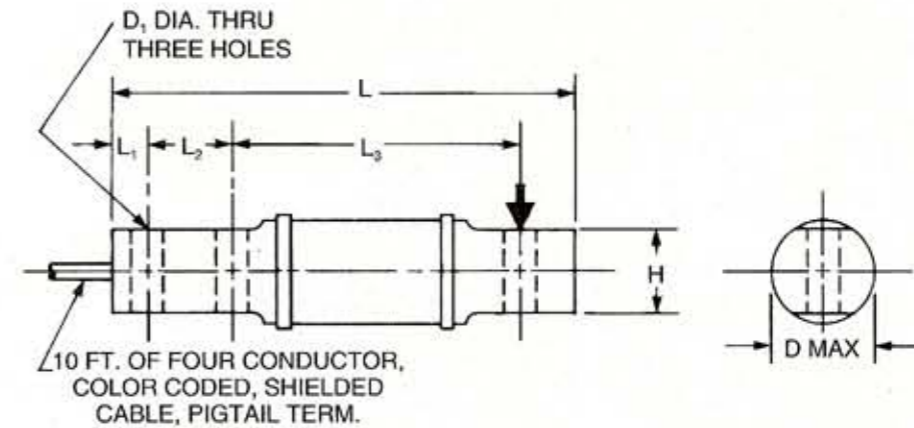
## TECHNICAL DATA

|  | 50   | 100  | 200  | 250                           | 500  | 1000 |
|--|------|------|------|-------------------------------|------|------|
| Rated Capacity (lbs)                                   |      |      |      |                               |      |      |
| Rated Output (mV/V)                                    |      |      |      | 2.0 + 0.3/-0                  |      |      |
| Combined Error Due to Non-Linearity and Hysteresis (%) |      |      |      | 0.03                          |      |      |
| Nonrepeatability (%)                                   |      |      |      | 0.01                          |      |      |
| Creep in 20 min. (%)                                   |      |      |      | 0.03                          |      |      |
| Zero Balance (%)                                       |      |      |      | 1.0                           |      |      |
| Compensated Temp. Range (°F/°C)                        |      |      |      | +15 to +115/-10 to +45        |      |      |
| Temp. Effect:  |      |      |      | Output (% of load/100°F) 0.08 |      |      |
|  |      |      |      | Zero Balance (%/100°F) 0.15   |      |      |
| Terminal Resistance:                                   |      |      |      | Input (ohms min.) 820         |      |      |
|  |      |      |      | Output (ohms) 750 ± 10        |      |      |
| Excitation Voltage:                                    |      |      |      | Maximum VDC or VAC rms 18     |      |      |
| Insulation Resistance (megohms min.)                   |      |      |      | 5000 at 50 VDC                |      |      |
| Max. Load, Safe (%)                                    |      |      |      | 150                           |      |      |
| Max. Load, Ultimate (%)                                |      |      |      | 300                           |      |      |
| Deflection at Rated Load (inches)                      | .015 | .025 | .030 | .030                          | .020 | .040 |
| Weight (lbs.)  |      |      |      | 2.2                           |      |      |

Percentages relative to rated output, except as noted.

REQUEST CERTIFIED DRAWINGS BEFORE DESIGNING MOUNTINGS OR FIXTURES. DIMENSIONS AND SPECIFICATIONS ARE SUBJECT TO CHANGE WITHOUT NOTICE.

# BBS BENDING BEAM 50 TO 1,000 LBS



| CAPACITY (POUNDS)    | DIMENSIONS (INCHES) |                |                |                |      |      |                |
|----------------------|---------------------|----------------|----------------|----------------|------|------|----------------|
|                      | L                   | L <sub>1</sub> | L <sub>2</sub> | L <sub>3</sub> | H    | D    | D <sub>1</sub> |
| 50 & 100             | 6                   | .38            | .88            | 4.25           | 1.06 | 1.38 | .31            |
| 200, 250, 500 & 1000 | 6.66                | .50            | 1.12           | 4.25           | 1.06 | 1.38 | .51            |

| CABLE COLOR CODE |        |
|------------------|--------|
| + EXC            | GREEN  |
| - EXC            | BLACK  |
| + SIG            | WHITE  |
| - SIG            | RED    |
| SHIELD           | YELLOW |

HBM, INC.  
19 Bartlett Street  
Marlboro, MA 01752  
Tel. (508) 624-4500  
Fax (508) 485-7480

REQUEST CERTIFIED DRAWINGS BEFORE DESIGNING MOUNTINGS OR FIXTURES. DIMENSIONS AND SPECIFICATIONS ARE SUBJECT TO CHANGE WITHOUT NOTICE. Printed in U.S.A.