

DSB

BEAM LOAD CELL



High quality, affordable shear beam used in harsh environment applications

- ✓ Alloy tool steel housing nickel plated finish.
- ✓ Capacities from 500 lb. to 10,000 lb.
- ✓ Accurate and reliable weighing performance.
- ✓ Four conductor, 12 ft. cable.
- ✓ Environmentally sealed.
- ✓ Interchangeable with TSB, 65023 and 5123 load cells.

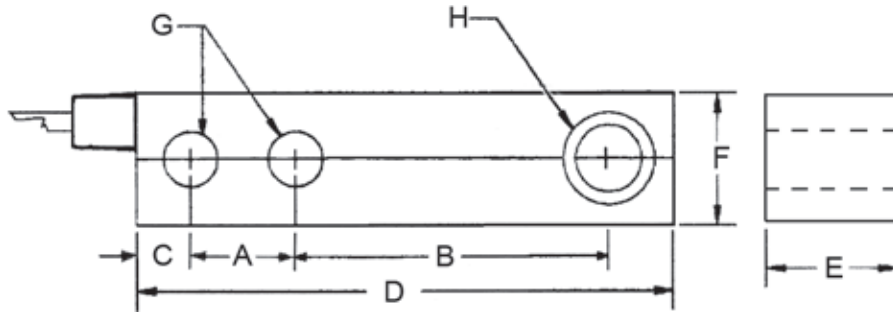


Totalcomp[®] Scales & Components

99 Reagent Lane • Fair Lawn, New Jersey 07410

Fax: 201-797-2287 • Toll Free Fax: 888-797-2288 • Phone: 201-797-2718 • Toll Free Phone: 800-631-0347

Email: sales@totalcomp.com • Website: www.totalcomp.com



Model DSB

DSB DIAMOND BEAM LOAD CELL

The *Totalcomp* DSB series beam load cells are top quality durable units. The unit features and IP67-compliant alloy tool steel metal housing to resist dust, water, and other contaminants

Part Number	Capacity	Weight	A	B	C	D	E	F	G	H
DSB-500	500 lb	3 lb	1.00	3.00	0.60	5.12	1.25	1.25	0.53	1/2-20UNF
DSB-1K	1,000 lb	3 lb	1.00	3.00	0.60	5.12	1.25	1.25	0.53	1/2-20UNF
DSB-1.5K	1,500 lb	3 lb	1.00	3.00	0.60	5.12	1.25	1.25	0.53	1/2-20UNF
DSB-2K	2,000 lb	3 lb	1.00	3.00	0.60	5.12	1.25	1.25	0.53	1/2-20UNF
DSB-2.5K	2,500 lb	3 lb	1.00	3.00	0.60	5.12	1.25	1.25	0.53	1/2-20UNF
DSB-4K	4,000 lb	3 lb	1.00	3.00	0.60	5.12	1.25	1.25	0.53	1/2-20UNF
DSB-5KSE	5,000 lb	3 lb	1.00	3.00	0.60	5.12	1.25	1.25	0.53	1/2-20UNF
DSB-5K	5,000 lb	5 lb	1.50	3.75	0.75	6.75	1.50	1.50	0.78	3/4-16UNF
DSB-10K	10,000 lb	5 lb	1.50	3.75	0.75	6.75	1.50	1.50	0.78	3/4-16UNF

Performance

Full Scale Output
3.00 mV/V

Combined Error
±0.03% FS

Nonlinearity
±0.03% FS

Hysteresis
±0.02%

Creep
±0.02% FS in 1 hour

Non-Repeatability
±0.01% FS

Zero Balance
±1.0% FS

Overload Safe

150% FS

Overload Ultimate

300% FS

Electrical

Bridge Resistance

Input 350 ohms

Output 350 ohms

Excitation Voltage

10 VDC (15VDC Max)

Insulation Resistance

10KMohms@50VDC

Temperature

Compensated Range

-10°C to +40°C

Temperature Operating Range

-18°C to +65°C

Effect on Zero Balance

0.0015% FS/deg F

Effect on FS Output

0.0008% FS/deg F

Mechanical

Material

Alloy Tool Steel

Finish

Nickel Plated

Sealing

IP67

Wiring

Cable Length & Type

20 foot, 4 conductor

Cable Color Code

+ Excitation.....Red

- Excitation.....Black

+ Output.....Green

- Output.....White

Shield.....Bare

TOTALCOMP LIMITED WARRANTY

Totalcomp warrants this product to be free of defects in materials and/or workmanship and suitable for the purpose(s) intended as outlined on this sheet. This warranty is effective and shall cover the purchaser for one year from the date of shipment from our plant. If this product is found to be defective by our inspection in accordance with the above listed criteria, we will replace or repair it at our expense. For warranty service, please obtain a return authorization number from us and return the item, shipping prepaid, with a written description of the problem. We will respond promptly with the results of our evaluation.



Totalcomp[®]

Scales & Components

99 Reagent Lane

Fair Lawn, NJ 07410

Fax (201) 797-2287

Toll Free Fax (888) 797-2288

Phone (201) 797-2718

Toll Free Phone (800) 631-0347

Email sales@totalcomp.com

Website www.totalcomp.com