

GBH35



General Sensor's GBH35 Hermetically Sealed Stainless Steel Construction

- ✓ *Stainless Steel Construction.*
- ✓ *Available in capacities from 1,000 lbs to 5,000 lbs.*
- ✓ *Hermetically Sealed.*
- ✓ *Replacement load cell for HBM H35.*

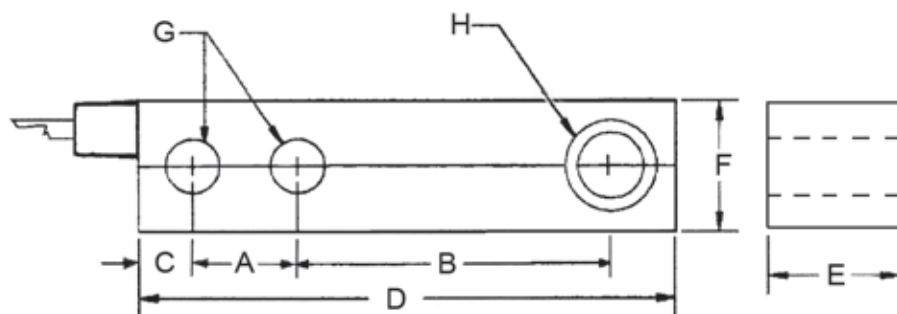


Totalcomp[®] Scales & Components

99 Reagent Lane • Fair Lawn, New Jersey 07410

Fax: 201-797-2287 • Toll Free Fax: 888-797-2288 • Phone: 201-797-2718 • Toll Free Phone: 800-631-0347

Email: sales@totalcomp.com • Website: www.totalcomp.com



GBH35

Stainless Steel Beam Load Cell

The *General Sensor GBH35 Series* beam load cells are replacement load cells for HBM H35. The GBH35 is constructed from Stainless Steel for washability and protection from harsh environments.

Part Number	Capacity	Weight	A	B	C	D	E	F	G	H
GBH35-1K	1,000 lb	3 lb	1.00	3.00	0.62	5.12	1.12	1.18	0.53	1/2-20
GBH35-2.5K	2,500 lb	3 lb	1.00	3.00	0.62	5.12	1.12	1.18	0.53	1/2-20
GBH35-4K	4,000 lb	3 lb	1.00	3.00	0.62	5.12	1.12	1.18	0.53	1/2-20
GBH35-5K-SE	5,000 lb	4 lb	1.00	3.00	0.62	5.12	1.12	1.18	0.53	1/2-20

Performance

Full Scale Output
3.0 mV/v \pm 0.1%

Combined Error
0.03% FS

Nonlinearity
 \pm 0.03% FS

Hysteresis
 \pm 0.03% FS

Creep
 \pm 0.03% FS in 30 min

Non-Repeatability
 \pm 0.03% FS

Zero Balance

\pm 1.0% FS

Overload Safe

150%

Overload Ultimate

300% FS

Electrical

Bridge Resistance

Input 387 ohm \pm 5 ohm

Output 350 ohm \pm 3 ohm

Excitation Voltage

10VDC (15VDC Max)

Insulation Resistance

\geq 5000 M ohm (50VDC)

Temperature

Compensated Range

-10°C to +50°C

Temperature Operating Range

-10°C to +70°C

Effect on Zero Balance

\leq 0.002% FS/deg °C

Effect on FS Output

\leq 0.002% FS/deg °C

Mechanical

Material

Stainless Steel

Sealing

IP67

Wiring

Cable Length & Type

20 foot, 4 conductor

Cable Color Code

+ Excitation.....Red

- Excitation.....Black

+ Output.....Green

- Output.....White

Shield.....Bare

TOTALCOMP LIMITED WARRANTY

Totalcomp warrants this product to be free of defects in materials and/or workmanship and suitable for the purpose(s) intended as outlined on this sheet. This warranty is effective and shall cover the purchaser for one year from the date of shipment from our plant. If this product is found to be defective by our inspection in accordance with the above listed criteria, we will replace or repair it at our expense. For warranty service, please obtain a return authorization number from us and return the item, shipping prepaid, with a written description of the problem. We will respond promptly with the results of our evaluation.



Totalcomp[®]

Scales & Components

99 Reagent Lane

Fair Lawn, NJ 07410

Fax (201) 797-2287

Toll Free Fax (888) 797-2288

Phone (201) 797-2718

Toll Free Phone (800) 631-0347

Email sales@totalcomp.com

Website www.totalcomp.com