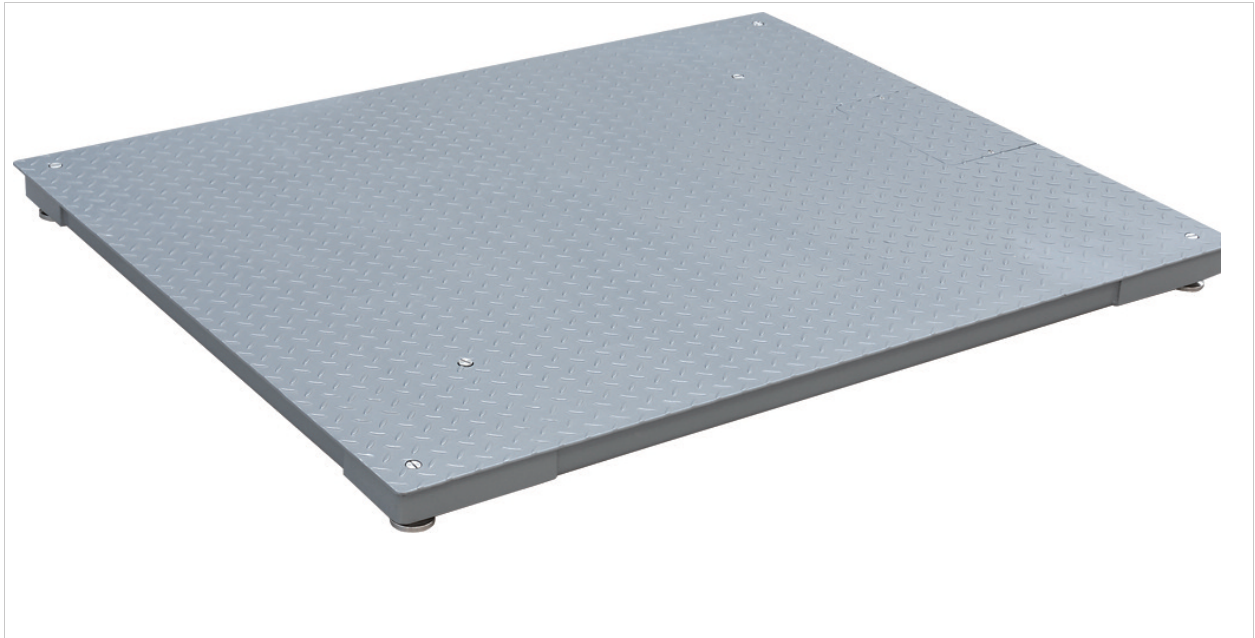


Hazardous Floor Base



**High performance powder coated
heavy duty floor scale
for hazardous environment.**

Blue jacket hostile environment home run cable.

- ✓ *Channeled & checkered construction.*
- ✓ *(4)NTEP & FM Approved alloy steel shear beam load cells.*
- ✓ *FM Approved Summing box.*
- ✓ *Platform sizes from 3.0' x 3.0' to 5' x 5'.*
- ✓ *Powder coat finish.*
- ✓ *Optional ramps.*
- ✓ *Capacities from 2,500 to 10,000 lbs.*



Totalcomp[®] Scales & Components

99 Reagent Lane • Fair Lawn, New Jersey 07410

Fax: 201-797-2287 • Toll Free Fax: 888-797-2288 • Phone: 201-797-2718 • Toll Free Phone: 800-631-0347

Email: sales@totalcomp.com • Website: www.totalcomp.com

Specifications

Totalcomp Hazardous Floor Base

High performance powder coated heavy duty floor scale for hazardous environment. Already configured with FM Approved summing box, load cells and hazardous home run cable. Standard features include: Top access FM Approved signal trim junction box. 20ft blue jacket hostile environment home run cable. (4) NTEP & FM Approved H8C alloy steel shear beam load cells. Heavy powder coated diamond safety deck. 4 adjustable mild steel foot. Threaded eye bolt holes for easy lifting. Top holes for easy leveling. NTEP 16-016 Class III 5,000 div

Part Number	Size	Capacity	Weight
T3x3-2.5K	3x3	2500 lb	240 lb
T3x3-5K	3x3	5000 lb	240 lb
T3x3-10K	3x3	10000 lb	245 lb
T3x4-2.5K	3x4	2500 lb	280 lb
T3x4-5K	3x4	5000 lb	280 lb
T3x4-10K	3x4	10000 lb	285 lb
T4x4-2.5K	4x4	2500 lb	370 lb
T4x4-5K	4x4	5000 lb	370 lb
T4x4-10K	4x4	10000 lb	375 lb
T4x5-2.5K	4x5	2500 lb	430 lb
T4x5-5K	4x5	5000 lb	430 lb
T4x5-10K	4x5	10000 lb	435 lb
T5x5-2.5K	5x5	2500 lb	540 lb
T5x5-5K	5x5	5000 lb	540 lb
T5x5-10K	5x5	10000 lb	545 lb

Finish

Powder coat

Load Cell Output

3 mv/v FS

Excitation

10 VDC/AC std. 20 VDC/AC max

Cable

20 foot, 4 conductor

Operating Temperature

+14 F to 122 F)-10 C to - 50 C)

Available Options

Hold Down Bracket

I d i t C I

TOTALCOMP LIMITED WARRANTY

Totalcomp warrants this product to be free of defects in materials and/or workmanship and suitable for the purpose(s) intended as outlined on this sheet. This warranty is effective and shall cover the purchaser for one year from the date of shipment from our plant. If this product is found to be defective by our inspection in accordance with the above listed criteria, we will replace or repair in at our expense. For warranty service, please obtain a return authorization number from us and return the item, shipping prepaid, with a written description of the problem. We will respond promptly with the results of our evaluation.



Scales & Components

99 Reagent Lane
Fair Lawn, NJ 07410
Fax (201) 797-2287
Toll Free Fax (888) 797-2288
Phone (201) 797-2718
Toll Free Phone (800) 631-0347
Email sales@totalcomp.com
Website www.totalcomp.com