

# Shear Beam Load Cell

## NBB-SS



## Superior Quality, Stainless Steel NBB-SS Beam Load Cells

- ✓ *20 foot 4 conductor cable.*
- ✓ *Low profile design.*
- ✓ *Interchangeable with HBM® Model BBS.*
- ✓ *Capacities from 50 lbs. to 7.5k.*

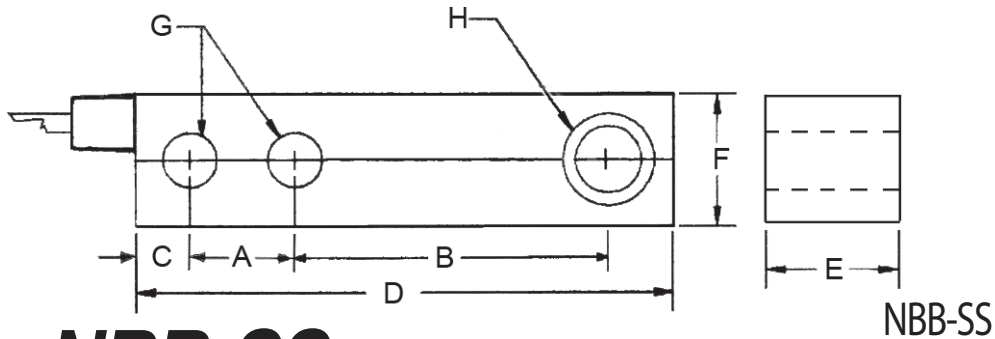


**Totalcomp**® Scales & Components

13-01 Pollitt Drive • Fair Lawn, New Jersey 07410

Fax: 201-797-2287 • Toll Free Fax: 888-797-2288 • Phone: 201-797-2718 • Toll Free Phone: 800-631-0347

Email: [sales@totalcomp.com](mailto:sales@totalcomp.com) • Website: [www.totalcomp.com](http://www.totalcomp.com)



## NBB-SS BEAM LOAD CELL

*Interchangeable with HBM Model BBS.*

The Nikkei NBB-SS bending beam load cells are built to meet or exceed all manufactures specs. Constructed from Stainless Steel for harsh washdown environment.

Part Number	Capacity	Weight	A	B	C	D	E	F	G	H
NBB-50-SS	50 lb	2 lb	0.875	4.25	0.38	6.00	1.38	1.38	0.281	0.328
NBB-100-SS	100 lb	3 lb	0.875	4.25	0.38	6.00	1.38	1.38	0.281	0.328
NBB-200-SS	200 lb	3 lb	0.875	4.25	0.38	6.62	1.38	1.38	0.281	0.328
NBB-250-SS	250 lb	3 lb	0.875	4.25	0.38	6.62	1.38	1.38	0.281	0.328
NBB-500-SS	500 lb	3 lb	0.875	4.25	0.38	6.62	1.38	1.38	0.281	0.328
NBB-1K-SS	1,000 lb	3 lb	0.875	4.25	0.38	6.62	1.38	1.38	0.281	0.328
NBB-1KLE-SS	1,000 lb	9 lb	0.875	4.25	0.38	11.38	1.38	1.38	0.281	0.328
NBB-2.5K-SS	2,500 lb	10 lb	0.875	4.25	0.38	11.38	1.38	1.38	0.281	0.328
NBB-5K-SS	5,000 lb	28 lb	0.875	4.25	0.38	12.75	1.38	1.38	0.281	0.328
NBB-7.5K-SS	7,500 lb	28 lb	0.875	4.25	0.38	12.75	1.38	1.38	0.281	0.328

### Performance

**Full Scale Output**  
2.00 mV/V

**Combined Error**  
±0.03% FSO

**Nonlinearity**  
±0.03% FSO

**Hysteresis**  
±0.02%

**Creep**  
±0.03% FS in 20 min

**Non-Repeatability**  
±0.01% FSO

### Zero Balance

±1.0% FSO

**Overload Safe**  
150% FSO

**Overload Ultimate**  
300% FSO

### Electrical

#### Bridge Resistance

**50 lb. - 1K**  
Input 810 ohms  
Output 750 ohms  
**1KLE - 7.5K**  
Input 375 ohms  
Output 350 ohms

### Excitation Voltage

10VDC (15VDC Max)

**Insulation Resistance**  
10KM ohms @ 50VDC

### Temperature

**Compensated Range**  
-10°C to +40°C

**Temperature Operating Range**  
-16°C to +65°C

**Effect on Zero Balance**  
0.0015% FSO/deg F

**Effect on FS Output**  
0.0008% FSO/deg F

### Mechanical

**Material**  
Stainless Steel

**Sealing**  
IP67

### Wiring

**Cable Length & Type**  
20 foot, 4 conductor

### Cable Color Code

+ Excitation.....Green  
- Excitation.....Black  
+ Output.....White  
- Output.....Red  
Shield.....Bare

### TOTALCOMP LIMITED WARRANTY

*Totalcomp* warrants this product to be free of defects in materials and/or workmanship and suitable for the purpose(s) intended as outlined on this sheet. This warranty is effective and shall cover the purchaser for one year from the date of shipment from our plant. If this product is found to be defective by our inspection in accordance with the above listed criteria, we will replace or repair it at our expense. For warranty service, please obtain a return authorization number from us and return the item, shipping prepaid, with a written description of the problem. We will respond promptly with the results of our evaluation.



# Totalcomp<sup>®</sup>

## Scales & Components

13-01 Pollitt Drive  
Fair Lawn, NJ 07410

Fax (201) 797-2287

Toll Free Fax (888) 797-2288

Phone (201) 797-2718

Toll Free Phone (800) 631-0347

Email [sales@totalcomp.com](mailto:sales@totalcomp.com)

Website [www.totalcomp.com](http://www.totalcomp.com)