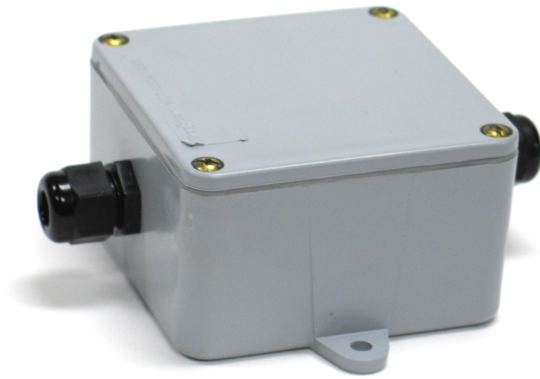


PVC Single Cell Splice Box

NM-44B



APPLICATIONS:

- For splicing or extending load cell cable

STANDARD FEATURES:

- Low cost/high performance high impact.
- Non-metallic PVC enclosure with separate input and output cable fittings.
- No Soldering, compression or swagged fittings are required.
- Weatherproof gasket cover for wet or corrosive environments indoors or outdoors.

SPECIFICATIONS:

Dimensions:	4" W x 4" L x 2.5" D
Mounting Ears:	Molded into base
Cable Fittings:	Nylon waterproof strain-relief type
Cable Diameter:	0.69 - 395
Terminal Block:	Rated 300 V/15A; 7-position, screw terminal can each accommodate up to #10 AWG