

SHEAR BEAM LOAD CELL

NSSB



Nikkei's NSSB Hermetically Sealed Stainless Steel Construction

- ✓ *Stainless Steel Construction*
- ✓ *Interchangeable with HBM SB3 and RTI SSB*
- ✓ *Hermetically Sealed*
- ✓ *Available in capacities from 1,000 lbs to 40,000 lbs*

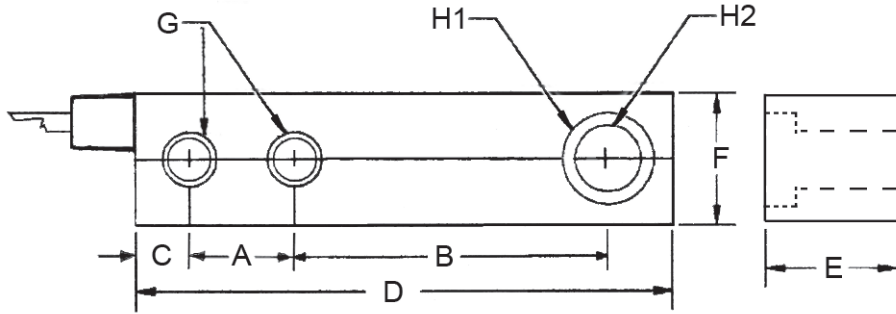


Totalcomp[®] Scales & Components

13-01 Pollitt Drive • Fair Lawn, New Jersey 07410

Fax: 201-797-2287 • Toll Free Fax: 888-797-2288 • Phone: 201-797-2718 • Toll Free Phone: 800-631-0347

Email: sales@totalcomp.com • Website: www.totalcomp.com



NSSB

NSSB NIKKEI SHEAR BEAM LOAD CELL

The *Nikkei* NSSB Series beam load cells are interchangeable with HBM SB3 beam load cells and RTI SSB beam load cells. The NSSB is constructed from Stainless Steel for washability and protection from harsh environments.

Part Number	Capacity	Weight	A	B	C	D	E	F	G	H1	H2
NSSB-1K	1,000 lb	6 lb	2.50	3.88	0.75	8.00	1.88	1.45	0.53	1.19	0.68
NSSB-2K	2,000 lb	6 lb	2.50	3.88	0.75	8.00	1.88	1.45	0.53	1.19	0.68
NSSB-4K	4,000 lb	6 lb	2.50	3.88	0.75	8.00	1.88	1.45	0.53	1.19	0.68
NSSB-5K	5,000 lb	6 lb	2.50	3.88	0.75	8.00	1.88	1.45	0.53	1.19	0.68
NSSB-10K	10,000 lb	12 lb	2.63	4.88	0.81	9.25	2.75	1.88	0.88	1.63	1.00
NSSB-40K	40,000 lb	26 lb	3.50	6.25	1.25	12.50	3.75	2.75	1.31	1.88	1-1/2-12

Performance

Full Scale Output
2.0 mv/v \pm 0.1%

Combined Error
0.03% FS

Nonlinearity
0.03% FS

Hysteresis
0.05% FS

Creep
0.02% FS in 1 hour

Non-Repeatability
0.02% FS

Zero Balance
 \pm 1.0% FS

Overload Safe
150% FS

Overload Ultimate
300% FS

Electrical

Bridge Resistance
Input 350 ohms
Output 350 ohms

Excitation Voltage
15VDC

Insulation Resistance
10KMohms@50VDC

Temperature

Compensated Range
0 - 150 deg. F

Temperature Operating Range
-10 to 160 deg. F

Effect on Zero Balance
0.0011% FS/deg. F

Effect on FS Output
0.0008% FS/deg. F

Mechanical

Material
Stainless Steel

Sealing
IP67

Wiring

Cable Length & Type
20 foot, 4 conductor

Cable Color Code

+ Excitation.....Green
- Excitation.....Black
+ Output.....White
- Output.....Red
Shield.....Orange

TOTALCOMP LIMITED WARRANTY

Totalcomp warrants this product to be free of defects in materials and/or workmanship and suitable for the purpose(s) intended as outlined on this sheet. This warranty is effective and shall cover the purchaser for one year from the date of shipment from our plant. If this product is found to be defective by our inspection in accordance with the above listed criteria, we will replace or repair it at our expense. For warranty service, please obtain a return authorization number from us and return the item, shipping prepaid, with a written description of the problem. We will respond promptly with the results of our evaluation.



Totalcomp[®]

Scales & Components

13-01 Pollitt Drive
Fair Lawn, NJ 07410

Fax (201) 797-2287

Toll Free Fax (888) 797-2288

Phone (201) 797-2718

Toll Free Phone (800) 631-0347

Email sales@totalcomp.com

Website www.totalcomp.com