

**TCM**

**CANISTER LOAD CELL w/Tank Mount Assembly**



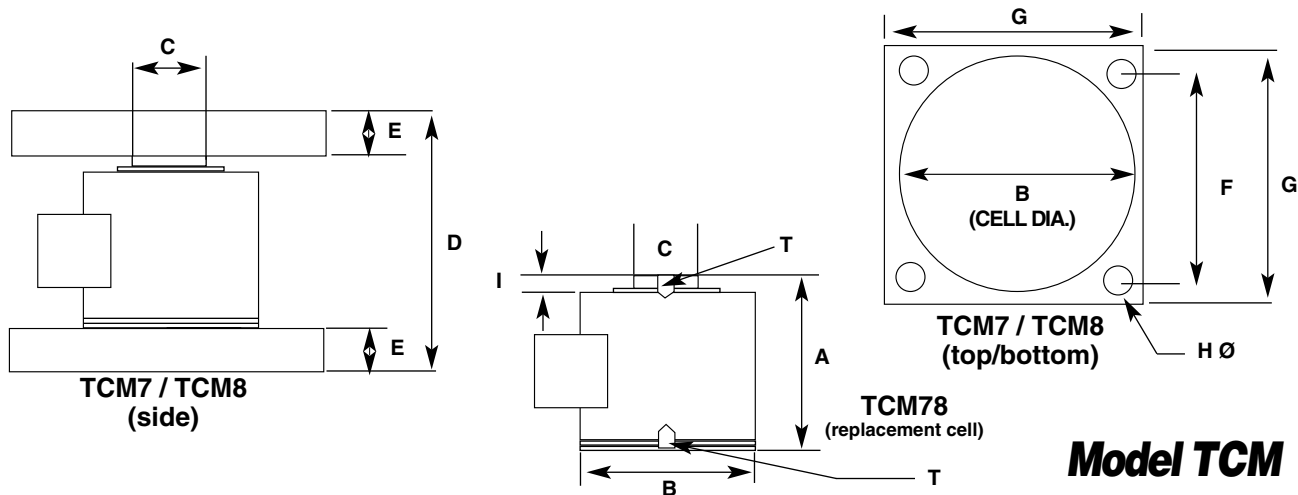
**TOTALCOMP  
Model TCM Series**

- ✓ **Capacities from 1K to 250K - IN STOCK!**
- ✓ **Stainless Steel Canister Load Cell.**
- ✓ **Hermetically Sealed.**
- ✓ **Self Checking.**
- ✓ **Stainless Steel Tank Mount Assembly.**
- ✓ **Floor or Structure mountable.**



**Totalcomp<sup>®</sup>** Scales & Components

99 Reagent Lane • Fair Lawn, New Jersey 07410  
Fax: 201-797-2287 • Toll Free Fax: 888-797-2288 • Phone: 201-797-2718 • Toll Free Phone: 800-631-0347  
Email: [sales@totalcomp.com](mailto:sales@totalcomp.com) • Website: [www.totalcomp.com](http://www.totalcomp.com)



## STAINLESS STEEL CANISTER LOAD CELL W/ TANK MOUNT ASSEMBLY

The *Totalcomp* TCM Series Tank Mount Assembly contains a hermetically sealed stainless steel canister load cell. Suited for tank, bin, hopper, and silo weighing as well as batching, blending, mixing, level and inventory weighing. The lower plate is rigidly mounted to the load cell and the top plate allows horizontal expansion but does not allow the top plate to separate from the load cell.

MODEL	CAPACITY	WEIGHT	A	B	C	D	E	F	G	H	I	T
TCM7-1K-SS	1,000 lb.	20 lb.	3.25	3.00	1.25	5.25	1.00	3.50	5.00	.560	.35	1/2-20UNFx.50DP
TCM7-2K-SS	2,000 lb.	20 lb.	3.25	3.00	1.25	5.25	1.00	3.50	5.00	.560	.35	1/2-20UNFx.50DP
TCM7-5K-SS	5,000 lb.	20 lb.	3.25	3.00	1.25	5.25	1.00	3.50	5.00	.560	.35	1/2-20UNFx.50DP
TCM8-10K-SS	10,000 lb.	41 lb.	3.25	3.00	1.25	5.25	1.00	6.00	8.00	.560	.35	1/2-20UNFx.50DP
TCM8-20K-SS	20,000 lb.	41 lb.	3.25	3.00	1.25	5.25	1.00	6.00	8.00	.560	.35	1/2-20UNFx.50DP
TCM8-25K-SS	25,000 lb.	41 lb.	3.25	3.00	1.25	5.25	1.00	6.00	8.00	.560	.35	1/2-20UNFx.50DP
TCM8-50K-SS	50,000 lb.	41 lb.	3.25	3.00	1.25	5.25	1.00	6.00	8.00	.560	.35	1/2-20UNFx.50DP
TCM8-75K-SS	75,000 lb.	45 lb.	5.00	4.00	2.31	5.25	1.00	6.00	8.00	.560	.35	1/2-20UNFx.50DP
TCM8-100K-SS	100,000 lb.	45 lb.	5.00	4.00	2.31	7.00	1.00	6.00	8.00	.560	.550	1/2-20UNFx.50DP
TCM8-150K-SS	150,000 lb.	45 lb.	7.25	6.00	3.00	9.25	1.00	6.00	8.00	.625	1.10	1/2-20UNFx.50DP
TCM8-200K-SS	200,000 lb.	45 lb.	7.25	6.00	3.00	9.25	1.00	6.00	8.00	.625	1.10	1/2-20UNFx.50DP
TCM8-250K-SS	250,000 lb.	45 lb.	7.25	6.00	3.00	9.25	1.00	6.00	8.00	.625	1.10	1/2-20UNFx.50DP

### Performance

Full Scale Output  
2.00 mV/V  
Combined Error  
±0.03% FS  
Nonlinearity  
±0.05% FS  
Hysteresis  
±0.02%  
Creep  
±0.05% FS in 1 hour  
Non-Repeatability  
±0.01% FS  
Zero Balance  
±1% FS

Overload, Safe  
150% FS

Overload, Ultimate  
300% FS

### Electrical

Bridge Resistance  
Input 350 ohms  
Output 350 ohms  
Excitation Voltage  
10VDC (15VDC Max)  
Insulation Resistance  
5000Mohms@50VDC

### Temperature

Compensated Range  
-10°C to +40°C  
Temperature Operating Range  
-16°C to +65°C  
Effect on Zero Balance  
0.0013% FS/deg F  
Effect on FS Output  
0.0007% FS/deg F

### Mechanical

Material  
17-4 Stainless Steel  
Finish  
Satin Polish  
Sealing  
IP67

### Wiring

Cable Length & Type  
30 foot, 4 conductor  
Cable Color Code  
+ Excitation ..... Green  
- Excitation ..... Black  
+ Output ..... White  
- Output ..... Red  
Shield ..... Bare

### TOTALCOMP LIMITED WARRANTY

*Totalcomp* warrants this product to be free of defects in materials and/or workmanship and suitable for the purpose(s) intended as outlined on this sheet. This warranty is effective and shall cover the purchaser for one year from the date of shipment from our plant. If this product is found to be defective by our inspection in accordance with the above listed criteria, we will replace or repair it at our expense. For warranty service, please obtain a return authorization number from us and return the item, shipping prepaid, with a written description of the problem. We will respond promptly with the results of our evaluation.



# Totalcomp®

## Scales & Components

99 Reagent Lane  
Fair Lawn, NJ 07410  
Fax (201) 797-2287  
Toll Free Fax (888) 797-2288  
Phone (201) 797-2718  
Toll Free Phone (800) 631-0347  
Email [sales@totalcomp.com](mailto:sales@totalcomp.com)  
Website [www.totalcomp.com](http://www.totalcomp.com)