

TSB

Shear beam load cell



Totalcomp
TSB (Nickel Plated)
TSB-SS (Stainless Steel)

Top Quality, Low Profile Performer from Totalcomp

- *NTEP Approved*
- *Environmentally protected with waterproof seal*
- *Stainless steel or Nickel plated finish*
- *Reliable - durable precise*
- *Capacities from 250 lb to 20,000 lb*
- *Includes 20 ft 4 cond cable*

 **Totalcomp** Scales & Components

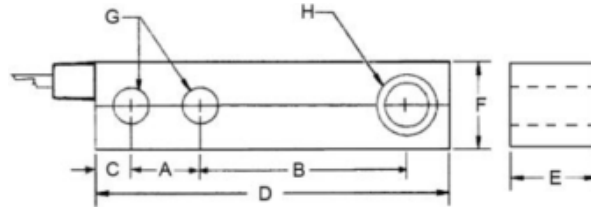
13-01 Pollitt Drive Ext, Fair Lawn NJ 07410
Phone 201-797-2718 Fax 201-797-2287

email: sales@totalcomp.com

Specifications

TSB

The Totalcomp Shear Beam (TSB) Load Cells are interchangeable with Sensortronics and Revere 65023, 5123, 9123. They are built to meet or exceed all manufacturers specs for this type of cell. They are constructed from nickel plated or stainless steel for washability and protection from harsh environments.



| Part Number <i>Nickel plated</i> | Part Number <i>Stainless steel</i> | Capacity | Weight | A | B | C | D | E | F | G | H |
|-------------------------------------|---------------------------------------|-----------|--------|------|------|------|------|------|------|------|--------|
| TSB-250 * | TSB-250-SS * | 250 lb | 3 lb | 1.00 | 3.00 | 0.60 | 5.12 | 1.00 | 1.25 | 0.53 | 1/2-20 |
| TSB-500 * | TSB-500-SS * | 500 lb | 3 lb | 1.00 | 3.00 | 0.60 | 5.12 | 1.00 | 1.25 | 0.53 | 1/2-20 |
| TSB-1K | TSB-1K-SS | 1,000 lb | 3 lb | 1.00 | 3.00 | 0.60 | 5.12 | 1.25 | 1.25 | 0.53 | 1/2-20 |
| TSB-1.5K | TSB-1.5K-SS | 1,500 lb | 3 lb | 1.00 | 3.00 | 0.60 | 5.12 | 1.25 | 1.25 | 0.53 | 1/2-20 |
| TSB-2K | TSB-2K-SS | 2,000 lb | 3 lb | 1.00 | 3.00 | 0.60 | 5.12 | 1.25 | 1.25 | 0.53 | 1/2-20 |
| TSB-2.5K | TSB-2.5K-SS | 2,500 lb | 3 lb | 1.00 | 3.00 | 0.60 | 5.12 | 1.25 | 1.25 | 0.53 | 1/2-20 |
| TSB-4K | TSB-4K-SS | 4,000 lb | 3 lb | 1.00 | 3.00 | 0.60 | 5.12 | 1.25 | 1.25 | 0.53 | 1/2-20 |
| TSB-5K-SE | TSB-5K-SE-SS | 5,000 lb | 3 lb | 1.00 | 3.00 | 0.60 | 5.12 | 1.25 | 1.25 | 0.53 | 1/2-20 |
| TSB-5K | TSB-5K-SS | 5,000 lb | 5 lb | 1.50 | 3.75 | 0.75 | 6.75 | 1.50 | 1.50 | 0.78 | 3/4-16 |
| TSB-10K | TSB-10K-SS | 10,000 lb | 5 lb | 1.50 | 3.75 | 0.75 | 6.75 | 1.50 | 1.50 | 0.78 | 3/4-16 |
| TSB-15K * | TSB-15K-SS * | 15,000 lb | 9 lb | 2.00 | 4.88 | 1.00 | 8.75 | 2.00 | 2.00 | 1.03 | 1"-14 |
| TSB-20K * | TSB-20K-SS * | 20,000 lb | 9 lb | 2.00 | 4.88 | 1.00 | 8.75 | 2.00 | 2.00 | 1.03 | 1"-14 |

* Not NTEP

Performance

| | |
|--------------------|-----------|
| Full Scale Output | 3.00 mv/v |
| Combined error | 0.25% FS |
| Nonlinearity | 0.03% FS |
| Hysteresis | 0.05% FS |
| Creep in 20 min | 0.03% FS |
| Non-Repeatability | 0.01% FS |
| Zero Balance | 1.0% FS |
| Overload, Safe | 150% FS |
| Overload, Ultimate | 300% FS |

Electrical

| | |
|-----------------------|------------------|
| Bridge Resistance | |
| Input | 350 ohms |
| Output | 350 ohms |
| Excitation Voltage | 10VDC(15VDC Max) |
| Insulation Resistance | 10KMohms@50VDC |

Temperature

| | |
|-----------------------------|------------------------|
| Compensated Range | -10 deg C to +40 deg C |
| Temperature Operating Range | |

-16 deg C to +65 deg C

| | |
|------------------------|-------------------|
| Effect on Zero Balance | 0.0013% FS/ deg C |
| Effect on FS Output | 0.0007% FS/ deg C |

Mechanical

| | |
|----------|-------------------------------|
| Material | Tool Steel Stainless steel |
| Finish | Nickel plated Polished SS |
| Sealing | IP67 |

Wiring

| | |
|---------------------|----------------------|
| Cable length & Type | 20 foot, 4 conductor |
|---------------------|----------------------|

Cable Color Code

| | |
|--------------|-------|
| + Excitation | Red |
| - Excitation | Black |
| + Output | Green |
| - Output | White |
| Shield | Bare |

Totalcomp Limited Warranty

Totalcomp warrants this product to be free of defects in materials and/or workmanship and suitable for the purpose intended as outlined in this sheet. This warranty is effective and shall cover the purchaser for one year from the date of shipment from our plant. If this product is found to be defective by our inspection in accordance with the above listed criteria, we will replace or repair it at our expense. For warranty service, please obtain a return authorization number from us and return the item, shipping prepaid, with a written description of the problem. We will respond promptly with the results of our evaluation.

 **Totalcomp** Scales & Components

13-01 Pollitt Drive Ext, Fair Lawn NJ 07410

Phone 201-797-2718 Fax 201-797-2287 email: sales@totalcomp.com