

SINGLE POINT 1260S

Aluminum, Environmentally Sealed, NTEP Certified 1:10,000 Class III Single Cell, IP66



APPROVALS



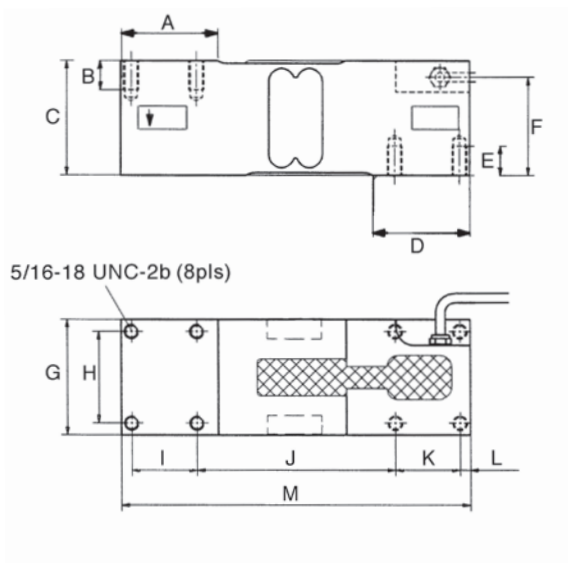
Dimensions

Picture is a representation of actual product

Rated Capacity	A	B	C	D	E	F	G	H	I	J	K	L	M
kg/mm													
75-635	52.0	16.0	62.3	52.0	16.0	52.3	63.0	50.0	35.0	107.0	35.0	5.5	188.0

Order Information

Load Rating	Part #	Est. Weight	Price
75 kg	76395	5 lb	Consult
100 kg	76396	5 lb	Consult
150 kg	76397	5 lb	Consult
200 kg	76398	5 lb	Consult
250 kg	76399	5 lb	Consult
300 kg	76400	5 lb	Consult
500 kg	76401	5 lb	Consult
635 kg	76402	5 lb	Consult



Interchangeable Products

RICE LAKE WEIGHING SYSTEMS	
RL1260	page 201
RICE LAKE WEIGHING SYSTEMS	
RL26018A	page 203
VPG® TEDEA-HUNTLEIGH	
1260	page 355

Specifications

Full Scale Output:

2.0 mV/V

Output Resistance:

350 (± 3) ohms

Input Resistance:

415 (± 15) ohms

Material/Finish:

Anodized aluminum

Temperature:

Compensated range

14°F to 104°F (-10°C to 40°C)

Operating range

0° F to 150° F (-18° C to 65° C)

Seal Type:

Environmentally sealed, IP66

Safe Overload:

150% of full scale at center loading point

Rated Excitation:

5- 10 VDC (15 V maximum)

Combined Error:

0.02% full scale

Insulation Resistance:

2,000 megohms

Cable Length:

10 ft

Cable Diameter:

0.220 in polyurethane jacket

Cable Color Code:

Green + Excitation

Black - Excitation

Red + Signal

White - Signal

Blue + Sense

Brown - Sense

Max Platform Size:

24 in x 24 in

Warranty:

One-year limited warranty

Approvals:

cFMus

NTEP