

DESCRIPTION

The WM-VI Series Mounting Assemblies bolt securely to the supporting beams of a weigh vessel or platform. The assemblies are self checking and require no check rods. These mounting assemblies assure true transmission of the vertical force components to the load cell. The WM-VI accepts nonparallel mating surfaces up to two degrees. In addition, the assemblies are designed to withstand lateral loading up to 20% of the load cell capacity. The WM-VI series mounting assemblies are designed for use with our 90210 and 90310 load cells. Available in both mild steel and stainless steel construction.

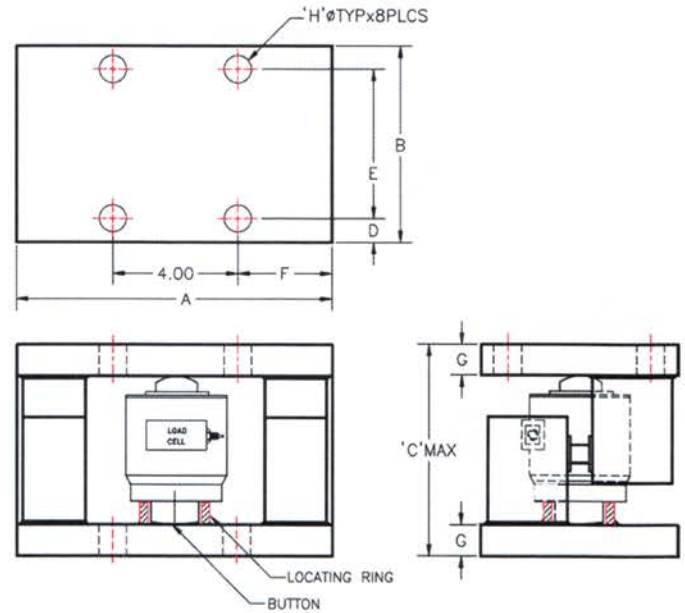
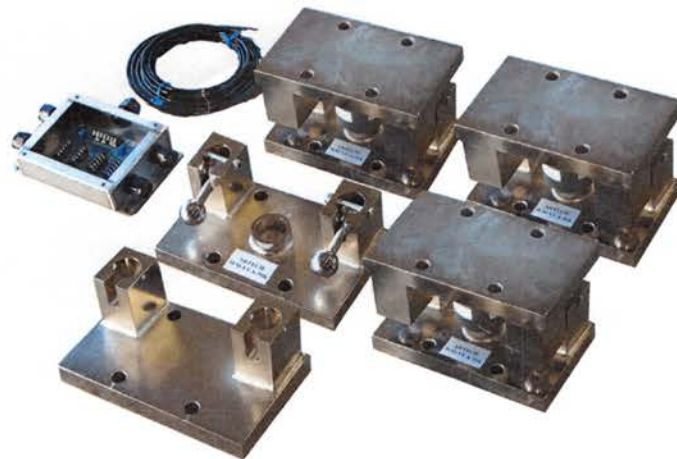
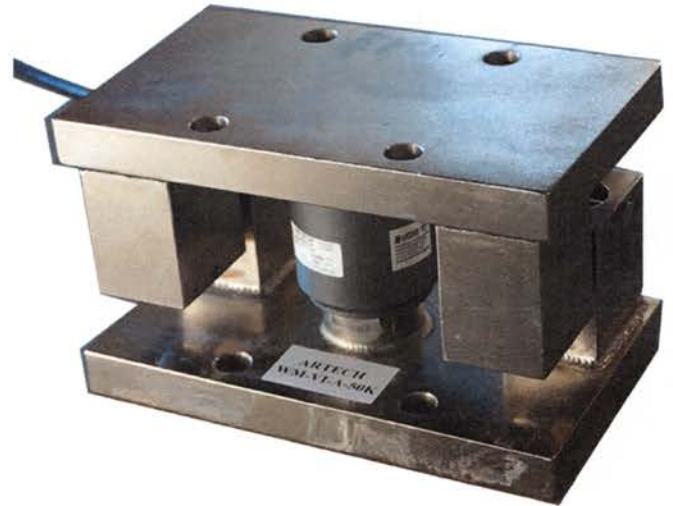
FEATURES

- Ideally Suited for Both Indoor and Outdoor Applications
- Self-Centering
- Self-Checking, Thus Eliminating Check-Rods
- Self Contained
- 10K to 500K Capacities

APPLICATIONS

- Conveyors
- Light to Heavy Capacity Tanks and Hoppers
- Mixing, Batching, and Blending
- Truck Scales

*LOADCELL AND MOUNTS ALSO AVAILABLE IN **STAINLESS STEEL** FOR FOOD INDUSTRY REQUIREMENTS AND PHARMACEUTICAL APPLICATIONS.



IMPROVED DESIGN FOR EASIER ON-SITE APPLICATION

KIT ORDERING INFORMATION		
MODULE	CAPACITY	LOAD CELL USED
WM-VI-KT3-XXX	10K-500K	90210/90310
WM-VI-KT4-XXX	10K-500K	90210/90310
SSWM-VI-KT3-XXX	10K-500K	SS90210/SS90310
SSWM-VI-KT4-XXX	10K-500K	SS90210/SS90310

CAPACITY	MODEL NO	LOAD CELL USED	A	B	C MAX	D	E	F	G	HDIA
10K-50K	WMVI-A	90210/90310	10.00	6.00	6.15	0.75	4.50	3.00	1.00	0.69
100K	WMVI-B	90210/90310	11.00	8.00	9.00	1.00	6.00	3.50	1.50	0.82
200K	WMVI-C	90210/90310	13.00	10.00	12.20	1.00	8.00	4.50	2.00	1.12
300K	WMVI-D	90210/90310	14.00	10.00	12.20	1.00	8.00	5.00	2.00	1.12
500K	WMVI-E	90210/90310	18.00	11.00	15.50	1.00	9.00	7.00	2.50	1.12

Note: All Dimensions are in Inches



1966 Keats Drive, Riverside, CA 92501
 (951) 276-3331
 (800) 654-8181
 Fax: (951) 276-4556
 Email: info@artechindustriesinc.com
 www.artechindustriesinc.com

