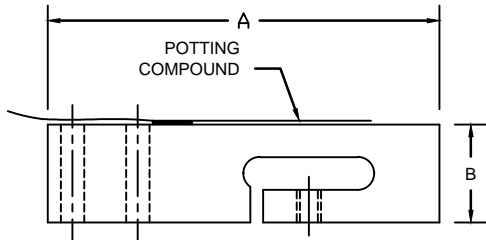
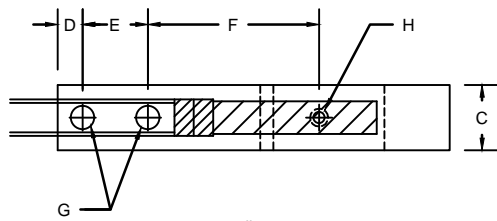


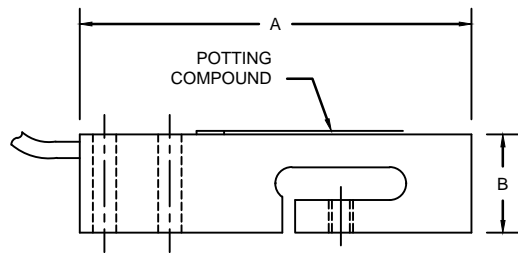
REVISIONS							
ZONE	LTR.	DESCRIPTION	DATE	ECN	BY	CKD	APVD
-	-	INITIAL RELEASE	10/01/08	-	-	-	-
-	B	REDRAWN FOR LABELING CONSISTENCY	12/15/15	2016-53	TB	AB	AA



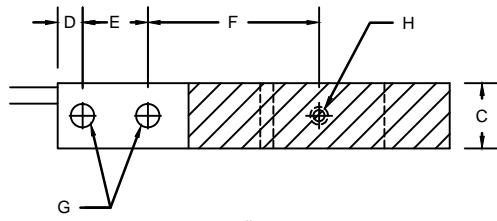
125lb



125lb



250lb



250lb

PERFORMANCE SPECIFICATIONS:

- CAPACITIES: 125LB & 250LB
- RATED OUTPUT: 2.00 mV/V ±10%
- SAFE OVERLOAD: 150% FS
- EXCITATION VOLTAGE: 10-20V AC/DC
- INPUT RESISTANCE: 385 ±10 OHMS
- OUTPUT RESISTANCE: 350 ±3 OHMS
- ZERO BALANCE: ±1.00% FS
- SEAL TYPE: ENVIRONMENTALLY SEALED, IP67
- NON-LINEARITY: ±0.03% FS
- HYSTERESIS: ±0.02% FS
- REPEATABILITY: ±0.02% FS
- CREEP: ±0.03% FS
- COMPENSATED TEMPERATURE RANGE: -10°C - +40°C
- TEMPERATURE EFFECT ON ZERO: ±0.02%FS/°C
- TEMPERATURE EFFECT ON OUTPUT: ±0.001%FS/°C
- INSULATION RESISTANCE: >5000 MEGOHMS
- LOAD CELL CABLE: 4 CONDUCTOR, 10 FT
- LOAD CELL WIRING:
 - GREEN +EXC
 - BLACK -EXC
 - WHITE +SIG
 - RED -SIG
 - BRAID/YELLOW: SHIELD
- FM APPROVED

RATED CAPACITY	DIMENSIONS								
	A	B	C	D	E	F	G	H	
125LB	3.00	0.75	0.50	0.19	0.50	1.31	0.18	8-32UNF	
200LB-250LB	3.00	0.85	0.75	0.19	0.50	1.31	0.18	10-32UNF	

'DO NOT ALTER WITHOUT AGENCY NOTIFICATION'

COTI GLOBAL SENSORS, INC.

CG-FB SINGLE POINT LOAD CELL

<p>THIS DRAWING USES THIRD ANGLE PROJECTION</p>	<p>TOLERANCES UNLESS OTHERWISE SPECIFIED</p> <p>XX±.01</p> <p>.XXX±.005</p> <p>FRACTIONS±1/16"</p> <p>ANGLES: ±1/2°</p>	APPROVALS	DATE
		DRAWN: MTSI	10/01/08
		CHECKED: MB	10/01/08
		ENGINEER: AA	10/01/08
APPROVED: AA	10/01/08	MATERIAL	
		ALUMINUM	

SCALE	SIZE	PART/DRAWING NO.	REV.
NONE	B	DOD-CG-FB	B
MODEL CG-FB			SHEET 1 OF 1

THIS DOCUMENT CONTAINS PROPRIETARY INFORMATION AND SUCH INFORMATION MAY NOT BE REPRODUCED OR DISCLOSED FOR ANY PURPOSE OR USED TO PRODUCE THE ARTICLE OR SUBJECT WITHOUT WRITTEN PERMISSION FROM COTI GLOBAL SENSORS, INC.