

GSFK

FLOOR SCALE KITS



**General Sensor
GSFK**

Economically Priced Floor Scale Kits Include GSB Load Cells, RBF Beam Feet, GS-JB-4-SS Summing Junction Box and a Standard Load Cell Cable

- ✓ *The GSB General Sensor load cells are nickel plated steel.*
- ✓ *The 20 ft. 6 cond. cable is a standard cable and is easy to install.*
- ✓ *GSB is interchangeable with Sensortronics 65023 and RTI 5123.*
- ✓ *The GS-JB-4-SS compact summing junction box is made of stainless steel.*
- ✓ *The RBF rigid rubber foot beam contains a steel insert for no pivoting and no rotation.*
- ✓ *GS-JB-4-SS includes five nylon strain reliefs for load cells and cables.*



Totalcomp[®] Scales & Components

99 Reagent Lane • Fair Lawn, New Jersey 07410

Fax: 201-797-2287 • Toll Free Fax: 888-797-2288 • Phone: 201-797-2718 • Toll Free Phone: 800-631-0347

Email: sales@totalcomp.com • Website: www.totalcomp.com

GENERAL SENSOR GSFK FLOOR SCALE KIT

The General Sensor GSFK Floor Scale Kit is economically priced and includes four nickel plated steel, NTEP approved GSB single ended beam load cells, four rigid rubber beam feet, one stainless steel GS-JB-4-SS summing junction box and one twenty foot six conductor cable.

Part Number	Cell Cap	Base Cap	Weight
GSFK-250*	250 lb	500 lb	17 lb
GSFK-500*	500 lb	1,000 lb	17 lb
GSFK-1K	1,000 lb	2,000 lb	17 lb
GSFK-1.5K	1,500 lb	3,000 lb	17 lb
GSFK-2K	2,000 lb	4,000 lb	17 lb
GSFK-2.5K	2,500 lb	5,000 lb	17 lb
GSFK-4K	4,000 lb	8,000 lb	17 lb
GSFK-5KSE	5,000 lb	10,000 lb	17 lb
GSFK-5K	5,000 lb	10,000 lb	28 lb
GSFK-10K	10,000 lb	20,000 lb	28 lb

*Not NTEP

Summing/Junction PC Cards	
All Resistors Metal Film type	
Tolerance +/- 1%	Temperature Range -55 C to + 125 degrees C
Wattage 0.25 watt at +70 degrees C	Temperature Coefficient +/- 50 ppm per degree C
<i>All trimming potentiometers are 25-turn, environmentally sealed, cermet element type.</i>	
Wattage 0.5 watt at + 70 degrees C	Temperature Coefficient +/- 100 ppm per degree C
Tolerance +/-10%	Temperature Range - 55 C to + 125 degrees C

RBF Rigid Rubber Beam Feet			
Part Number	Min Ht	Max Ht	Pad
1/2-20x2-1/2	1"	3"	2-1/2" dia
3/4-16x3	1"	3"	3" dia

20 Foot 6 Conductor Cable	
Wire	90% Tinned Copper Braid Shield
Insulation	Polyethylene
Outside	Stainless Steel
Jacket	Black Polyurethane
OD	0.295 inches

GSB Nickel Plated Rectangular Beam Load Cell

Performance

Full Scale Output
3.0 mv/v \pm 0.25%

Combined Error
 \pm 0.03% FS

Nonlinearity
 \pm 0.03% FS

Hysteresis
 \pm 0.03% FS

Creep
 \pm 0.02% FS in 1 hour

Non-Repeatability
 \pm 0.01% FS

Zero Balance

\pm 1.0% FS

Overload Safe

150% FS

Overload Ultimate

300% FS

Electrical

Bridge Resistance

Input 420 ohms \pm 10%

Output 350 ohms \pm 3 ohms

Excitation Voltage

10VDC (15VDC Max)

Insulation Resistance

10KMohms@50VDC

Temperature

Compensated Range

-10°C to +40°C

Operating Range

15°F to +150°F

Effect on Zero Balance

0.0013% FS/deg F

Effect on FS Output

0.0007% FS/deg F

Mechanical

Material

Electroless
Nickel Plated

Sealing

IP67

TOTALCOMP LIMITED WARRANTY

Totalcomp warrants this product to be free of defects in materials and/or workmanship and suitable for the purpose(s) intended as outlined on this sheet. This warranty is effective and shall cover the purchaser for one year from the date of shipment from our plant. If this product is found to be defective by our inspection in accordance with the above listed criteria, we will replace or repair it at our expense. For warranty service, please obtain a return authorization number from us and return the item, shipping prepaid, with a written description of the problem. We will respond promptly with the results of our evaluation.

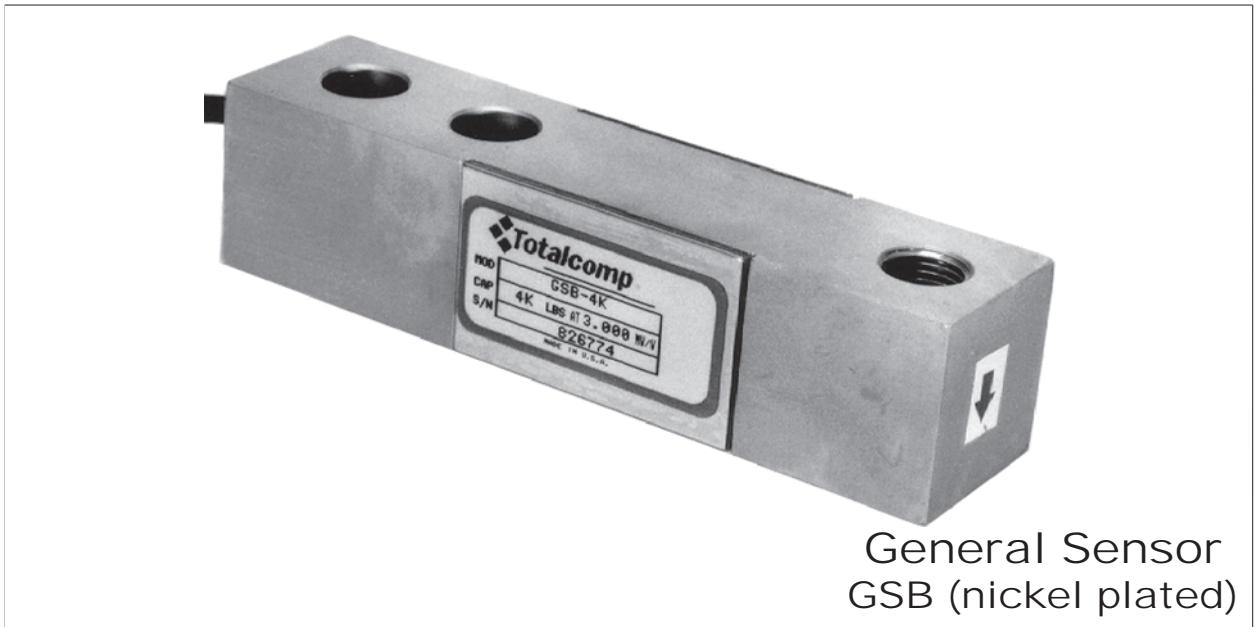


Totalcomp[®]

Scales & Components

99 Reagent Lane
Fair Lawn, NJ 07410
Fax (201) 797-2287
Toll Free Fax (888) 797-2288
Phone (201) 797-2718
Toll Free Phone (800) 631-0347
Email sales@totalcomp.com
Website www.totalcomp.com

GSB

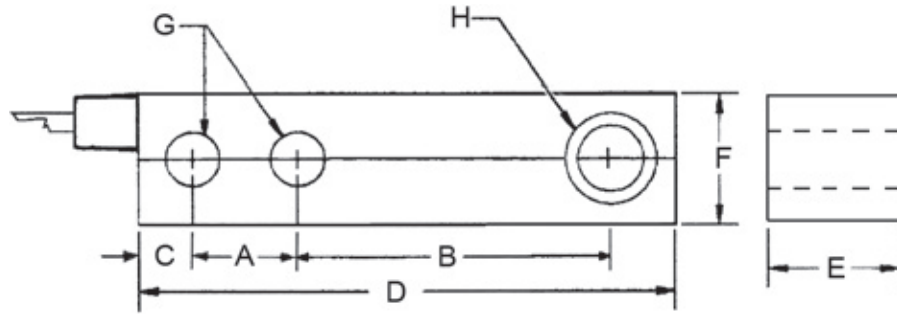


General Sensor's Rectangular Beam Load Cell is Perfect for Rugged Environments

- ✓ *Environmentally protected with waterproof seal.*
- ✓ *Reliable-Durable-Precise.*
- ✓ *Electroless nickel plated tool steel construction.*
- ✓ *Available in capacities from 250 - 20K lb.*
- ✓ *Unique overload protection.*



Totalcomp[®] Scales & Components



GSB

Nickel Plated Rectangular Beam Load Cell

Part Number	Capacity	Weight	A	B	C	D	E	F	G	H
GSB-250*	250 lb	3 lb	1.00	3.00	0.60	5.12	1.00	1.00	0.53	1/2-20
GSB-500*	500 lb	3 lb	1.00	3.00	0.60	5.12	1.25	1.25	0.53	1/2-20
GSB-1K	1,000 lb	3 lb	1.00	3.00	0.60	5.12	1.25	1.25	0.53	1/2-20
						5.12				
GSB-1.5K	1,500 lb	3 lb	1.00	3.00	0.60		1.25	1.25	0.53	1/2-20
GSB-2K	2,000 lb	3 lb	1.00	3.00	0.60	5.12	1.25	1.25	0.53	1/2-20
GSB-2.5K	2,500 lb	3 lb	1.00	3.00	0.60	5.12	1.25	1.25	0.53	1/2-20
						5.12				
GSB-4K	4,000 lb	3 lb	1.00	3.00	0.60		1.25	1.25	0.53	1/2-20
GSB-5K-SE	5,000 lb	3 lb	1.00	3.00	0.60	5.12	1.25	1.25	0.53	1/2-20
GSB-5K	5,000 lb	5 lb	1.50	3.75	0.75	6.75	1.50	1.50	0.78	3/416
GSB-10K	10,000 lb	5 lb	1.50	3.75	0.75	6.75	1.50	1.50	0.78	3/416
GSB-15K*	15,000 lb	9 lb	2.00	4.88	1.00	8.75	2.00	2.00	1.03	1-14
GSB-20K*	20,000 lb	9 lb	2.00	4.88	1.00	8.75	2.00	2.00	1.03	1-14
Larger envelope w/ 1-1/4" height rather than 1" for 100 lb – 500 lb										
GSB-100-L*	100 lb	3 lb	1.00	3.00	0.60	5.12	1.25	1.25	0.53	1/2-20
GSB-250-L*	250 lb	3 lb	1.00	3.00	0.60	5.12	1.25	1.25	0.53	1/2-20
GSB-500-L*	500 lb	3 lb	1.00	3.00	0.60	5.12	1.25	1.25	0.53	1/2-20

*Not NTEP

Performance

Full Scale Output

3.0 mv/v \pm 0.25%

Combined Error

\pm 0.03% FS

Nonlinearity

\pm 0.03% FS

Hysteresis

\pm 0.03% FS

Creep

\pm 0.02% FS in 1 hour

Non-Repeatability

\pm 0.01% FS

Zero Balance

\pm 1.0% FS

Overload Safe

150% FS

Overload Ultimate

300% FS

Electrical

Bridge Resistance

Input 420 ohms \pm 10%

Output 350 ohms \pm 3 ohms

Excitation Voltage

10VDC (15VDC Max)

Insulation Resistance

10KMohms@50VDC

Temperature

Compensated Range

-10°C to +40°C

Operating Range

15°F to +150°F

Effect on Zero Balance

0.0013% FS/deg F

Effect on FS Output

0.0007% FS/deg F

Mechanical

Material

Electroless
Nickel Plated

Sealing

IP67

Wiring

Cable Length & Type

20 foot, 4 conductor

Cable Color Code

+ Excitation.....Red
- Excitation.....Black
+ Output.....Green
- Output.....White
Shield.....Yellow

TOTALCOMP LIMITED WARRANTY

Totalcomp warrants this product to be free of defects in materials and/or workmanship and suitable for the purpose(s) intended as outlined on this sheet. This warranty is effective and shall cover the purchaser for one year from the date of shipment from our plant. If this product is found to be defective by our inspection in accordance with the above listed criteria, we will replace or repair it at our expense. For warranty service, please obtain a return authorization number from us and return the item, shipping prepaid, with a written description of the problem. We will respond promptly with the results of our evaluation.



Totalcomp[®]

Scales & Components

99 Reagent Lane

Fair Lawn, NJ 07410

Fax (201) 797-2287

Toll Free Fax (888) 797-2288

Phone (201) 797-2718

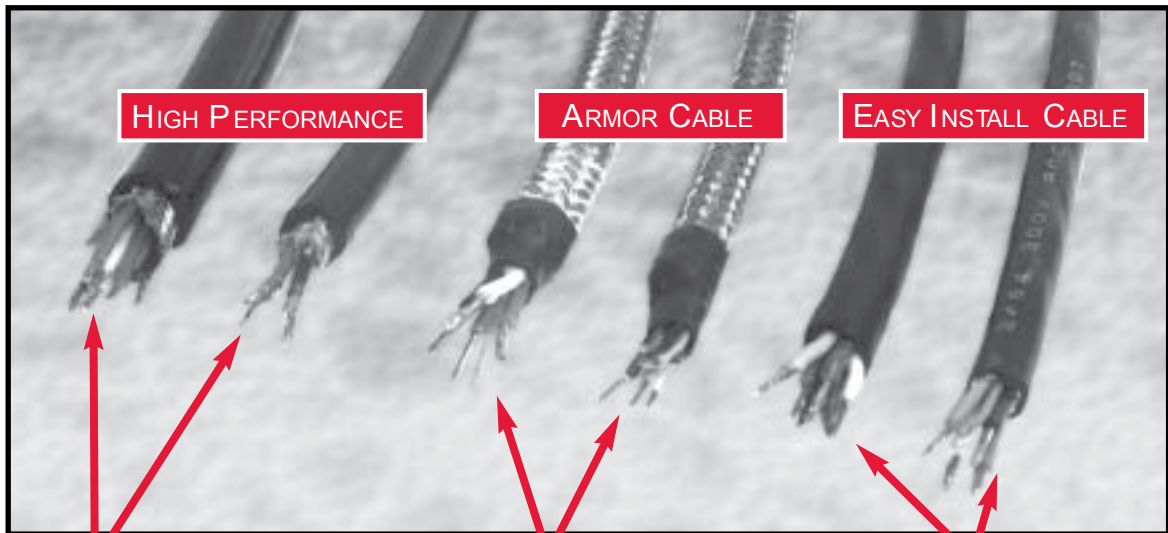
Toll Free Phone (800) 631-0347

Email sales@totalcomp.com

Website www.totalcomp.com

LOAD CELL CABLES

Top Quality Load Cell Cable by the foot or by the roll!



- ✓ **High performance abrasion resistant cables.**
- ✓ **Best insulation resistance.**
- ✓ **4 or 6 conductor 20 gage stranded tinned copper wiring.**
- ✓ **Individually teflon-insulated, nylon-wrapped conductors.**
- ✓ **Tinned copper sheilding with abrasion-resistant polyurethane jacket.**

- ✓ **Abrasion resistant tinned copper braid shielding.**
- ✓ **4 or 6 conductor.**
- ✓ **20 or 24 gage (AWG) stranded tinned copper wiring with vinyl insulation.**
- ✓ **Stainless steel braided armor outside.**

- ✓ **Standard cable - easy installation.**
- ✓ **4 or 6 conductor.**
- ✓ **Aluminum shield w/drain wire provides 100% shield coverage.**
- ✓ **20 gage (AWG) stranded tinned copper wiring with vinyl insulation.**



Totalcomp[®] Scales & Components

SPECIFICATIONS

HIGH PERFORMANCE

STOCK #	DESCRIPTION
4 Conductor cable	
1904	1 - 499 feet
1905	500 ft. roll
1906	1000 ft. roll
6 Conductor cable	
1907	1 - 499 feet
1908	500 ft. roll
1909	1000 ft. roll

ARMOR

STOCK #	DESCRIPTION
4 Conductor cable	
1073	1 - 499 feet
1074	500 ft. roll
6 Conductor cable	
1665	1 - 499 feet
1666	500 ft. roll

EASY INSTALL

STOCK #	DESCRIPTION
4 Conductor cable	
190	1 - 499 feet
241	500 ft. roll
242	1000 ft. roll
6 Conductor cable	
191	1 - 499 feet
244	500 ft. roll
245	1000 ft. roll

<i>Cables are available in 20 or 24 gage 4 or 6 cond, or 24 gage 6 cond.</i>			
	4 Cond. -20 gage	4 Cond.-24 gage	6 Cond. -24 gage
Wire	90% Tinned Copper Braid Shield	90% Tinned Copper Braid Shield	90% Tinned Copper Braid Shield
Insulation	Polyethylene	PVC-nylon	PVC
Outside	Stainless Steel	Stainless Steel	Stainless Steel
Jacket	Black Polyurethane	Grey Polyurethane	Grey PVC
OD	0.295 inches	0.190 inches	0.220 inchcs
Lengths	specify	specify	specify

TOTALCOMP LIMITED WARRANTY

Totalcomp warrants this product to be free of defects in materials and/or workmanship and suitable for the purpose(s) intended as outlined on this sheet. This warranty is effective and shall cover the purchaser for one year from the date of shipment from our plant. If this product is found to be defective by our inspection in accordance with the above listed criteria, we will replace or repair it at our expense. For warranty service, please obtain a return authorization number from us and return the item, shipping prepaid, with a written description of the problem. We will respond promptly with the results of our evaluation.



Totalcomp®

Scales & Components

99 Reagent Lane
Fair Lawn, NJ 07410
Fax (201) 797-2287
Toll Free Fax (888) 797-2288
Phone (201) 797-2718
Toll Free Phone (800) 631-0347
Email sales@totalcomp.com
Website www.totalcomp.com

**CBBF
RBF**

MOUNTING



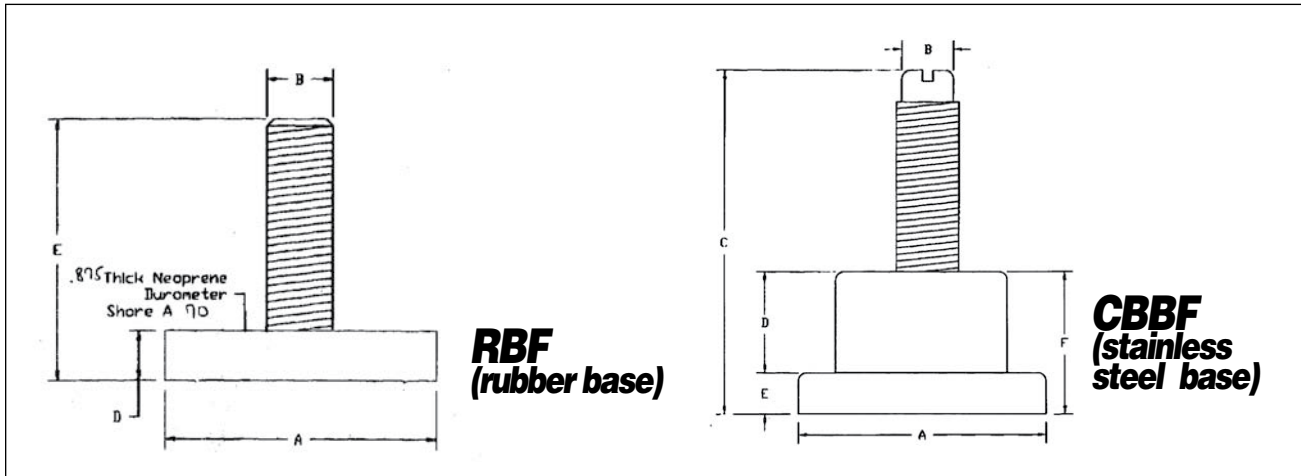
**Superior quality beam feet
from Totalcomp.**

- ✓ Available in up to 3" footprint.
- ✓ Stainless steel or chemical resistant rubber base.
- ✓ Washdown safe.
- ✓ Machined stainless steel construction.
- ✓ Made to endure the harshest of industrial environments.
- ✓ Captive ball bearing allows for 10° swivel (CBBF only)



Totalcomp[®] Scales & Components

99 Reagent Lane • Fair Lawn, New Jersey 07410
Fax: 201-797-2287 • Toll Free Fax: 888-797-2288 • Phone: 201-797-2718 • Toll Free Phone: 800-631-0347
Email: sales@totalcomp.com • Website: www.totalcomp.com



RBF & CBBF BEAM FEET

These high quality beam feet from Totalcomp are machined from solid steel for unsurpassed durability and performance. Manufactured specifically for use in harsh environments, these beam feet are designed to survive the harsh cleaning requirements of the food and chemical industries.

The RBF model has a base constructed of DeltaFlex 7000, a material known for its excellent resistance to most incidental chemical contact situations - with the exception of total immersion.

The CBBF model has a stainless steel structure with a captured ball-bearing design - made to provide superior high weighing accuracy and up to a 10° swivel.

MODEL	MIN HT	MAX HT	A	B	C	D	E	F
RBF1/2-20x1-7/8	1"	1 7/8"	1 7/8"	1/2 - 20		7/8"	3"	
RBF1/2-20x2-1/2	1"	2 1/2"	2 1/2"	1/2 - 20		7/8"	3"	
RBF1/2-20-3	1"	3"	3"	1/2 - 20		7/8"	3"	
CBBF-1/2-20	1 3/4"	3"	2 1/2"	1/2-20	3.375"	.680"	.376"	1.055"
CBBF-3/4-16	2 1/2"	4 1/4"	3"	3/4-16	4.250"	1.050"	.50"	1.550"
CBBF-1-14	2 1/2"	4 1/4"	3"	1-14	4.500"	.875"	.375"	1.550"
CBBF-1-12	2 1/2"	4 1/4"	3"	1-12	4.500"	.875"	.375"	1.550"

TOTALCOMP LIMITED WARRANTY

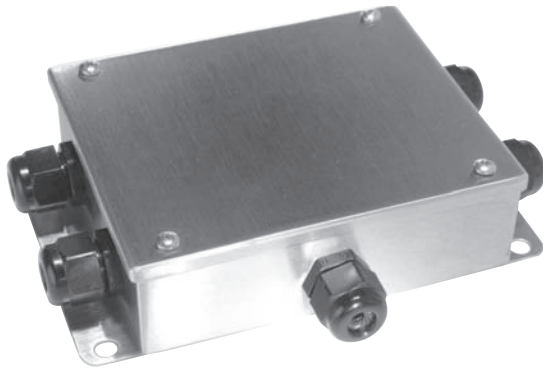
Totalcomp warrants these products to be free of defects in materials and/or workmanship and suitable for the purpose(s) intended as outlined on this sheet. This warranty is effective and shall cover the purchaser for one year from the date of shipment from our plant. If these products are found to be defective by our inspection in accordance with the above listed criteria, we will replace or repair it at our expense. For warranty service, please obtain a return authorization number from us and return the item, shipping prepaid, with a written description of the problem. We will respond promptly with the results of our evaluation.



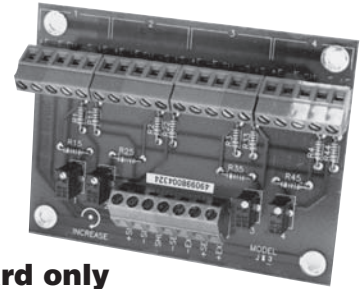
Scales & Components

99 Reagent Lane
 Fair Lawn, NJ 07410
 Fax (201) 797-2287
 Toll Free Fax (888) 797-2288
 Phone (201) 797-2718
 Toll Free Phone (800) 631-0347
 Email sales@totalcomp.com
 Website www.totalcomp.com

SUMMING BOX



GS-JB-4-SS



GS-SC card only



GS-JB-4-FRP

Corrosion resistant compact summing junction boxes.

- ✓ **Superior corrosion resistance.**
- ✓ **Stainless Steel or fiberglass reinforced plastic housing.**
- ✓ **Reliable - Durable - Precise.**
- ✓ **5 nylon strain reliefs are included for load cell & cables.**



Totalcomp[®] Scales & Components

99 Reagent Lane • Fair Lawn, New Jersey 07410
Fax: 201-797-2287 • Toll Free Fax: 888-797-2288 • Phone: 201-797-2718 • Toll Free Phone: 800-631-0347
Email: sales@totalcomp.com • Website: www.totalcomp.com

SPECIFICATIONS

SUMMING JUNCTION BOXES. General Sensor compact summing junction boxes.

Totalcomp's extremely small junction boxes with signal trim for 4 load cells. One multiturn potentiometer per load cell that shunts the output and two series output isolation resistors that limit zero interaction. Screw terminals simplify wire connection. Accepts wire size 26 to 14 AWF. Five nylon strain reliefs are included for load cells & instrument cables. Both boxes are NEMA 4X and gasketed for corrosion resistance. The GS-JB-4-SS is made of stainless steel and the GS-JB-FRP is made of fiberglass reinforced plastic. The small size of these boxes make them a good replacement for low profile warehouse scales. In many cases the box will fit under the platform 7" x 4.625" x 1.75" h.

Summing/Junction PC cards

All resistors
Metal Film type
Wattage
1/4 watt

Tolerance
+/- 1%
Temperature Coefficient
+/- 50 ppm per degree C

Temperature Range
- 55 C to + 125 degrees C

All trimming potentiometers are 25-turn, environmentally sealed, cermet element type.

Wattage
0.5 watt at + 70 degrees C
Tolerance
+/- 10%

Temperature Coefficient
+/- 100 ppm per degree C
Temperature Range
- 55 C to + 125 degrees C

Terminal Blocks are screw-type cage clamp design rated at 300v 10 amps. All PCBs are coated with transparent conformal coating. Cured coatings are hydrolytically stable and retain physical and electrical properties during and after high temperature humidity exposure.

- Meets mil-1-460580 type SR
- Dielectric strength 1100 volts/mil
- Withstand severe environmental stress
- Mold and fungus-resistance
- UV detectable for QC inspection
- UL listed

GS- SC Load Cell Summing Card

This summing card measures 3 x 4". It has four 5-position terminal strips for load cell inputs and one 7-position terminal strip with internally jumped sense terminals for output to the instrument. Terminal strips are lever-type design.

Calibration

After wiring is complete and the scale instrument is on, turn each of the four trim pots fully clockwise to obtain the highest output from each load cell. Check the scale for repeatability and correct any mechanical problems.

I. Shift adjustment:

- Place a test weight over each of the load cells and record the lowest reading and its location. This reading will be used as your target weight.
- Place the test weight over each of the other load cells and adjust the corresponding trim pot to match the target weight.
- Place the test weight over the cell located in step (a). Record this weight as the new target and repeat steps (b & c) until all cells are matched to within the desired tolerance.

II. Span Adjustment

- Calibrate the digital weight indicator using the instrument calibration instructions supplied by the manufacturer.

TOTALCOMP LIMITED WARRANTY

Totalcomp warrants this product to be free of defects in materials and/or workmanship and suitable for the purpose(s) intended as outlined on this sheet. This warranty is effective and shall cover the purchaser for one year from the date of shipment from our plant. If this product is found to be defective by our inspection in accordance with the above listed criteria, we will replace or repair it at our expense. For warranty service, please obtain a return authorization number from us and return the item, shipping prepaid, with a written description of the problem. We will respond promptly with the results of our evaluation.



Totalcomp®

Scales & Components

99 Reagent Lane
Fair Lawn, NJ 07410
Fax (201) 797-2287
Toll Free Fax (888) 797-2288
Phone (201) 797-2718
Toll Free Phone (800) 631-0347
Email sales@totalcomp.com
Website www.totalcomp.com