

Model IDS608

SDS LOAD CELL

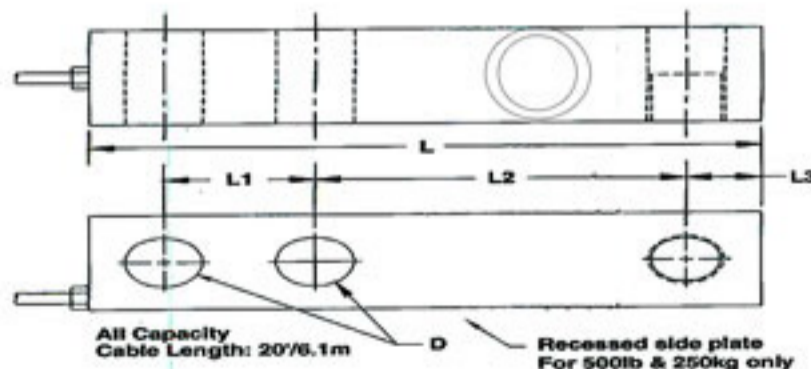


Specification

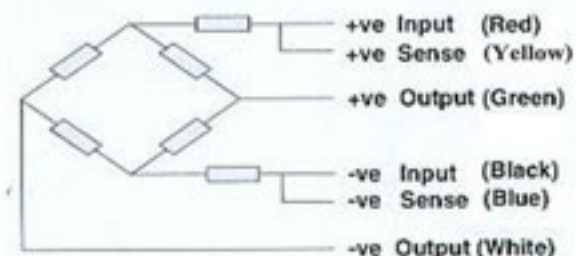
Capacity	t	0.15/ 0.25/ 0.5/1/2/2.5/3/5/10
Accuracy class	lb	C3
Combined error	(%FS)	$\leq \pm 0.020$
Creep	(%FS/30min)	$\leq \pm 0.016$
Temperature effect on sensitivity	(%FS/10°C)	$\leq \pm 0.011$
Temperature effect on zero	(%FS/10°C)	$\leq \pm 0.015$
Output sensitivity	(mv/v)	3.0 ± 0.003
Input resistance	(Ω)	400 ± 10
Output resistance	(Ω)	352 ± 3
Insulation resistance	(M Ω)	$\geq 5000(100VDC)$
Zero balance	(%FS)	1.0
Temperature, compensated	(°C)	-10 - +40
Temperature, allowed	(°C)	-35 - +65
Excitation, Recommended	(V)	5 - 12(DC)
Excitation, Max	(V)	18(DC)
Safe overload	(%FS)	120
Ultimate overload	(%FS)	150

All specifications listed subject to change without notice.

OUTLINE DIMENSIONS



Wiring Schematic Diagram (Balanced bridge configuration)



CAPACITY		L	L1	L2	L3	W	W1	H	D	T
250kg	mm	130.0	25.4	76.2	12.7	31.7	31.7	25.4	13.5	M12 x 1.75
500lb	(inch)	5.12	1.00	3.00	0.50	1.25	1.25	1.00	0.53	1/2-20UNF
500/ 1000/ 1500/ 2000kg	mm	130.0	25.4	76.2	12.7	38.1	31.7	31.7	13.5	M12 x 1.75
1K / 2K / 2.5K / 3K / 4K / 5KSElb	(inch)	5.12	1.00	3.00	0.50	1.50	1.25	1.25	0.53	1/2-20UNF
2500/ 5000kg	mm	171.5	38.1	95.3	19.0	44.2	38.1	38.1	19.8	M20 x 1.5
5K / 10Klb	(inch)	6.75	1.50	3.75	0.75	1.74	1.50	1.50	0.78	3/4-16UNF
15K / 20Klb	mm	225.6	50.8	123.9	25.4	56.9	50.8	50.8	26.2	-----
	(inch)	8.88	2.00	4.88	1.00	2.24	2.00	2.00	1.03	1-14UNS