

TB745

Beam load cell



Hermetically sealed stainless steel beam load cells

- *Washdown safe*
- *Hermetically sealed*
- *Stainless steel construction*
- *Low profile design*
- *Capacities from 500 lb to 10,000 lb*
- *Interchangeable with Toledo for 745 mount beam cells*

 **Totalcomp** Scales & Components

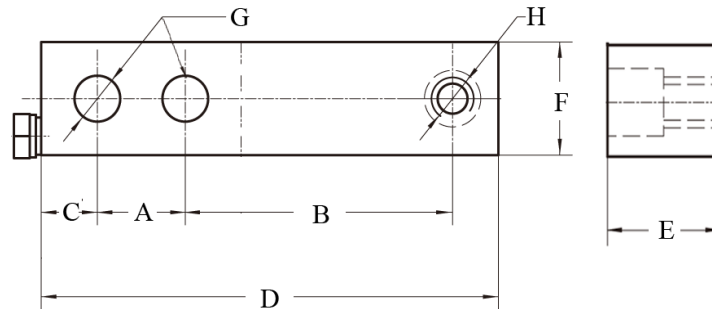
13-01 Pollitt Drive Ext, Fair Lawn NJ 07410
Phone 201-797-2718 Fax 201-797-2287

email: sales@totalcomp.com

Specifications

TB745

The Totalcomp TB745 load cells are interchangeable with Toledo beam load cells for 745 mount. They are built to meet or exceed all manufacturers specs for this type of cell. They are constructed of stainless steel for washability and protection from harsh environments.



Part Number	Capacity	Weight	Stock	A	B	C	D	E	F	G	H
TB745-500-SS	500 lb	3 lb	3072	1.00	3.00	0.60	5.12	1.00	1.25	0.53	1/2-20
TB745-1K-SS	1,000 lb	3 lb	2105	1.00	3.00	0.60	5.12	1.00	1.25	0.53	1/2-20
TB745-1.25K-SS	1,250 lb	3 lb	3073	1.00	3.00	0.60	5.12	1.25	1.25	0.53	1/2-20
TB745-2.5K-SS	2,500 lb	3 lb	3074	1.00	3.00	0.60	5.12	1.25	1.25	0.53	1/2-20
TB745-4K-SS	4,000 lb	3 lb	3075	1.00	3.00	0.60	5.12	1.25	1.25	0.53	1/2-20
TB745-5K-SS	5,000 lb	4 lb	3076	1.00	3.00	0.60	5.12	1.25	1.25	0.53	1/2-24
TB745-10K-SS	10,000 lb	6 lb	3077	1.00	3.00	0.60	5.12	1.25	1.25	0.53	1/2-20

Performance

Full Scale Output	2.00 mv/v
Combined error	0.03% FS
Nonlinearity	0.03% FS
Hysteresis	0.03% FS
Creep in 20 min	0.03% FS
Non-Repeatability	0.01% FS
Zero Balance	1.0% FS
Overload, Safe	150% FS
Overload, Ultimate	300% FS

Electrical

Bridge Resistance	
Input	350 ohms
Output	350 ohms
Excitation Voltage	10VDC(15VDC Max)
Insulation Resistance	10KMohms@50VDC

Mechanical

Material	Stainless steel
Finish	Polished SS
Sealing	IP67

Temperature

Compensated Range	-10 deg C to +40 deg C
Operating Range	-16 deg C to +65 deg C
Effect on Zero Balance	0.0013% FS/ deg C
Effect on FS Output	0.0007% FS/ deg C

Wiring

Cable length & Type	30 foot, 4 conductor
---------------------	----------------------

Cable Color Code

+ Excitation	Green
- Excitation	Black
+ Output	White
- Output	Red
Shield	Bare

Totalcomp Limited Warranty

Totalcomp warrants this product to be free of defects in materials and/or workmanship and suitable for the purpose intended as outlined in this sheet. This warranty is effective and shall cover the purchaser for one year from the date of shipment from our plant. If this product is found to be defective by our inspection in accordance with the above listed criteria, we will replace or repair it at our expense. For warranty service, please obtain a return authorization number from us and return the item, shipping prepaid, with a written description of the problem. We will respond promptly with the results of our evaluation.



Totalcomp Scales & Components

13-01 Pollitt Drive Ext, Fair Lawn NJ 07410
Phone 201-797-2718 Fax 201-797-2287

email: sales@totalcomp.com