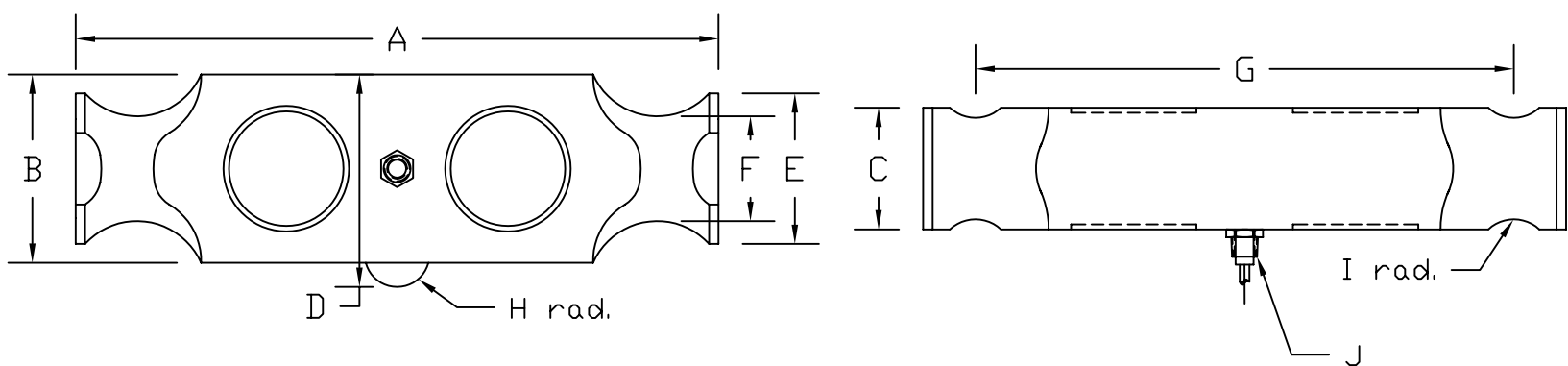


REVISIONS							
ZONE	LTR.	DESCRIPTION	DATE	ECN	BY	CKD	APVD
-	-	INITIAL RELEASE	11/03/06	-	-	-	-
-	A	EDITED VIEWS, NOTES, AND TABLE	01/10/08	096	MP	AA	WH

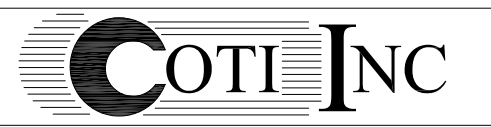


PERFORMANCE SPECIFICATIONS:

- CAPACITIES: 25K, 40K, 50KSE, 50K, 60KSE, 60K, 75KSE, 75K, 100K, & 125K LB
- RATED OUTPUT: 3.00 mV/V ±1%
- SAFE OVERLOAD: 150% FS
- EXCITATION VOLTAGE: 10-15V AC/DC
- BRIDGE RESISTANCE: 700 OHMS
- ZERO BALANCE: ±1.00% FS
- SEAL TYPE: ENVIRONMENTALLY SEALED
- NTEP RATED
- CLASS 111L, 10,000 DIVISION, MULTIPLE CELL
- COMPENSATED TEMPERATURE RANGE: -10°C - +40°C
- TEMPERATURE EFFECT ON ZERO: ±0.02%FS/10°C
- TEMPERATURE EFFECT ON OUTPUT: ±0.02%FS/10°C
- INSULATION RESISTANCE: >5000 MEGOHMS
- LOAD CELL CABLE: 4 CONDUCTOR, 50 FT (BRAIDED SHIELD)
- LOAD CELL WIRING:
 - GREEN +EXC
 - BLACK -EXC
 - WHITE +SIG
 - RED -SIG
 - BRAID/YELLOW: SHIELD

RATED CAPACITY	DIMENSIONS										
	A	B	C	D	E	F	G	H	I	J	
25K-75KSE	8.25	2.44	1.94	2.97	2.00	1.63	7.25	0.50	0.50	1/4-18NPT	
50K-75K	11.50	2.94	1.94	3.47	2.20	1.70	10.00	1.00	0.75	1/2-14NPT	
100K-125K	14.50	3.86	2.90	4.68	3.20	2.44	12.50	1.50	1.00	1/2-14NPT	

DO NOT ALTER WITHOUT AGENCY NOTIFICATION



**BE40 DOUBLE ENDED BEAM
NTEP LOAD CELL**

<p>THIS DRAWING USES THIRD ANGLE PROJECTION</p>	<p>THIS DOCUMENT CONTAINS PROPRIETARY INFORMATION AND SUCH INFORMATION MAY NOT BE REPRODUCED OR DISCLOSED FOR ANY PURPOSE OR USED TO PRODUCE THE ARTICLE OR SUBJECT WITHOUT WRITTEN PERMISSION FROM COTI, INC.</p>	<p>TOLERANCES UNLESS OTHERWISE SPECIFIED .XX-±.01 .XXX-±.005 FRACTIONS-±1/16" ANGLES: ±1/2"</p>	APPROVALS		DATE
			DRAWN: MP		11/03/06
			CHECKED: AA		01/10/08
			ENGINEER: WH		01/10/08
			APPROVED: WH		01/10/08
MATERIAL			ALLOY STEEL		

SCALE	SIZE	PART/DRAWING NO.	REV.
NONE	B	DOD-BE40	A
MODEL	BE40	SHEET	1 OF 1