

GSE



Ultra Low Profile Shear Beam Load Cells from General Sensor

- ✓ *Low profile.*
- ✓ *Stainless steel housing.*
- ✓ *Environmentally sealed.*
- ✓ *20 ft. 4 conductor cable.*
- ✓ *Capacities from 500 lb.*
- ✓ *Reliable - Durable - Precise.*

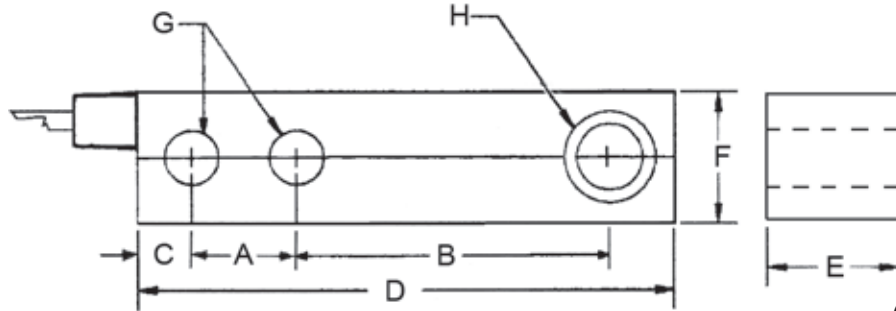


Totalcomp[®] Scales & Components

99 Reagent Lane • Fair Lawn, New Jersey 07410

Fax: 201-797-2287 • Toll Free Fax: 888-797-2288 • Phone: 201-797-2718 • Toll Free Phone: 800-631-0347

Email: sales@totalcomp.com • Website: www.totalcomp.com



GSE

Stainless Steel Beam Load Cell

The General Sensor GSE load cells are ideal replacements for HBM, SBE, SBTE and Electroscale low profile shear beams. The load hole is threaded. The environmentally sealed stainless steel housing provides protection when used in areas where foreign particles and/or corrosive substances are present.

Part Number	Electroscale	Capacity	Weight	A	B	C	D	E	F	G	H
GSE-500	017116-001	500 lb	2 lb	1.50	2.25	0.40	4.50	0.49	0.73	0.257	3/8-16

Performance

Full Scale Output
3.0 mv/v

Combined Error
± 0.03% FS

Nonlinearity
± 0.02% FS

Hysteresis
± 0.03%

Creep
± 0.03% FS in 20 min

Non-Repeatability
± 0.01% FS

Zero Balance

± 1% FS

Overload Safe

150% FS

Overload Ultimate

200% FS

Electrical

Bridge Resistance

Input 400 ohms
Output 354 ohms

Excitation Voltage

10VDC (15VDC Max)

Insulation Resistance

5KMohms@50VDC

Temperature

Compensated Range

0°F to +40°C

Temperature Operating Range

-40°F to +180°F

Effect on Zero Balance

0.0013% FS/deg F

Effect on FS Output

0.0015% FS/deg F

Mechanical

Material
Stainless Steel

Finish
Polished

Sealing
IP67

Wiring

Cable Length & Type
20 foot, 4 conductor

Cable Color Code

+ Excitation.....Red
- Excitation.....Black
+ Output.....Green
- Output.....White
Shield.....Orange

TOTALCOMP LIMITED WARRANTY

Totalcomp warrants this product to be free of defects in materials and/or workmanship and suitable for the purpose(s) intended as outlined on this sheet. This warranty is effective and shall cover the purchaser for one year from the date of shipment from our plant. If this product is found to be defective by our inspection in accordance with the above listed criteria, we will replace or repair it at our expense. For warranty service, please obtain a return authorization number from us and return the item, shipping prepaid, with a written description of the problem. We will respond promptly with the results of our evaluation.



Totalcomp[®]

Scales & Components

99 Reagent Lane

Fair Lawn, NJ 07410

Fax (201) 797-2287

Toll Free Fax (888) 797-2288

Phone (201) 797-2718

Toll Free Phone (800) 631-0347

Email sales@totalcomp.com

Website www.totalcomp.com