

TB9523

BEAM LOAD CELL



**TOTALCOMP
TB9523**

Totalcomp's TB9523 Hermetically Sealed Stainless Steel Construction

- ✓ *Stainless Steel construction.*
- ✓ *Interchangeable with
Sensortronics 65023, RTI
5123/9123.*
- ✓ *Hermetically sealed.*
- ✓ *Capacities from 1,000 lbs
to 10,000 lbs.*

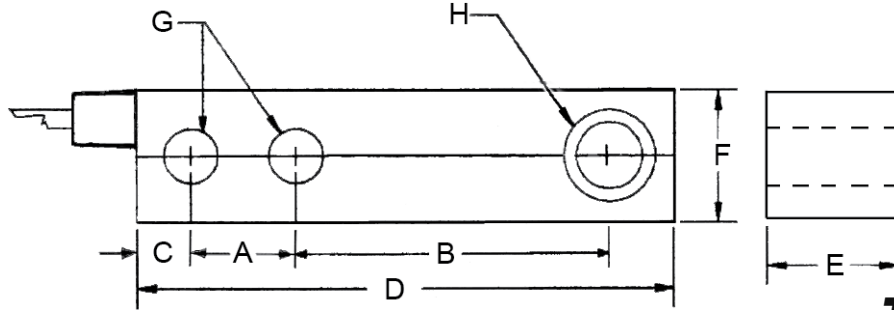


Totalcomp[®] Scales & Components

99 Reagent Lane • Fair Lawn, New Jersey 07410

Fax: 201-797-2287 • Toll Free Fax: 888-797-2288 • Phone: 201-797-2718 • Toll Free Phone: 800-631-0347

Email: sales@totalcomp.com • Website: www.totalcomp.com



TB9523

TB9523 Totalcomp Shear Beam Load Cell

The *Totalcomp* TB9523 Series beam load cells are interchangeable with *Sensortronics* 65023 beam load cells and *RTI* 5123/9123 beam load cells. The TB9523 is constructed from Stainless Steel for washability and protection from harsh environments.

Part Number	Capacity	Weight	A	B	C	D	E	F	G	H
TB9523-1K	1,000 lb	3 lb	1.00	3.00	16.62	6.12	1.25	1.25	0.53	1/2-20
TB9523-2.5K	1,500 lb	3 lb	1.00	3.00	16.62	6.12	1.25	1.25	0.53	1/2-20
TB9523-4K	4,000 lb	3 lb	1.00	3.00	16.62	6.12	1.25	1.25	0.53	1/2-20
TB9523-5K	5,000 lb	5 lb	1.50	3.75	1.71	7.71	1.50	1.50	0.78	3/4-16
TB9523-10K	10,000 lb	5 lb	1.50	3.75	1.71	7.71	1.50	1.50	0.78	3/4-16

Performance

Full Scale Output
3.00 mV/V

Combined Error
±0.008% FS

Nonlinearity
±0.002% FS

Hysteresis
±0.005%

Creep
±0.025% FS in 30 min

Non-Repeatability
±0.01 % FS

Zero Balance
- 0.2% FS

Overload Safe
150% FS

Overload Ultimate
300% FS

Electrical
Bridge Resistance
Input 350 ohms
Output 350 ohms

Excitation Voltage
10VDC (15VDC Max)

Insulation Resistance
5KM ohms @ 50VDC

Temperature

Compensated Range
-14°F to 104°F

Temperature Operating Range
-65°F to 200°F

Effect on Zero Balance
-0.21 % FS/deg F

Effect on FS Output
0.001% load/deg F

Mechanical

Material
Stainless Steel

Finish
Polished

Sealing
IP67

Wiring

Cable Length & Type
20 foot, 4 conductor

Cable Color Code
+ Excitation.....Red
- Excitation.....Black
+ Output.....Green
- Output.....White
Shield.....Bare

TOTALCOMP LIMITED WARRANTY

Totalcomp warrants this product to be free of defects in materials and/or workmanship and suitable for the purpose(s) intended as outlined on this sheet. This warranty is effective and shall cover the purchaser for one year from the date of shipment from our plant. If this product is found to be defective by our inspection in accordance with the above listed criteria, we will replace or repair it at our expense. For warranty service, please obtain a return authorization number from us and return the item, shipping prepaid, with a written description of the problem. We will respond promptly with the results of our evaluation.



Totalcomp[®]

Scales & Components

99 Reagent Lane

Fair Lawn, NJ 07410

Fax (201) 797-2287

Toll Free Fax (888) 797-2288

Phone (201) 797-2718

Toll Free Phone (800) 631-0347

Email sales@totalcomp.com

Website www.totalcomp.com