

TC-C2P1

CANISTER LOAD CELL



**Totalcomp's TC-C2P1
is designed for various types
of weighing and force
measurement applications.**

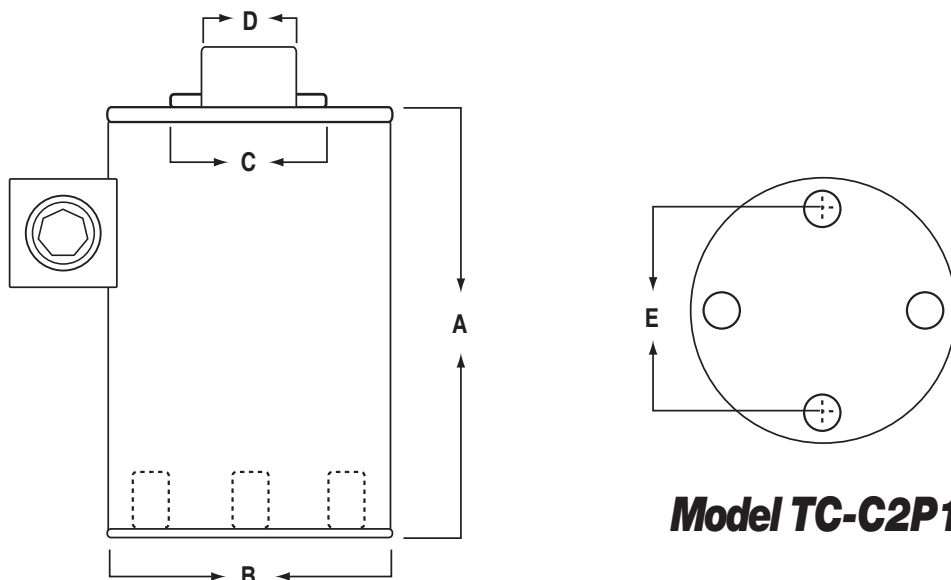
- ✓ **Compact - Rugged.**
- ✓ **Environmentally sealed.**
- ✓ **Stainless steel housing.**
- ✓ **Low deflection.**
- ✓ **Capacities range from 20k to 200k lbs.**



Totalcomp[®] Scales & Components

99 Reagent Lane • Fair Lawn, New Jersey 07410

Fax: 201-797-2287 • Toll Free Fax: 888-797-2288 • Phone: 201-797-2718 • Toll Free Phone: 800-631-0347
Email: sales@totalcomp.com Website: www.totalcomp.com



Model TC-C2P1

CANISTER LOAD CELL

The *Totalcomp* TC-C2P1 series canister load cells are interchangeable with BLH C2P1. It's low deflection and superior sealing guarantee trouble-free operation. Precision performance and long term reliability. They are constructed for washability and protection from harsh environments.

Part Number	Capacity	Weight	A	B	C	D	E	Thread
TC-C2P1-20K-SS	20,000 lb	17 lb	7.50	4.50	2.25	1.25	2-3/8	3/8-24UNF-2B x 3/8 DP
TC-C2P1-30K-SS	30,000 lb	17 lb	7.50	4.50	2.25	1.25	2-3/8	3/8-24UNF-2B x 3/8 DP
TC-C2P1-50K-SS	50,000 lb	17 lb	7.50	4.50	2.25	1.25	2-3/8	3/8-24UNF-2B x 3/8 DP
TC-C2P1-100K-SS	100,000 lb	33 lb	9.125	6.00	3-1/8	1.75	4.00	1/2-20UNF-2B x 3/4 DP
TC-C2P1-200K-SS	200,000 lb	78 lb	11.63	8.00	4.50	2.50	5.50	5/8-18UNF-2B x 1 DP

Performance

Full Scale Output
2.00 mV/V
Combined Error
±0.05% FS
Nonlinearity
±0.05% FS
Hysteresis
±0.03%
Creep
±0.02% FS in 1 hour
Non-Repeatability
±0.01% FS
Zero Balance
±1% FS

Overload, Safe

150% FS
Overload, Ultimate
300% FS

Electrical

Bridge Resistance
Input 350 ohms
Output 350 ohms
Excitation Voltage
10VDC (15VDC Max)
Insulation Resistance
5KMohms@50VDC

Temperature

Compensated Range
-10°C to +40°C
Temperature Operating Range
-16°C to +65°C
Effect on Zero Balance
0.0015% FS/deg F
Effect on FS Output
0.0008% FS/deg F

Mechanical

Material
Stainless Steel 17-4
Finish
Polished
Sealing
IP67

Wiring

Cable Length & Type
30 foot, 4 conductor
Cable Color Code
 + ExcitationGreen
 - ExcitationBlack
 + OutputWhite
 - OutputRed
 ShieldBare

TOTALCOMP LIMITED WARRANTY

Totalcomp warrants this product to be free of defects in materials and/or workmanship and suitable for the purpose(s) intended as outlined on this sheet. This warranty is effective and shall cover the purchaser for one year from the date of shipment from our plant. If this product is found to be defective by our inspection in accordance with the above listed criteria, we will replace or repair it at our expense. For warranty service, please obtain a return authorization number from us and return the item, shipping prepaid, with a written description of the problem. We will respond promptly with the results of our evaluation.



Totalcomp®

Scales & Components

99 Reagent Lane
Fair Lawn, NJ 07410
Fax (201) 797-2287
Toll Free Fax (888) 797-2288
Phone (201) 797-2718
Toll Free Phone (800) 631-0347
Email sales@totalcomp.com
Website www.totalcomp.com