

TC3P1

CANISTER LOAD CELLS



Top-quality stainless steel canister load cells from Totalcomp.

- ✓ **Capacities from 500 lbs. to 10K - IN STOCK!**
- ✓ **Stainless Steel Construction.**
- ✓ **30 ft. 4-Conductor Cable.**
- ✓ **Hermetically Sealed.**
- ✓ **Reliable - Durable - Precise.**
- ✓ **Exceeds NEMA 6 and IP67 hosedown.**

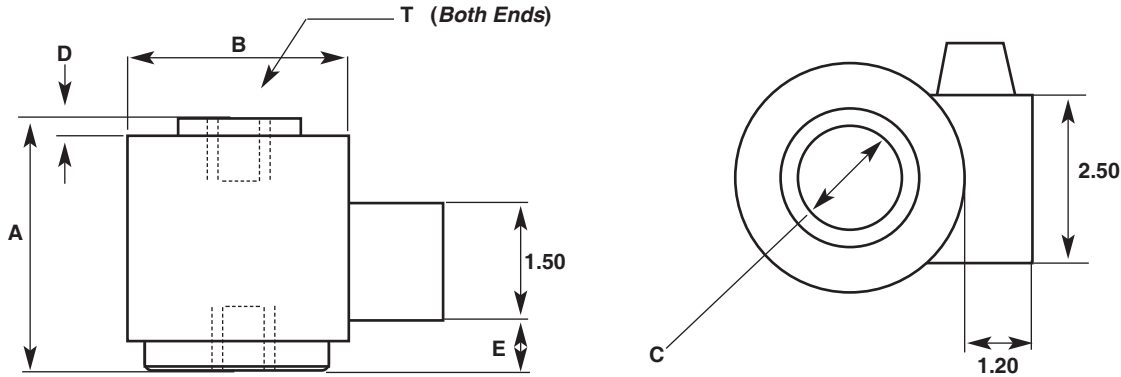


Totalcomp[®] Scales & Components

99 Reagent Lane • Fair Lawn, New Jersey 07410

Fax: 201-797-2287 • Toll Free Fax: 888-797-2288 • Phone: 201-797-2718 • Toll Free Phone: 800-631-0347
Email: sales@totalcomp.com Website: www.totalcomp.com

Model TC3P1



STAINLESS STEEL CANISTER LOAD CELLS

Interchangeable with BLH, C3P1, and T3P1.

The *Totalcomp* TC3P1 is an industrial quality tension / compression type, canister load cell. This load cell is constructed with welded, hermetically sealed, stainless steel cases to perform well under extreme environmental conditions. Typically used for weighing applications such as Truck, Track, Hopper and Tank Scales.

| Part Number | Capacity | Weight | A | B | C | D | E | Thread |
|--------------|-----------|--------|------|------|------|-----|------|---------------------|
| TC3P1-500-SS | 500 lb | 9 lb | 4.56 | 3.00 | .70 | .25 | 1.13 | 1/2-20 UNF-2Bx.63DP |
| TC3P1-1K-SS | 1,000 lb | 9 lb | 4.56 | 3.00 | .70 | .25 | 1.13 | 1/2-20 UNF-2Bx.63DP |
| TC3P1-2K-SS | 2,000 lb | 9 lb | 4.56 | 3.00 | .70 | .25 | 1.13 | 1/2-20 UNF-2Bx.63DP |
| TC3P1-3K-SS | 3,000 lb | 9 lb | 4.56 | 3.00 | .70 | .25 | 1.13 | 1/2-20 UNF-2Bx.63DP |
| TC3P1-5K-SS | 5,000 lb | 12 lb | 5.94 | 3.50 | 1.38 | .25 | 2.25 | 1-14 UNF-2Bx 1.38DP |
| TC3P1-10K-SS | 10,000 lb | 12 lb | 5.94 | 3.50 | 1.38 | .25 | 2.25 | 1-14 UNF-2Bx 1.38DP |

Performance

Full Scale Output
3.00 mV/V
Combined Error
±0.05% FS
Nonlinearity
±0.05% FS
Hysteresis
±0.03%
Creep
±0.02% FS in 1 hour
Non-Repeatability
±0.01% FS
Zero Balance
±1% FS

Overload, Safe
150% FS
Overload, Ultimate
300% FS

Electrical

Bridge Resistance
 Input 350 ohms
 Output 350 ohms
Excitation Voltage
10VDC (15VDC Max)
Insulation Resistance
5KMohms@50VDC

Temperature

Compensated Range
10°F to + 110°F
Temperature Operating Range
10°F to + 110°F
Effect on Zero Balance
0.0015% FS/deg F
Effect on FS Output
0.0008% FS/deg F

Mechanical

Material
Stainless Steel
Finish
Polished
Sealing
IP67

Wiring

Cable Length & Type
30 foot, 4 conductor
Cable Color Code
 + ExcitationGreen
 - ExcitationBlack
 + OutputWhite
 - OutputRed
 ShieldBare

TOTALCOMP LIMITED WARRANTY

Totalcomp warrants this product to be free of defects in materials and/or workmanship and suitable for the purpose(s) intended as outlined on this sheet. This warranty is effective and shall cover the purchaser for one year from the date of shipment from our plant. If this product is found to be defective by our inspection in accordance with the above listed criteria, we will replace or repair it at our expense. For warranty service, please obtain a return authorization number from us and return the item, shipping prepaid, with a written description of the problem. We will respond promptly with the results of our evaluation.



Totalcomp®

Scales & Components

99 Reagent Lane
Fair Lawn, NJ 07410
Fax (201) 797-2287
Toll Free Fax (888) 797-2288
Phone (201) 797-2718
Toll Free Phone (800) 631-0347
Email sales@totalcomp.com
Website www.totalcomp.com