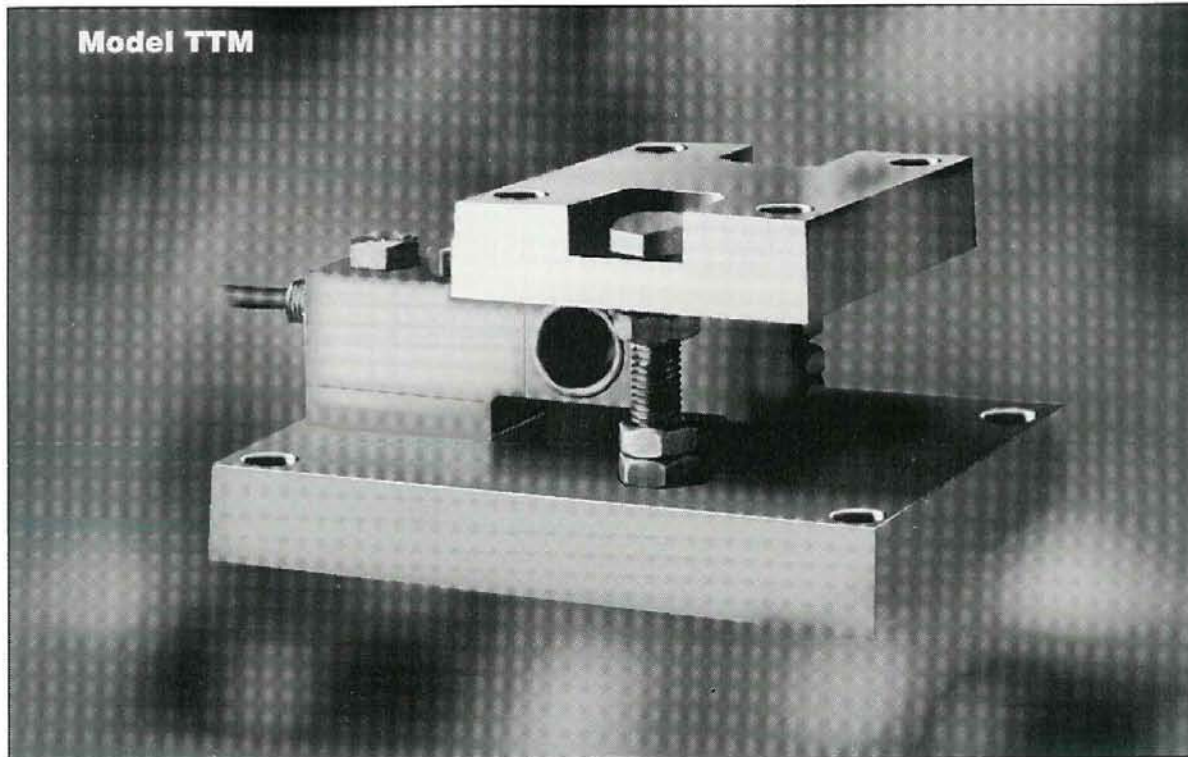


## TANK MOUNT ASSEMBLY



### **Top Quality, Stainless Steel Tank Mount Assembly with Hermetically Sealed Load Cell.**

- ✓ **Stainless Steel Construction.**
- ✓ **Overload and Overlift Protection.**
- ✓ **Rated Capacities from 500 lbs. to 10,000 lbs.**
- ✓ **Rocker Pin Loading.**
- ✓ **Perfect for lower capacity tank and vessel weighing applications.**

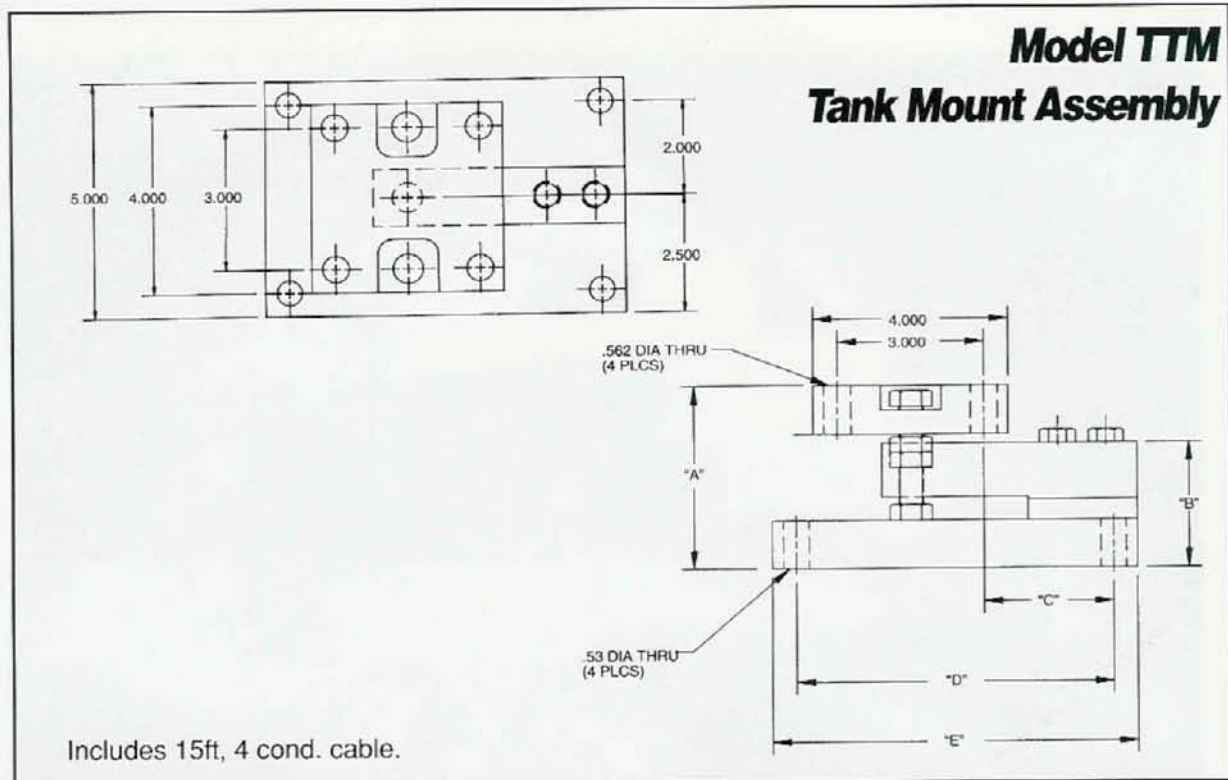


**Totalcomp** Scales & Components

99 Reagent Lane • Fair Lawn, New Jersey 07410

Fax: 201-797-2287 • Toll Free Fax: 888-797-2288 • Phone: 201-797-2718 • Toll Free Phone: 800-631-0347  
Email: [sales@totalcomp.com](mailto:sales@totalcomp.com) • Website: [www.totalcomp.com](http://www.totalcomp.com)

# SPECIFICATIONS



Part Number	Capacity	A	B	C	D	E	Weight
TTM-500-SS	500 lbs.	3.782	2.590	2.650	6.500	7.500	17 lb.
TTM-1.25K-SS	1,250 lbs.	3.782	2.590	2.650	6.500	7.500	17 lb.
TTM-2.5K-SS	2,500 lbs.	3.782	2.590	2.650	6.500	7.500	17 lb.
TTM-4K-SS	4,000 lbs.	3.986	2.590	2.650	6.500	7.500	17 lb.
TTM-5K-SS	5,000 lbs.	4.030	2.838	2.650	6.500	7.500	18 lb.
TTM-10K-SS	10,000 lbs.	4.280	3.088	3.900	7.500	8.500	21 lb.

**Rated Output**

2.0 ±.002

**Excitation Voltage**

15 vdc

**Combined Error due to Non-linearity and Hysteresis**

.03%

**Nonrepeatability**

.01%

**Creep in one hour**

.05%

**Zero balance**

1.0%

**Compensated Temperature Range**

15° to 104°F

**Temperature Effect on Output**

.08%

**Temperature Effect on Zero balance**

.25%

**Insulation Resistance**

5000

**Maximum Load**

Safe: 150%

Ultimate: 300%

Side Load: 100%

**Terminal Resistance**

Input: 350 ohms min.

Output: 350 ohms min.

**Color Code:**

Green + excitation

Black -excitation

White + output

Red - output

**TOTALCOMP LIMITED WARRANTY**

Totalcomp warrants this products to be free of defects in materials and/or workmanship and suitable for the purpose(s) intended as outlined on this sheet. This warranty is effective and shall cover the purchaser for one year from the date of shipment from our plant. If this product is found to be defective by our inspection in accordance with the above listed criteria, we will replace or repair it at our expense. For warranty service, please obtain a return authorization number from us and return the item, shipping prepaid, with a written description of the problem. We will respond promptly with the results of our evaluation.



**Totalcomp**®

**Scales & Components**

99 Reagent Lane

Fair Lawn, NJ 07410

Fax (201) 797-2287

Toll Free Fax (888) 797-2288

Phone (201) 797-2718

Toll Free Phone (800) 631-0347

Email sales@totalcomp.com

Website www.totalcomp.com