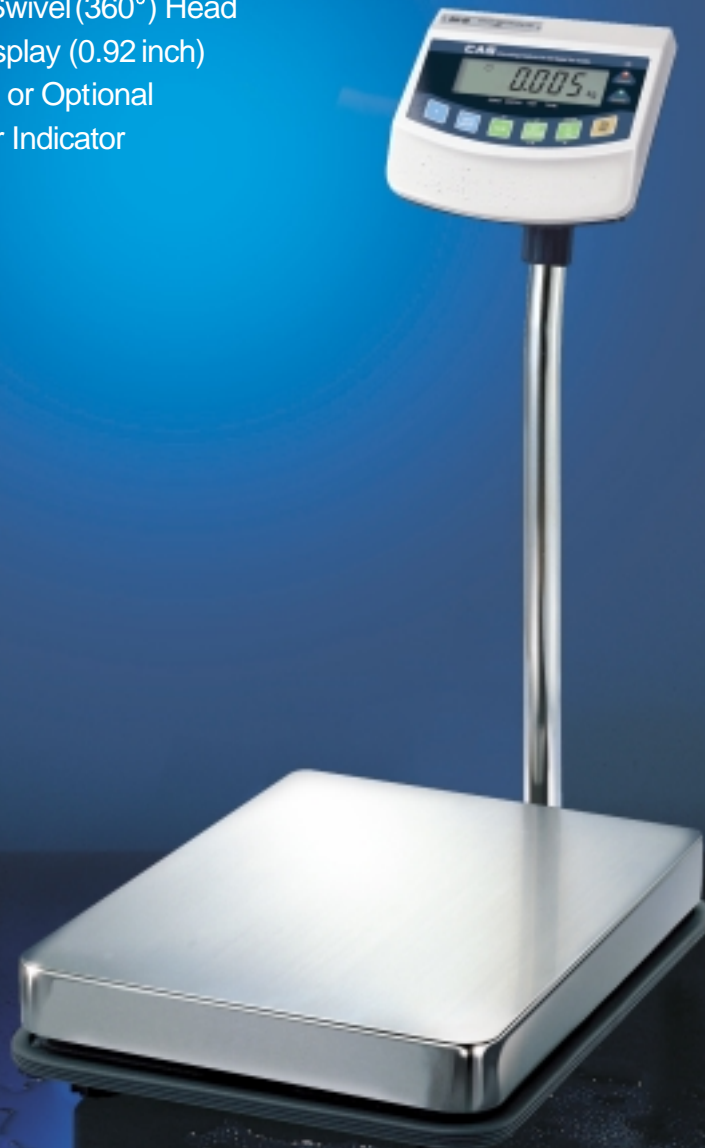


# BW series

## Battery Operated Bench Platform Scales

- Environmentally Sealed to IP 65 Standards
- Tilt (90°) and Swivel (360°) Head
- Large LCD Display (0.92 inch)
- Standard Pole or Optional Wall Mount for Indicator



ISO 9001 certified

**CAS**  
S • C • A • L • E

# BW series Battery Operated Bench Platform Scales

## FEATURES

- Battery Operated: Alkaline or R/C Battery(not included)
- Low Battery Indicator
- Counting Feature is non Legal for Trade.
- Check Weigh Function (LOW / OK / HIGH)
- On/Off, Zero/Mode, Tare/Gross, kg/lb Functions
- Easy to Read 0.92 inch, 5 Digit LCD Displays with Back Light
- Full, Single Pass, Automatic Span Adjustment
- Auto Zero Tracking
- AC Adapter (12V DC 850 mA)
- NTEP Approval number : 98-085

## SPECIFICATIONS

| Model                    | BW - 15, 30   | BW - 60, 150   |
|--------------------------|---|--|
| Weighing Capacity        | 30 × 0.01 lb, 60 × 0.02 lb<br>15 × 0.005 kg, 30 × 0.01 kg   | 150 × 0.05 lb, 300 × 0.1 lb<br>60 × 0.02 kg, 150 × 0.05 kg |
| Display                  | 5 Digit LCD (0.92 inch)   |  |
| Power Source             | DC 12V 850mA AC Adapter<br>DC 9V (1.5V × 6EA Size "C") Dry Battery<br>DC 7.2V (1.2V × 6EA Size "C") R/C Battery |  |
| Power Consumption        | Approx. 0.15 W  |  |
| Battery Life             | Alkaline dry Battery : 300hr<br>R/C Battery : 80hr  |  |
| Charging time            | 2 ~ 4 hr  |  |
| Operating Temperature    | - 10 °C ~ +40 °C  |  |
| Weighing Pan Size (inch) | 11(W) × 11(D)   | 15.7(W) × 20.7(D)  |
| Product Size (inch)      | 11(W) × 18(D) × 22.7(H)   | 16.7(W) × 26.6(D) × 29.7(H)                                |
| Product Weight (lb)      | 11.68lb   | 38.36lb  |

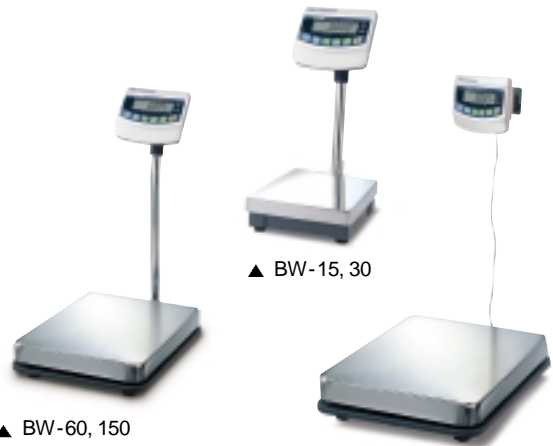
## OPTIONS

- OP-1 : Well Mount Kit
- OP-2 : RS-232 C
- OP-3 : Wet-cover



Wall Mount Kit

## APPLICATIONS



▲ BW-60, 150

▲ BW-15, 30

▲ Wall Mount Display/Platform

## SWIVEL TILT HEAD DESIGN



Tilt up-down angle, 90° (Max.)

Turn left-right angle, 360° (Max.)



## CAS USA Corporation

NJ OFFICE  
99 Murray Hill Parkway  
East Rutherford, NJ 07073  
Tel: (201) 933-9002  
Fax: (201) 933-9025

<http://www.cas-usa.com>

CA OFFICE  
733 S. State College Blvd #98  
Fullerton, CA 92831  
Tel: (714) 870-1286  
Fax: (714) 870-1167



Specifications are subject to change for improvement without prior notice. 1999. 3