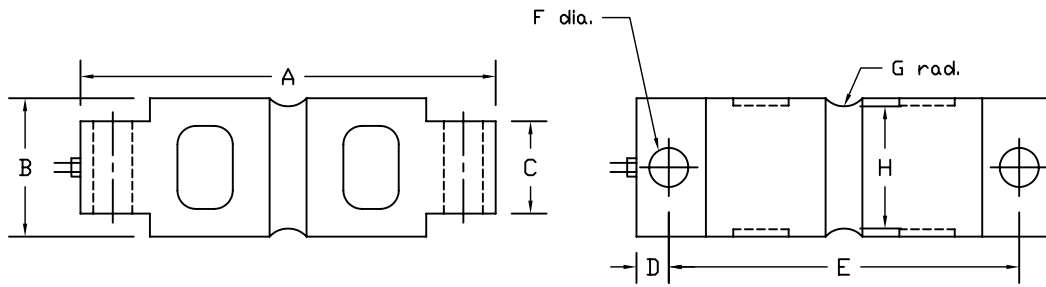


REVISIONS							
ZONE	LTR.	DESCRIPTION	DATE	ECN	BY	CKD	APVD
-	-	INITIAL RELEASE	10/01/08	-	-	-	-



PERFORMANCE SPECIFICATIONS:

- CAPACITIES: 5K, 10K, 20K, 30K, 40K, 50K, 60K, 100K, 150K, 200K, & 250K LB
- RATED OUTPUT: 3.00 mV/V ±0.1%
- SAFE OVERLOAD: 150% FS
- EXCITATION VOLTAGE: 10-20V AC/DC
- INPUT RESISTANCE: 700 ±10 OHMS
- OUTPUT RESISTANCE: 700 ±5 OHMS
- ZERO BALANCE: ±1.00% FS
- SEAL TYPE: ENVIRONMENTALLY SEALED, IP67
- NON-LINEARITY: ±0.03% FS
- HYSTERESIS: ±0.02% FS
- REPEATABILITY: ±0.01% FS
- CREEP: ±0.02% FS
- NTEP RATED
- CLASS 111L 10,000 DIVISION, MULTIPLE CELL
- COMPENSATED TEMPERATURE RANGE: -10°C - +40°C
- TEMPERATURE EFFECT ON ZERO: ±0.0027%/FS/°C
- TEMPERATURE EFFECT ON OUTPUT: ±0.0015%/FS/°C
- INSULATION RESISTANCE: >5000 MEGOHMS
- LOAD CELL CABLE: 4 CONDUCTOR, 60 FT BRAIDED SHIELD
- LOAD CELL WIRING:
 - GREEN +EXC
 - BLACK -EXC
 - WHITE +SIG
 - RED -SIG
 - BRAID/YELLOW: SHIELD
- FM APPROVED

RATED CAPACITY	DIMENSIONS									
	A	B	C	D	E	F	G	H		
5K-10K	8.12	1.70	1.12	0.62	6.88	0.66	0.50	1.48		
20K	8.12	1.95	1.12	0.62	6.88	0.66	0.50	1.48		
30K-60K	10.25	3.00	2.37	0.88	8.50	1.06	1.00	2.73		
100K	11.25	3.50	2.50	0.88	9.50	1.06	1.50	3.24		
150K	11.25	3.90	2.80	0.88	9.50	1.06	1.50	3.64		
200K-250K	16.10	5.38	4.60	1.55	13.00	1.56	2.00	5.17		

DO NOT ALTER WITHOUT AGENCY NOTIFICATION

COTI GLOBAL SENSORS, INC.
CG-5103 DOUBLE ENDED BEAM
NTEP LOAD CELL

<p>THIS DRAWING USES THIRD ANGLE PROJECTION</p>	APPROVALS	DATE	SCALE		MODEL CG-5103
	DRAWN: MTSI	10/01/08	NONE	B	
	CHECKED: MB	10/01/08	PART/DRAWING NO.		
	ENGINEER: AA	10/01/08	DOD-CG-5103		
APPROVED: AA	10/01/08	REV.		A	
THIS DOCUMENT CONTAINS PROPRIETARY INFORMATION AND SUCH INFORMATION MAY NOT BE REPRODUCED OR DISCLOSED FOR ANY PURPOSE OR USED TO PRODUCE THE ARTICLE OR SUBJECT WITHOUT WRITTEN PERMISSION FROM COTI GLOBAL SENSORS, INC.	TOLERANCES UNLESS OTHERWISE SPECIFIED .XX±.01 .XXX±.005 FRACTIONS±1/16" ANGLES: ±1/2°	MATERIAL		ALLOY STEEL	
		SHEET		1 OF 1	