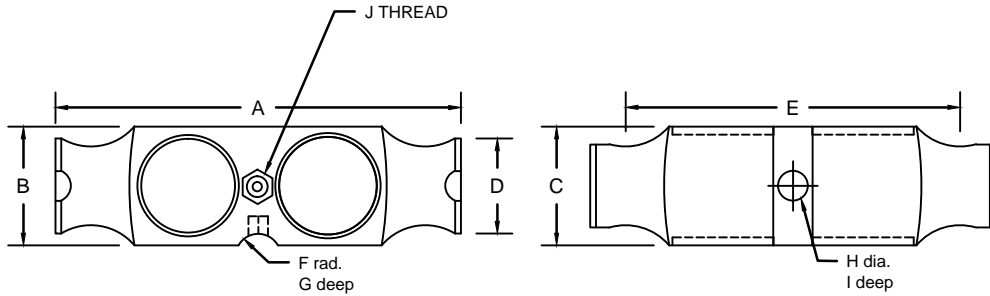


REVISIONS							
ZONE	LTR.	DESCRIPTION	DATE	ECN	BY	CKD	APVD
-	-	INITIAL RELEASE	10/01/08	-	-	-	-
-	C	REDRAWN FOR LABELING CONSISTENCY	12/15/15	2016-48	TB	AB	AA



PERFORMANCE SPECIFICATIONS:

- CAPACITIES: 50K, 60K, 65K, 75K, 100K, & 125K LB
- RATED OUTPUT: 3.00 mV/V  $\pm 0.1\%$
- SAFE OVERLOAD: 150% FS
- EXCITATION VOLTAGE: 10-20V AC/DC
- INPUT RESISTANCE: 700  $\pm 10$  OHMS
- OUTPUT RESISTANCE: 700  $\pm 5$  OHMS
- ZERO BALANCE:  $\pm 1.00\%$  FS
- SEAL TYPE: ENVIRONMENTALLY SEALED, IP67
- NON-LINEARITY:  $\pm 0.03\%$  FS
- HYSTERESIS:  $\pm 0.02\%$  FS
- REPEATABILITY:  $\pm 0.01\%$  FS
- CREEP:  $\pm 0.02\%$  FS
- NTEP RATED
- CLASS 111L 10,000 DIVISION, MULTIPLE CELL
- COMPENSATED TEMPERATURE RANGE: -10°C - +40°C
- TEMPERATURE EFFECT ON ZERO:  $\pm 0.0027\%$ FS/°C
- TEMPERATURE EFFECT ON OUTPUT:  $\pm 0.0015\%$ FS/°C
- INSULATION RESISTANCE: >5000 MEGOHMS
- LOAD CELL CABLE: 4 CONDUCTOR, 50 FT BRAIDED SHIELD
- LOAD CELL WIRING:
  - GREEN +EXC
  - BLACK -EXC
  - WHITE +SIG
  - RED -SIG
  - BRAID/YELLOW: SHIELD
- FM APPROVED

RATED CAPACITY	DIMENSIONS									
	A	B	C	D	E	F	G	H	I	J
50K-125K	10.25	3.00	3.00	2.40	8.50	1.00	0.28	0.75	0.78	1/2-14 NPT

"DO NOT ALTER WITHOUT AGENCY NOTIFICATION"

**COTI GLOBAL SENSORS, INC.**

**CG-5223 DOUBLE ENDED BEAM  
NTEP LOAD CELL**

SCALE	SIZE	PART/DRAWING NO.	REV.
NONE	B	DOD-CG-5223	C
MODEL	CG-5223	SHEET 1 OF 1	

<p>THIS DRAWING USES THIRD ANGLE PROJECTION</p>	APPROVALS		DATE
	DRAWN:	MTSI	10/01/08
	CHECKED:	MB	10/01/08
	ENGINEER:	AA	10/01/08
<p>THIS DOCUMENT CONTAINS PROPRIETARY INFORMATION AND SUCH INFORMATION MAY NOT BE REPRODUCED OR DISCLOSED FOR ANY PURPOSE OR USED TO PRODUCE THE ARTICLE OR SUBJECT WITHOUT WRITTEN PERMISSION FROM COTI GLOBAL SENSORS, INC.</p>	APPROVED:		10/01/08
	MATERIAL		
ALLOY STEEL			

TOLERANCES UNLESS OTHERWISE SPECIFIED  
 .XX-±.01  
 .XXX-±.005  
 FRACTIONS-±1/16"  
 ANGLES: ±1/2"