

BEAM LOAD CELL

DSB Metric

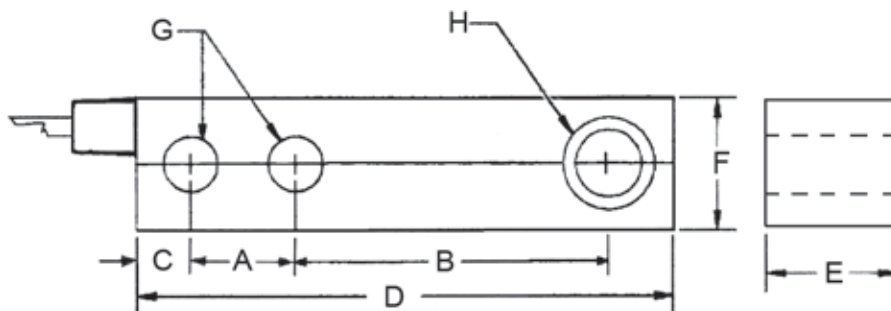


High quality, affordable shear beam used in harsh environment applications

- ✓ Alloy tool steel housing nickel plated finish
- ✓ Capacities from 500 lb. to 10,000 lb.
- ✓ Accurate and reliable weighing performance.
- ✓ Four conductor, 12 ft. cable.
- ✓ Environmentally sealed.
- ✓ Interchangeable with Metric TSB, Metric 65023 and Metric 5123 load cells.



Totalcomp[®] Scales & Components



Model DSB Metric

DSB Metric DIAMOND BEAM LOAD CELL

The *Totalcomp* DSB Metric series beam load cells are top quality durable units. The unit features and IP67-compliant alloy tool steel metal housing to resist dust, water, and other contaminants

Part Number	Capacity	Weight	A	B	C	D	E	F	G	H
DSB-500-M	500 lb	3 lb	1.00	3.00	0.60	5.12	1.25	1.25	0.53	M12 x 1.75
DSB-1K-M	1,000 lb	3 lb	1.00	3.00	0.60	5.12	1.25	1.25	0.53	M12 x 1.75
DSB-1.5K-M	1,500 lb	3 lb	1.00	3.00	0.60	5.12	1.25	1.25	0.53	M12 x 1.75
DSB-2K-M	2,000 lb	3 lb	1.00	3.00	0.60	5.12	1.25	1.25	0.53	M12 x 1.75
DSB-2.5K-M	2,500 lb	3 lb	1.00	3.00	0.60	5.12	1.25	1.25	0.53	M12 x 1.75
DSB-4K-M	4,000 lb	3 lb	1.00	3.00	0.60	5.12	1.25	1.25	0.53	M12 x 1.75
DSB-5KSE-M	5,000 lb	3 lb	1.00	3.00	0.60	5.12	1.25	1.25	0.53	M12 x 1.75
DSB-5K-M	5,000 lb	5 lb	1.50	3.75	0.75	6.75	1.50	1.50	0.78	M18 x 1.65
DSB-10K-M	10,000 lb	5 lb	1.50	3.75	0.75	6.75	1.50	1.50	0.78	M18 x 1.65

Performance

Full Scale Output
3.00 mV/V

Combined Error
±0.03% FS

Nonlinearity
±0.03% FS

Hysteresis
±0.02%

Creep
±0.02% FS in 1 hour

Non-Repeatability
±0.01% FS

Zero Balance
±1.0% FS

Overload Safe
150% FS

Overload Ultimate
300% FS

Electrical

Bridge Resistance
Input 350 ohms
Output 350 ohms

Excitation Voltage
10 VDC (15VDC Max)

Insulation Resistance
10KMohms@50VDC

Temperature

Compensated Range
-10°C to +40°C

Temperature Operating Range
-18°C to +65°C

Effect on Zero Balance
0.0015% FS/deg F

Effect on FS Output
0.0008% FS/deg F

Mechanical

Material
Alloy Tool Steel

Finish
Nickel Plated

Sealing
IP67

Wiring

Cable Length & Type
20 foot, 4 conductor

Cable Color Code

+ Excitation.....Red
- Excitation.....Black
+ Output.....Green
- Output.....White
Shield.....Bare

TOTALCOMP LIMITED WARRANTY

Totalcomp warrants this product to be free of defects in materials and/or workmanship and suitable for the purpose(s) intended as outlined on this sheet. This warranty is effective and shall cover the purchaser for one year from the date of shipment from our plant. If this product is found to be defective by our inspection in accordance with the above listed criteria, we will replace or repair it at our expense. For warranty service, please obtain a return authorization number from us and return the item, shipping prepaid, with a written description of the problem. We will respond promptly with the results of our evaluation.



Totalcomp[®]

Scales & Components

99 Reagent Lane
Fair Lawn, NJ 07410
Fax (201) 797-2287
Toll Free Fax (888) 797-2288
Phone (201) 797-2718
Toll Free Phone (800) 631-0347
Email sales@totalcomp.com
Website www.totalcomp.com