

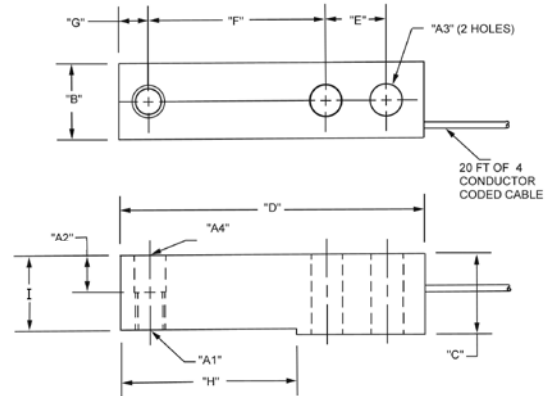
H35

Single-Ended Beam, Stainless Steel NTEP 1:5000 Class III Multiple Cell, Welded-Seal, IP67

HBM



Picture is a representation of actual product



Specifications

Full Scale Output: 3.0mV/V	Safe Overload: 150% Full scale	Insulation Resistance: 5000 megohms	Cable Color Code: Green+ Excitation Black.....- Excitation White+ Signal Red- Signal Yellow Shield
Output Resistance: 350 ohms +/- 3	Safe Sideload: 100% Full scale	Seal Type: Welded-seal, IP67	Warranty: One-year limited warranty
Input Resistance: >350	Rated Excitation: 10V DC (15V maximum)	Cable Length: 20 ft/6.1 m	Approvals:
Material/Finish: Stainless steel	Nonlinearity: 0.03% Full scale	Cable Diameter: .190 polyurethane jacket	
Temperature: Compensated range 14°F to 104°F/-10°C to 40°C	Hysteresis: 0.03% Full scale		

Dimensions

RATED CAPACITY	A1	A2	A3	A4	B	C	D	E	F	G	H	I
lb/inches												
500-5000	1/2-20 UNF-2B	.62	.53	.53	1.21	1.19	5.12	1.00	3.00	.50	2.85	1.120
kg/mm												
453.6-2268	1/2-20 UNF-2B	15.8	13.5	13.5	30.7	30.2	130.05	25.4	76.2	12.7	72.4	28.4

Order Information

LOAD RATING	PART #	PRICE
500 lb (226.8 kg)	84818	Consult
1,000 lb (453.6 kg)	64876	Consult
2,500 lb (1134.0 kg)	64877	Consult
4,000 lb (1814.4 kg)	64878	Consult
5,000 lb (2268.0 kg)	64879	Consult

Interchangeable Products

MANUFACTURER	PART #
Mettler Toledo	
500 lb-8 ft cable	TB601019-008
1,000 lb-20 ft cable	TB601016-020
2,500 lb-8 ft cable	TB601016-008
4,000 lb-20 ft cable	TB601017-020
5,000 lb-8 ft cable	TB601018-008

Rice Lake Weighing Systems RLH35 page 127.

www.ricelake.com | Phone: 800-472-6703

