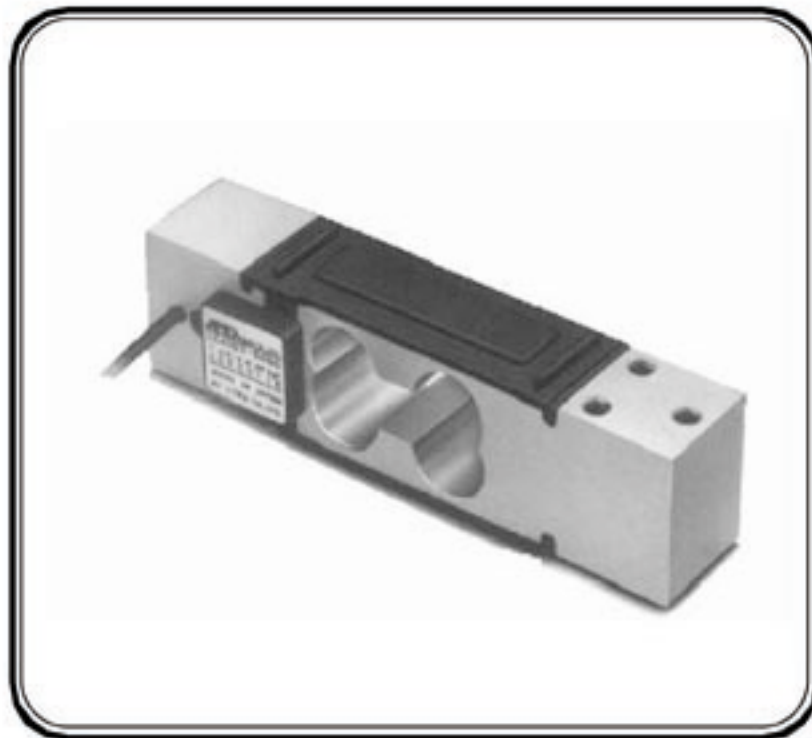


LC-4102 Series

Loadcells



- An aluminium single point loadcell
- Available with or without waterproofing (30kg version only)
- Parallelogram type construction for reliability and strength
- Five capacities suitable for bench scale applications
- Temperature compensated from -10°C ~ $+40^{\circ}\text{C}$

LC-4102 Series

Loadcells

Specifications

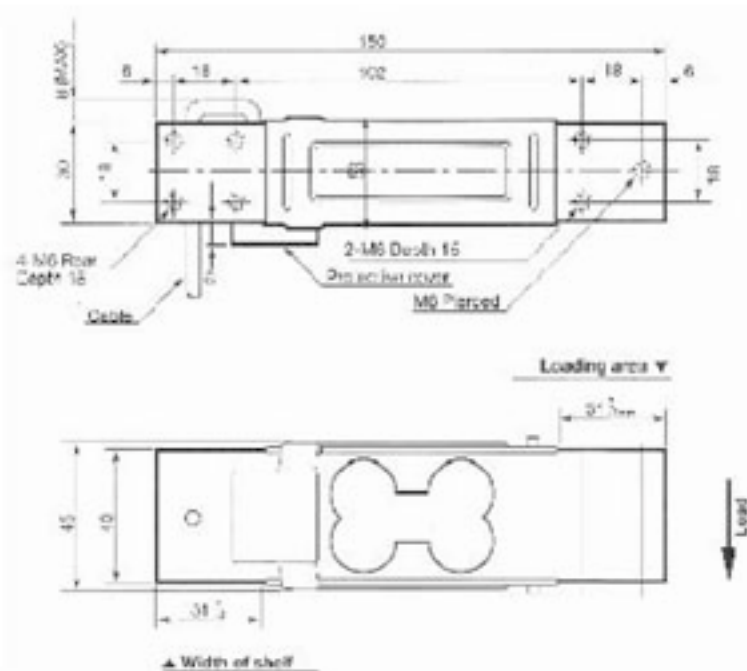
Rated Capacities	10kgf, 15kgf, 30kgf, 60kgf, 150kgf
Rated Output	1mV/V+15% -0
Maximum safe overload	300% of rated capacity
Combined error	+/-0.015% of rated output
Creep	+/-0.05% of rated output/hour
Zero balance	+/-20% of rated output
Recommended excitation voltage	12V
Maximum excitation voltage	15V
Input terminal resistance	Approximately 400ohms
Output terminal resistance	350+/-5ohms
Insulation resistance	> 5000Megohms at DC50V
Typical cable length	1.5metres

Dimensions

All dimensions are in millimetres

Cable Colour Code

RED	EXC+
WHITE	EXC-
GREEN	SIG+
BLUE	SIG-
YELLOW	SHIELD



AND

A&D MERCURY PTY. LTD.
ACN 007 556 809
Head Office
32 Dew Street
THEBARTON
SA 5031
Telephone (08) 8352 3033
Facsimile (08) 8352 7409

Email: sales@andmercury.com.au
Internet page: <http://www.andmercury.com.au>

Your Dealer

Victorian Office
Unit 4, 313 Arden Street
KENSINGTON
Victoria 3031
Telephone (03) 9372 1522
Facsimile (03) 9372 1193

New South Wales Office
Unit 4, 14 Abbott Road
SEVEN HILLS
New South Wales 2147
Telephone (02) 9674 5466
Facsimile (02) 9674 2544