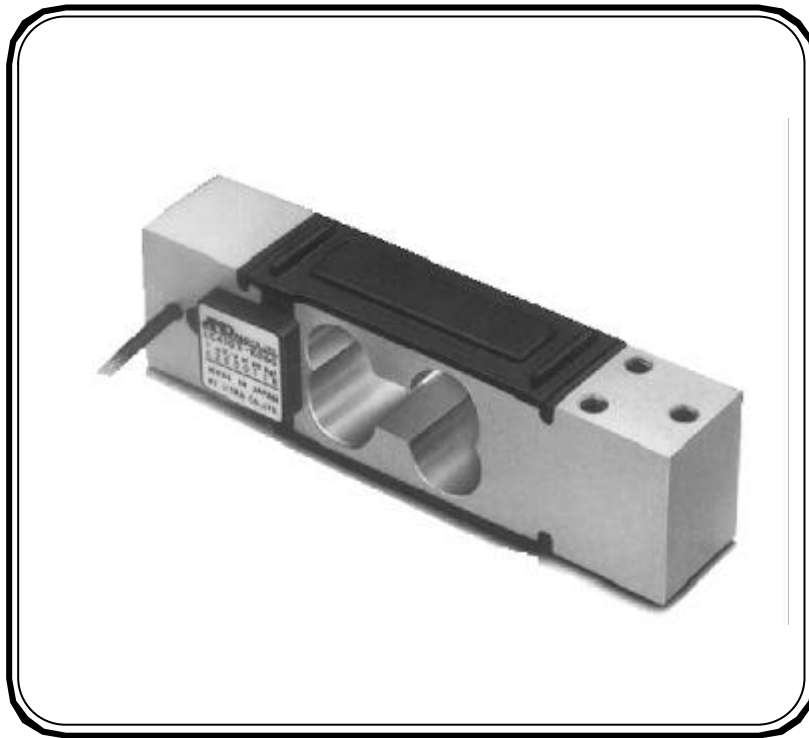


LC-4103 Series

Loadcells



- An aluminium single point loadcell
- Available with or without waterproofing
- Parallelogram type construction for reliability and strength
- Three capacities suitable for industrial scale applications
- Temperature compensated from -10°C ~ $+40^{\circ}\text{C}$

LC-4103 Series

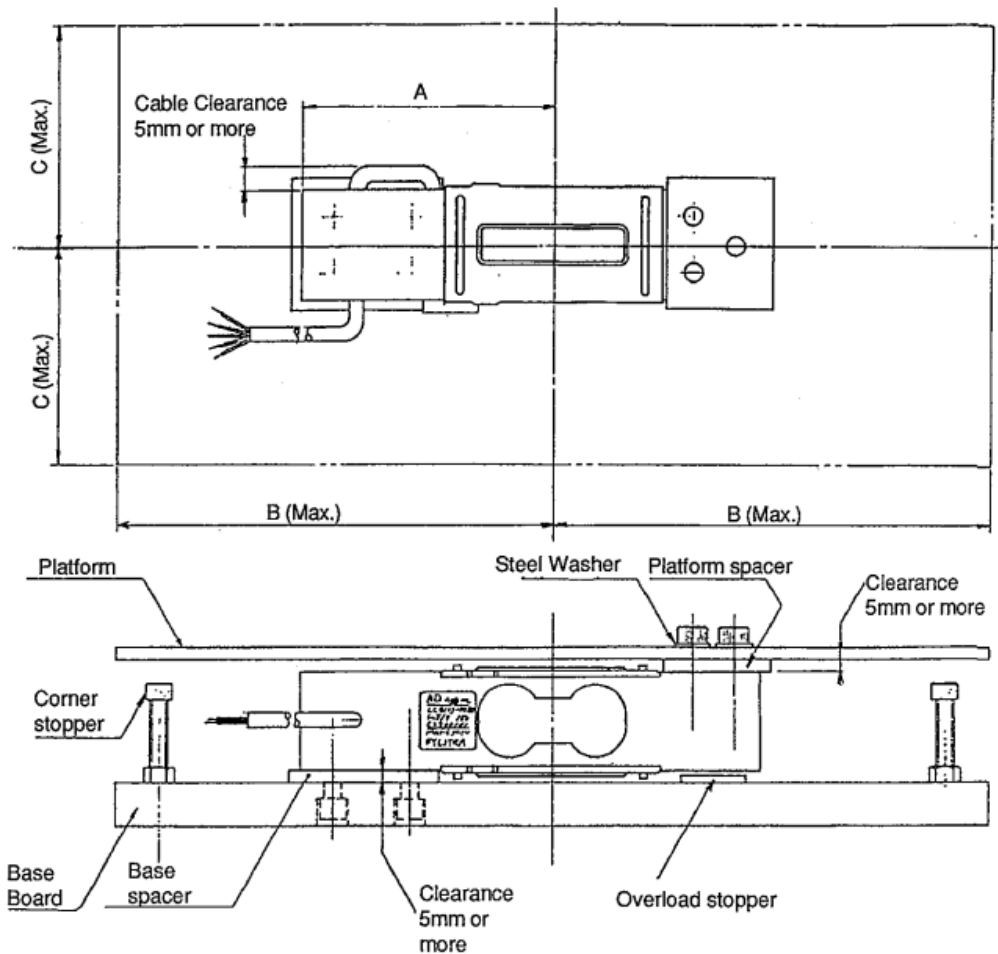
Loadcells

Specifications

Rated Capacities	60kgf, 100kgf, 150kgf, 300kgf
Rated Output	1mV/V+15% -0
Maximum safe overload	300% of rated capacity
Combined error	+/-0.015% of rated output
Creep	+/-0.05% of rated output/hour
Zero balance	20 +/-5% of rated output
Recommended excitation voltage	12V
Maximum excitation voltage	15V
Input terminal resistance	Approximately 400ohms
Output terminal resistance	350+/-5ohms
Insulation resistance	> 5000Megohms at DC50V
Typical cable length	2metres

Dimensions

All dimensions are in millimetres



Dimensions of platform

(mm)

Cable color

	Length	Width	A	B	C		
LC-4102 Series	400	400	75	200	200	Red	Excitation +
						White	Excitation -
LC-4103 Series	600	400	115	300	200	Green	Signal +
						Blue	Signal -
						Yellow	Shield