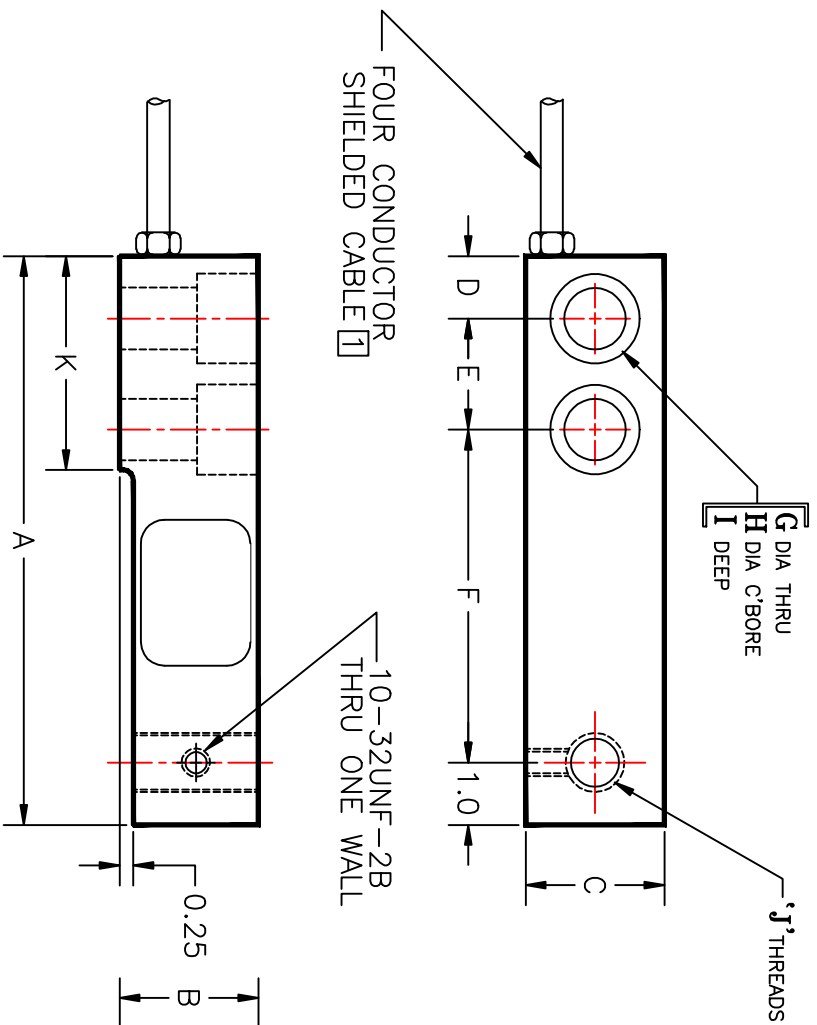


CAPACITY LBS	A	B	C	D	E	F	G	H	I	J' THREADS	K
1K - 5K	6.75	1.45	1.45	0.50	1.50	3.75	0.53	0.765	0.52	1/2-20UNF-2B	2.50
10K	7.75	1.45	1.45	0.75	2.00	4.00	0.78	1.295	0.50	3/4-16UNF-2B	3.50

REVISION			
LTR	DESCRIPTION	DATE	APPROVED
N/A	NEW RELEASE	05-08-95	<i>JL.B.</i>
A	ADDED 10-32 THD MOVED CABLE	05-11-99	<i>JL.B.</i>



**SPECIFICATIONS**

STANDARD CAPACITIES 1K TO 10K  
 EXCITATION VOLTAGE 10 VDC - MAX 15VDC  
 RATED OUTPUT 3.0 MV/V NOMINAL  
 NON-LINEARITY <0.03% FSO  
 HYSTERESIS <0.02% FSO  
 NON-REPEATABILITY <0.01% FSO  
 ZERO BALANCE ±2.0% FSO  
 BRIDGE RESISTANCE 350 OHMS  
 SAFE OVERLOAD 150% RATED CAPACITY  
 OFF CENTER LOAD ERROR 0.01% FSO  
 TEMPERATURE 0-150° F  
 COMPENSATED RANGE <0.0008% FSO/° F  
 EFFECT ON OUTPUT <0.0011% FSO/° F  
 EFFECT ON ZERO

**ELECTRICAL TERMINATION**

INPUT OUTPUT SHIELD  
 RED (+) GREEN (+) YELLOW  
 BLACK (-) WHITE (-)

**COMPRESSION POSITIVE**

- 4 : SPECIAL WIRING
- 3 : DIMENSIONS SHOWN ARE IN INCHES
- 2 : MATERIAL: STAINLESS STEEL 17-4
- 1 : 20 FT CABLE LENGTH, PVC JACKET

**NOTES**

THESE DRAWINGS AND SPECIFICATIONS CONTAIN INFORMATION TO BE CONFIDENTIAL AND PROPRIETARY BY ARTECH INDUSTRIES, INC. AND SHALL NOT BE REPRODUCED, COPIED OR USED FOR MANUFACTURE OR SALE OF APPARATUS OR DEVICES WITHOUT THE WRITTEN APPROVAL OF ARTECH INDUSTRIES, INC.

UNLESS OTHERWISE SPECIFIED DIMENSIONS ARE IN INCHES.  
 X=.015  
 XX=.010  
 XXX=.005  
 ANGULAR=0d 30'

SCALE : NONE  
 DRAWN BY : M.SANATHARA  
 APP BY :  
 DATE : 05-08-95



MODEL: SSS30510[SPL]  
 71031