

TB743

BEAM LOAD CELL



Totalcomp's TB743 is interchangeable with 743 Flexmount Style Beam Load Cells

- ✓ *Washdown safe.*
- ✓ *Low profile design.*
- ✓ *Environmentally sealed.*
- ✓ *Capacities from 1K to 20K lbs.*
- ✓ *Stainless steel construction.*
- ✓ *Available with optional armor jacket stainless steel braided cable.*

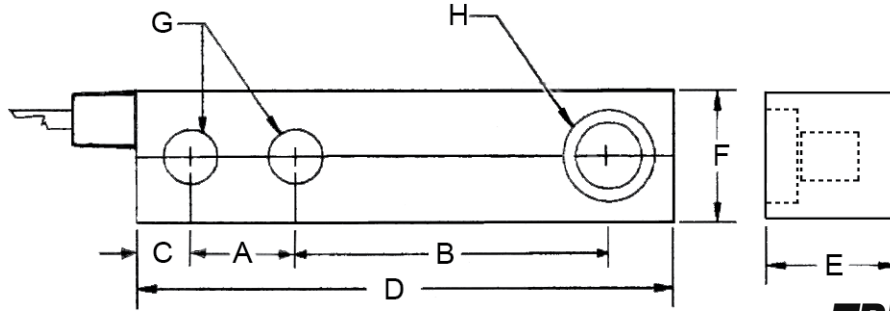


Totalcomp[®] Scales & Components

99 Reagent Lane • Fair Lawn, New Jersey 07410

Fax: 201-797-2287 • Toll Free Fax: 888-797-2288 • Phone: 201-797-2718 • Toll Free Phone: 800-631-0347

Email: sales@totalcomp.com • Website: www.totalcomp.com



TB743

TB743 TOTALCOMP SHEAR BEAM LOAD CELL

The *Totalcomp* TB743 series beam load cells are ideal replacements for Toledo 743 Flexmount load cells. They are built to meet or exceed all manufacturers specs for this type of cell. They are constructed from Stainless Steel for washability and protection from harsh environments. *Flexmount* is a registered trademark of Mettler Toledo.

Part Number	Capacity	Weight	A	B	C	D	E	F	G	H
TB743-1K	1,000 lb	6 lb	2.500	3.880	0.620	7.993	1.450	1.463	0.500	1.200
TB743-3K	3,000 lb	6 lb	2.500	3.880	0.620	7.993	1.450	1.463	0.500	1.200
TB743-5K	5,000 lb	6 lb	2.500	3.880	0.620	7.993	1.450	1.463	0.500	1.200
TB743-10K	10,000 lb	9 lb	2.625	4.860	0.754	9.250	2.059	2.059	0.767	1.480
TB743-20K	20,000 lb	18 lb	3.250	5.419	1.035	11.000	2.375	2.335	1.036	1.835

Performance

Full Scale Output
2.00 mV/V

Combined Error
±0.05% FS

Nonlinearity
±0.05% FS

Hysteresis
±0.05%

Creep
±0.03% FS in 20 min

Non-Repeatability
±0.02% FS

Zero Balance
±1% FS

Overload Safe

150% FS

Overload Ultimate

150% FS

Electrical

Bridge Resistance

Input 350 ohms

Output 350 ohms

Excitation Voltage

10 VDC (15VDC Max)

Insulation Resistance

10KMohms@50VDC

Temperature

Compensated Range

-10°C to +40°C

Temperature Operating Range

-10°C to +40°C

Effect on Zero Balance

0.003% FS/deg F

Effect on FS Output

0.002% FS/deg F

Mechanical

Material

Stainless Steel

Finish

Polished

Sealing

Hermetic

Wiring

Cable Length & Type

20 foot, 4 conductor

Cable Color Code

+ Excitation.....Green

- Excitation.....Black

+ Output.....White

- Output.....Red

Shield.....Yellow

TOTALCOMP LIMITED WARRANTY

Totalcomp warrants this product to be free of defects in materials and/or workmanship and suitable for the purpose(s) intended as outlined on this sheet. This warranty is effective and shall cover the purchaser for one year from the date of shipment from our plant. If this product is found to be defective by our inspection in accordance with the above listed criteria, we will replace or repair it at our expense. For warranty service, please obtain a return authorization number from us and return the item, shipping prepaid, with a written description of the problem. We will respond promptly with the results of our evaluation.



Totalcomp[®]

Scales & Components

99 Reagent Lane

Fair Lawn, NJ 07410

Fax (201) 797-2287

Toll Free Fax (888) 797-2288

Phone (201) 797-2718

Toll Free Phone (800) 631-0347

Email sales@totalcomp.com

Website www.totalcomp.com