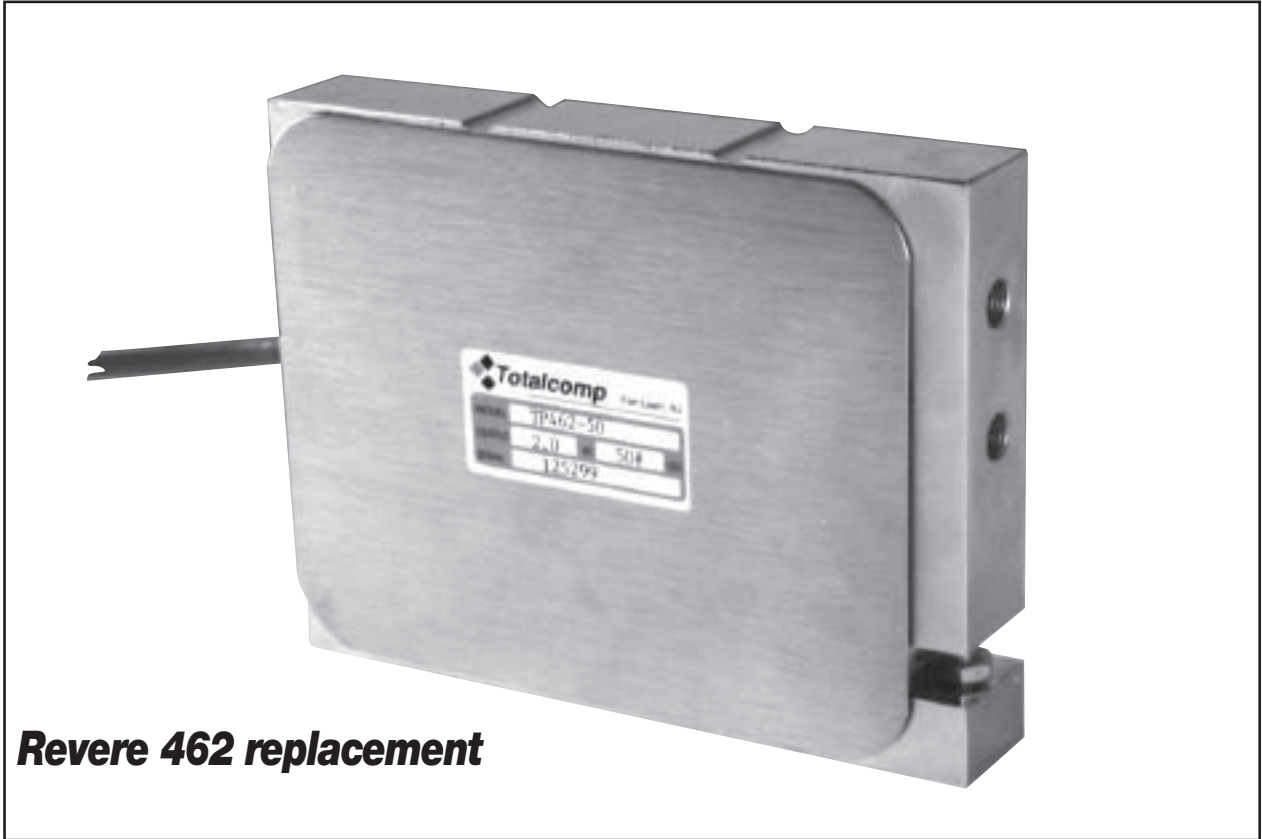


TP462

SINGLE POINT LOAD CELL



Aluminum Single Point Load Cells from Totalcomp.

- ✓ **Capacities from 5 to 250 lbs. - IN STOCK!**
- ✓ **Aluminum construction.**
- ✓ **Environmentally sealed.**
- ✓ **Reliable - durable - precise.**
- ✓ **10 ft. four conductor cable.**
- ✓ **Superior value.**

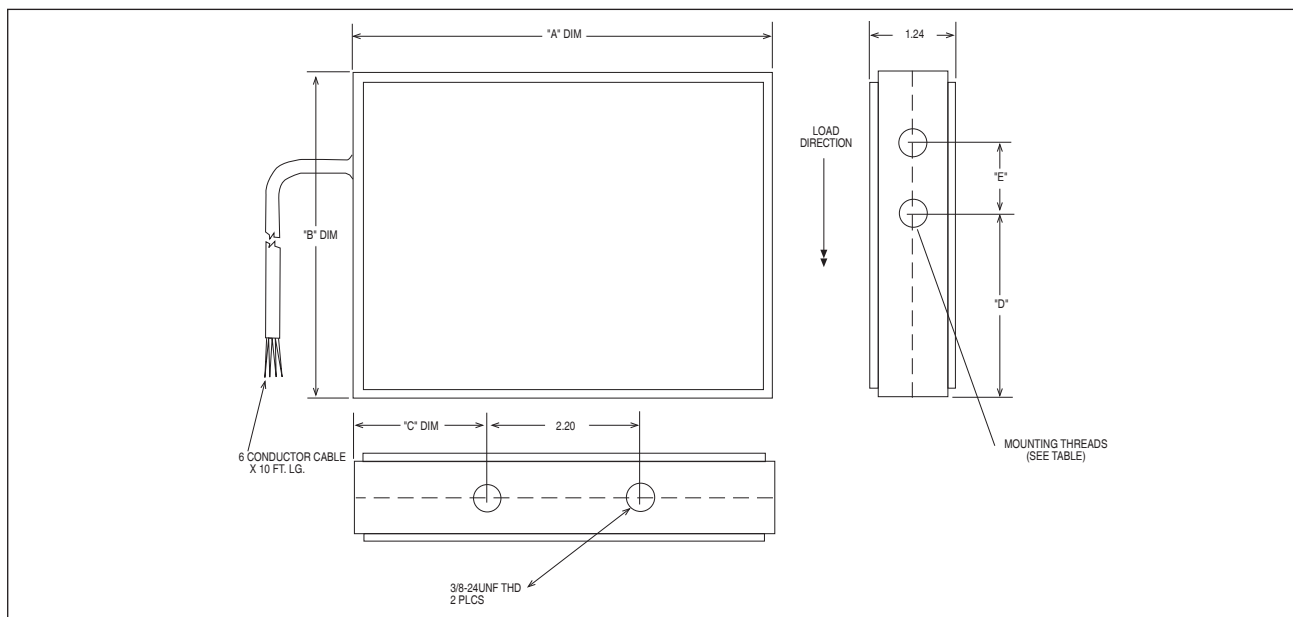


Totalcomp[®] Scales & Components

99 Reagent Lane • Fair Lawn, New Jersey 07410

Fax: 201-797-2287 • Toll Free Fax: 888-797-2288 • Phone: 201-797-2718 • Toll Free Phone: 800-631-0347

Email: sales@totalcomp.com • Website: www.totalcomp.com



SINGLE POINT LOAD CELL

MODEL	CAPACITY	A	B	C	D	E	MOUNT. THDS.
TP462-5	5 LBS.	5.13	4.00	1.68	2.60	.75	1/4-28 x .5 DP
TP462-10	10 LBS.	5.13	4.00	1.68	2.60	.75	1/4-28 x .5 DP
TP462-20	20 LBS.	5.13	4.00	1.68	2.60	.75	1/4-28 x .5 DP
TP462-50	50 LBS.	6.00	4.60	1.90	2.60	1.00	1/4-28 x .5 DP
TP462-100	100 LBS.	6.00	4.60	1.90	2.60	1.00	1/4-28 x .5 DP
TP462-250	250 LBS.	6.00	4.60	1.90	2.35	1.50	1/4-28 x .5 DP

Performance

Full Scale Output
2.0 mv/v

Nonlinearity
±0.02% FSO

Creep
.02% FSO in 20 min.

Hysteresis
±0.03% FSO

Electrical

Bridge Resistance
Input 350 ohms
Output 350 ohms

Excitation Voltage
15VDC

Temperature

Compensated Range
0°F to +150°F

Effect on Rated Output
0.0007% FSO

Effect on Zero Balance
0.0013% FSO

Mechanical

Material
Aluminum

Wiring

Cable length & Type
10 foot, 4 conductor

Cable Color Code
+ ExcitationRed
- ExcitationBlack
+ OutputGreen
- OutputWhite
ShieldOrange

TOTALCOMP LIMITED WARRANTY

Totalcomp warrants these products to be free of defects in materials and/or workmanship and suitable for the purpose(s) intended as outlined on this sheet. This warranty is effective and shall cover the purchaser for one year from the date of shipment from our plant. If these products are found to be defective by our inspection in accordance with the above listed criteria, we will replace or repair it at our expense. For warranty service, please obtain a return authorization number from us and return the item, shipping prepaid, with a written description of the problem. We will respond promptly with the results of our evaluation.



Totalcomp®

Scales & Components

99 Reagent Lane
Fair Lawn, NJ 07410
Fax (201) 797-2287
Toll Free Fax (888) 797-2288
Phone (201) 797-2718
Toll Free Phone (800) 631-0347
Email sales@totalcomp.com
Website www.totalcomp.com