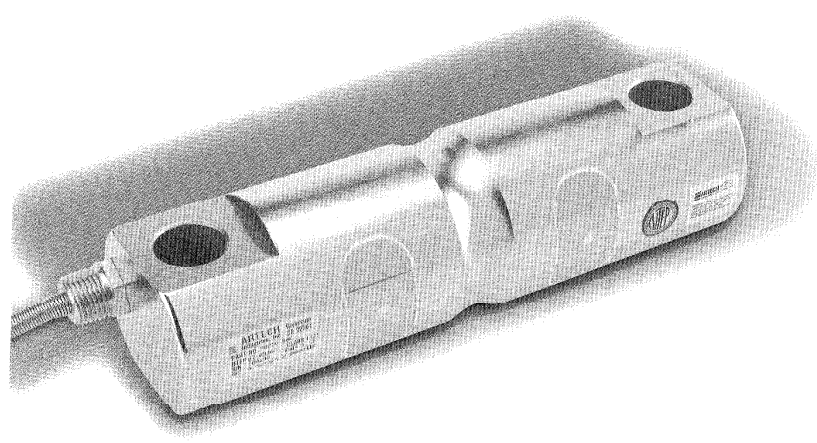


"a preferred name in load cell technology"

**Model 70210**



**NTEP C.O.C. #87-094A2**

**Double Ended Shear Beam**

**FEATURES:**

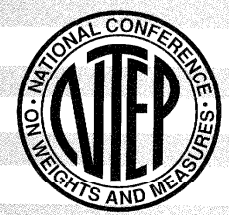
- 5K to 250K pounds capacities
- Environmentally protected
- Optional Weigh Module hardware for tank scales
- NTEP certified versions available for Class III 5000 division, Class III L 10000 division.
- Stainless Steel versions available.
- Factory Mutual (F.M.) Approved †

**DESCRIPTION:**

Model 70210, a double ended shear beam, is ideal for low profile pitless truck scales, tank and track scales. The cell is constructed of high alloy tool steel for repeatability and use in areas where shock, ruggedness and overloading situations exist. The gage areas are environmentally protected with a thick, double waterproof seal and stainless steel plate. Load cells are supplied with an integral 30 feet cable. (Please specify other cable length.)

**PERFORMANCE SPECIFICATIONS**

<b>Standard Capacities (lbs.):</b>	5K, 10K, 20K, 50K, 60K, 100K, 150K, 200K, 250K
<b>Excitation Voltage:</b>	10VDC - Maximum 15VDC
<b>Rated Output:</b>	3.0 mv/v ± .1%
<b>Non-Linearity:</b>	< 0.03% FSO (Full Scale Output)
<b>Hysteresis:</b>	< 0.02% FSO
<b>Non-Repeatability:</b>	< 0.01% FSO
<b>Zero Balance:</b>	±1.0% FSO
<b>Bridge Resistance:</b>	700 ± 7.0 ohms
<b>Safe Overload:</b>	150% of Rated Capacity
<b>Temperature:</b>	
<b>Compensated Range:</b>	0 - 150 deg. F
<b>Effect on Output:</b>	< 0.0008% FSO/deg. F
<b>Effect on Zero:</b>	< 0.0011% FSO/deg. F
<b>Finish:</b>	Electroless Nickel/Chrome Plated



**APPROVED**

# Model 70210



CAPACITY LBS.	A	B	C	D	E	F	G	H	I	L RAD	K
5K - 20K	8.12	4.06	1.44	1.12	.62	6.87	.62	.65	1.75	0.50	1.48
50K - 65K	10.25	5.12	1.87	2.36	.88	8.50	1.00	1.00	3.00	1.00	2.75
100K - 150K	11.25	5.62	1.87	2.50	.88	9.50	1.00	1.06	3.50	1.00	3.25
200K - 250K	16.10	8.05	3.05	4.60	1.55	13.00	1.50	1.56	5.38	2.00	5.17

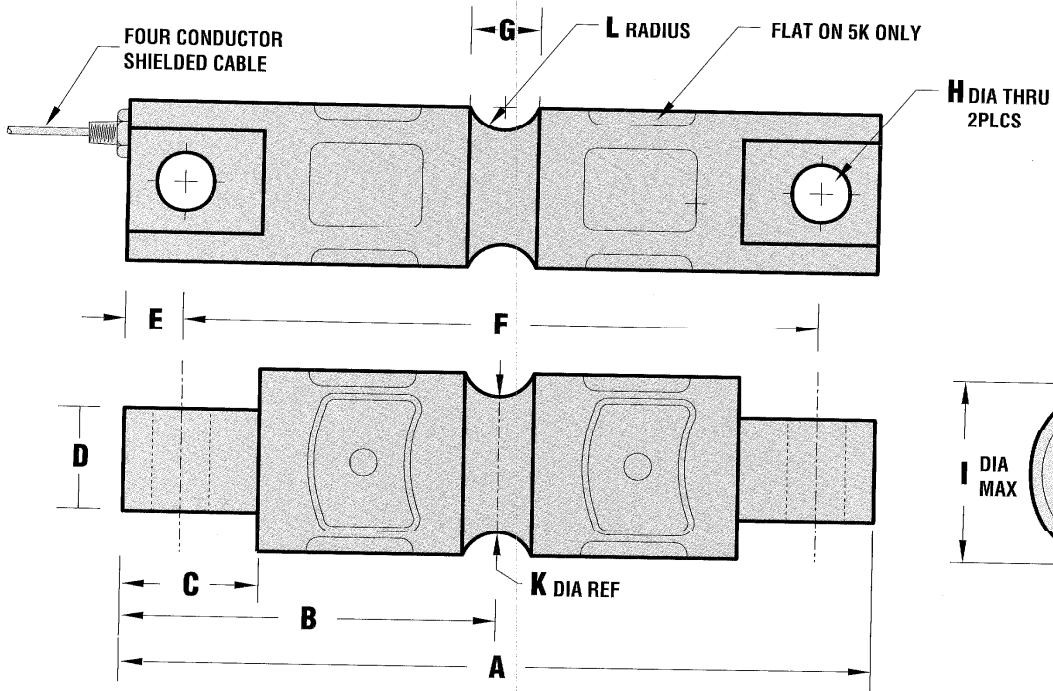
## ELECTRICAL TERMINATION

INPUT    OUTPUT    SHIELD

RED (+)    GREEN (+)

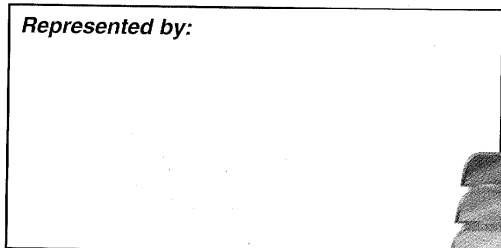
BLACK (-)    WHITE (-)

**COMPRESSION POSITIVE**



† Factory Mutual Systems approved as intrinsically safe when installed per F.M. approved installation drawing. Contact ARTECH sales department for details.

Represented by:



1966 Keats Drive, Riverside, CA 92501

