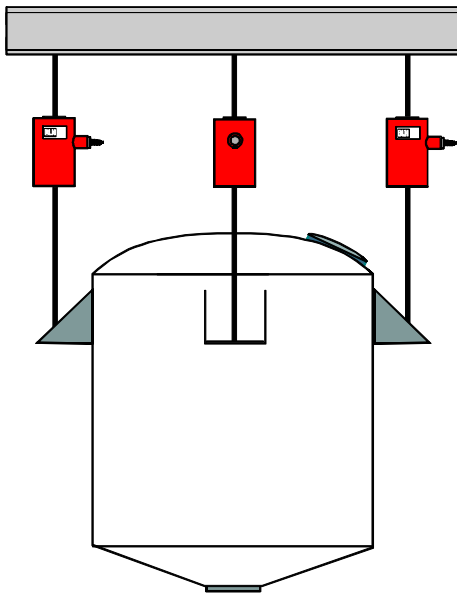


**Model T2P1 Load Cell****Applications:**

**Tensile Testing  
Crane Scales  
Grain Silos**



- **Capacity Range 20,000 to 100,000 Pounds**
- **Tension Service**
- **Operational: -30° to +175°F**
- **Low Deflection**
- **Environmentally Sealed**
- **FM and CSA Approved**

**Product Description**

T2P1 load cells, developed by BLH Electronics, are designed for various types of weighing and force measurement. T2P1 load cell construction uses all the advantages of SR-4 strain gages.

T2P1 Load Cells are fabricated with high strength 'column type' elements that provide output signals of 2 mV/V at rated capacity. Each cell is designed for minimum deflection and maximum safe overload during periods of full capacity tension.

Double diaphragm fabrication and gage linearizing combine to offer precision performance and long term reliability. Low deflection and superior sealing guarantee trouble-free operation. Relatively low mass and small deflection under load, produce excellent frequency response. Overall, T2P1 cells perform superbly in many environments where other transducers cannot.

**BLH Electronics, Inc.***An ISO 9001 Registered Company*

# Product Specifications and Outline Dimensions

## Performance

Capacity	20,000 - 100,000 lb
Rated Output	2mV/V +/-0.1%
Combined Error (Hys.& Lin.)	+/- 0.03% full scale
Repeatability - %RO	0.02
Creep - %RO (20 min.)	0.02

## Approvals

FM (Factory Mutual)	3611 (Class I, II, III; Div.1,2; Groups A-G)
CSA	C22.2 (Class I, II, III; Div.1,2; Groups A-G)

## Electrical

Recommended Excitation	10V ac-dc
Maximum Excitation	20V ac-dc
Zero Balance - %RO	1.0
Input Resistance	350 +/-3.5 ohms
Output Resistance	350 +/-3.5 ohms
Number of Bridges	single
Electrical Connection	35 foot cable

BLH is continually seeking to improve product quality and performance. Specifications may change accordingly.

Many performance specifications are proven on a statistical sample basis.

## Temperature

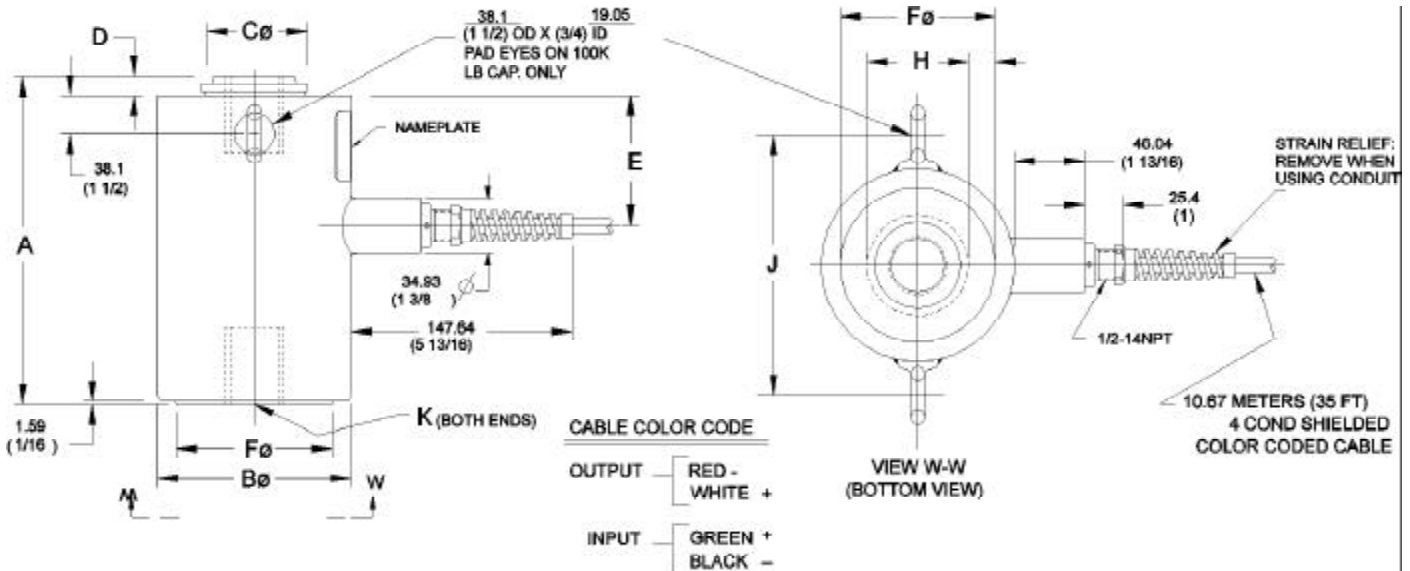
Safe Range	-30 to 175°F
Compensated Range	+15 to +115°F
Effect on Zero Balance	0.0015 %RO/°F
Effect on Rated Output	0.0008% Load/°F

## Adverse Load Ratings

Safe Overload	150% Full Capacity
Ultimate Overload	300% Full Capacity

## Mechanical Data

Capacity (lb)	20,000	50,000	100 K
Weight (lb)	25	55	160
Deflection - inches	0.0075	0.0100	0.0090
Deflection - mm	0.191	0.254	0.2286
Nat Freq. (Hz) at EFF.WT (lb)	3500	3100	2100
	2	5	25



CAP. POUNDS	A	Bø	Cø	D	E	Fø	G	H	J	K (TAPPED)
20,000	8 1/2	5	2 3/4	1/2	3 3/8	4	1	2 5/8	N/A	1 1/2-12UNF-2B X 2 DP
50,000	11 7/16	6 1/2	4	5/8	5	5 3/4		3 3/4		2-12UN-2B X 2 5/8 DP
100,000	17 3/4	9	5 1/2	1 1/8	9	7 3/4		4 3/4		10 1/2

DIMENSIONS SHOWN IN INCHES

## MAIN OFFICE

75 Shawmut Road  
Canton, MA 02021  
Tel: (781) 821-2000  
Fax: (781) 828-1451  
<http://www.blh.com>

# BLH Electronics, Inc.

ISO 9001 Registered

U.S.A. Facility

## CANADA

41 Horner Ave, Unit 5  
Toronto, Ontario M8Z 4X4  
Tel: (416) 251-2554  
Fax: (416) 251-2690  
Toll Free: (800) 567-6098