



- Dual Range 60 lb Capacity
- 3,000 PLU's & 1,000 Ingredients
  - Optional Networking
  - 50+ Standard Label Formats
- Legal for Trade - NTEP # 07-042

# CL5000

LABEL PRINTING SCALE

Wireless  
Networking  
Available



**CAS**  
S • C • A • L • E



# CL 5000 LABEL PRINTING Scale

## PRODUCT LINE-UP



Standard Bench Model



Pole Model

## FEATURES

### Display

The **VFD** display is used for displaying Tare, Weight, Unit Price and Total Price. The **Alphanumeric** Display is used for all program menus, PLU names, scroll message, etc. The bright purple display gives high legibility for programming and promotion.



### PLU Keys

The **Double Click Call** feature allows the operator to recall PLU s by double-clicking the speed key instead of having to use the shift key.

LAMB PATTIES	VEAL CUBES	VEAL CUBE STEAK	PORK LOIN TOP LOIN
CHICKEN SKEWER	VEAL FOR STEW	VEAL BONES	PORK SAUSAGE
BEEF SKEWER	LAMB LOIN	LAMB RIB CHOPS	DUCK

The Standard Bench Model comes with 96 total speed keys, while the Pole Model comes equipped with a total of 144 Speed Keys.

### PRINTER & LABEL CARTRIDGE

Achieve print speeds up to 100 mm/sec and print resolution of 202 dpi for crisp clear labels. The removable label cartridge makes it easy for users to quickly reload labels. Designed for simplicity.



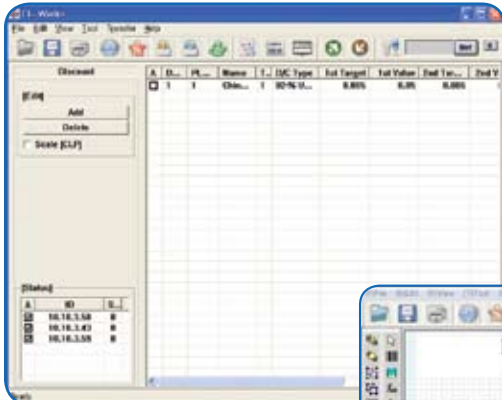
### Label Formats

The CL 5000 comes with over 50 preset common label formats stored in memory. Up to 40 more custom label formats can be added using the label editing function of the CL-Works software program. Various die cut or continuous label sizes up to 120mm in length can be used.



# CL 5000 LABEL PRINTING Scale

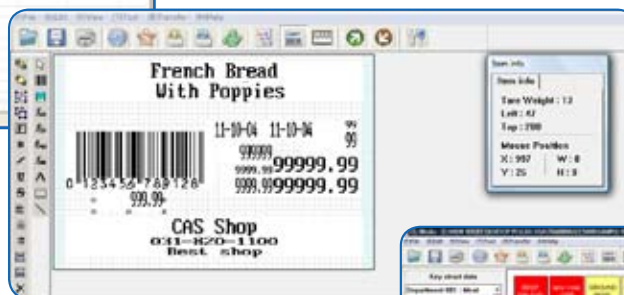
## CL WORKS - PC SOFTWARE



### PLU Editor

Easy PLU Management control for all scales. PLU's can be imported and exported easily

The CL Works software program allows you to create and edit PLU s, program store information, design custom labels and unique keyboard layouts and much, much more.



### Label Editor

Create and edit custom label formats. Easily download your custom labels to the scales.

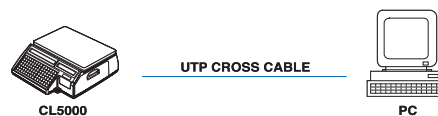
### Keypad Editor

Setup and download custom keyboard designs. Use color images in your keys for easy recognition.

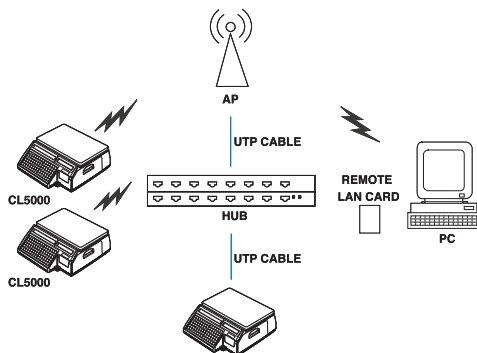


## OPTIONAL NETWORKING

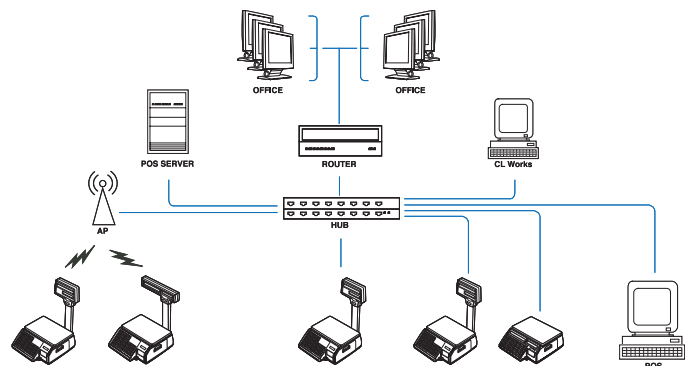
- TCP/IP Communication Protocol
- Up to 99 Scales
- IEEE 802.11B Specification Wireless Network
- 64/128 bit WEP Security system
- 1 to 1, Multi to Multi. Wired/Wireless Network
- Network structure suitable for large, medium or small markets



1 to 1



Multi to Multi



Wired/Wireless Network

# CL 5000 LABEL PRINTING Scale

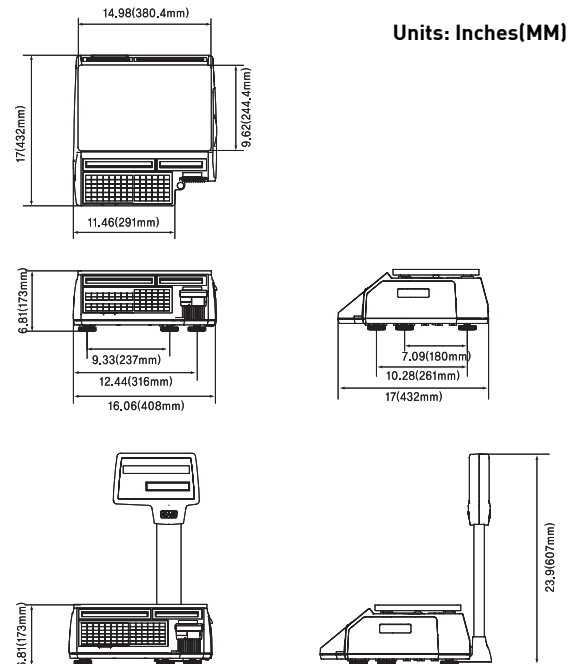
## Features

- 60 lb Capacity Dual Range
- Standard: 3,000 PLU's & 1,000 Ingredients  
Optional: 10,000 PLU's & 2,000 Ingredients
- Speed Keys  
Standard: 96 (48 keys x 2)  
Pole: 144 (72 keys x 2)
- 50+ Standard Label Formats plus  
up to 40 Custom Labels
- High Speed Thermal Printer
- Flash ROM for easy firmware upgrades
- Multiple bar code formats
- Spanish or Korean Characters
- Menu Code System
- CL-Works Software Package Included
  - PLU Editor
  - Label Editor
  - Keypad Editor
- **Options:**
  - Ethernet Networking
  - Wireless Networking
  - Expanded Memory
- Legal for Trade - COC # 07-042

## Specifications

<b>Model</b>	<b>CL5000</b>
<b>Weighing Capacity</b>	60 lb Capacity Dual Range 0 - 30 x 0.01 lbs / 30 - 60 x 0.02 lbs 0 - 15 kg x 5 g / 15 - 30 kg x 10 g
<b>Measurement Type</b>	Load Cell
<b>Display Type</b>	VFD & Alphanumeric
<b>Display Digit</b>	4/4/6/6 - Tare/Weight/Unit Pr/Total Pr
<b>Weight Units</b>	Lb or kg
<b>Printer</b>	Thermal Print
<b>Label Size</b>	Width: 40mm ~ 60mm Length: 30mm ~ 120mm
<b>Barcode Formats</b>	UPC, UPC13, EAN13, EAN13+5, I2of5, Code128, Code93, Codabar, and more.
<b>Interface</b>	RS-232C
<b>Keyboard Interface</b>	PS/2
<b>Power Source</b>	AC 100~240V, 50/60Hz
<b>Operating Temperature</b>	-10°C ~ 40°C / 14°F ~ 104°F
<b>Platter Size (inch/mm)</b>	15 (W) x 9.6 (D) 381 (W) x 244 (D)
<b>Dimensions (inch/mm)</b>	Standard (inch): 16 (W) x 17 (D) x 6.8 (H) (mm) 406.4 (W) x 432 (D) x 173 (H) Pole (inch): 16 (W) x 17 (D) x 23.9 (H) (mm) 406.4 (W) x 432 (D) x 607 (H)
<b>Product Weight</b>	Standard: 24 lbs (11 kg) / Pole: 25 lbs (11.3 kg)

## Dimensions



**CAS USA Corporation**  
Corporate Office

99 Murray Hill Parkway  
East Rutherford, NJ 07073

Tel: (201) 933-9002

Fax: (201) 933-9025

<http://www.cas-usa.com>

