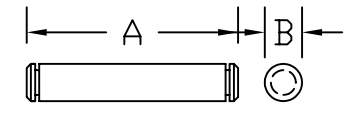
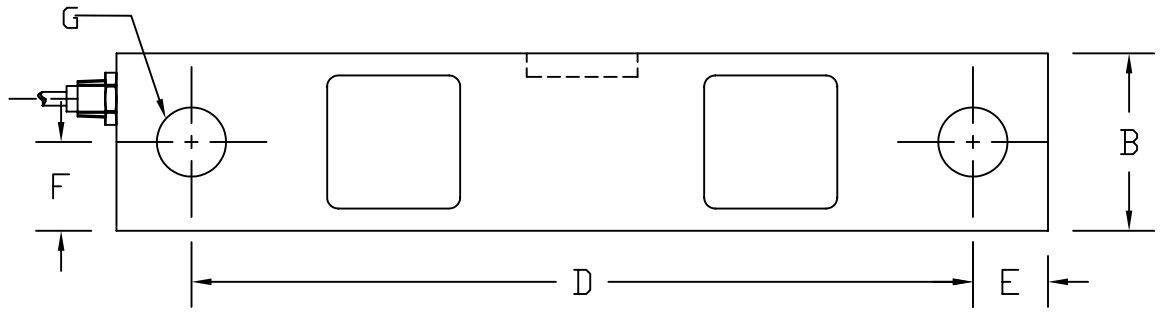
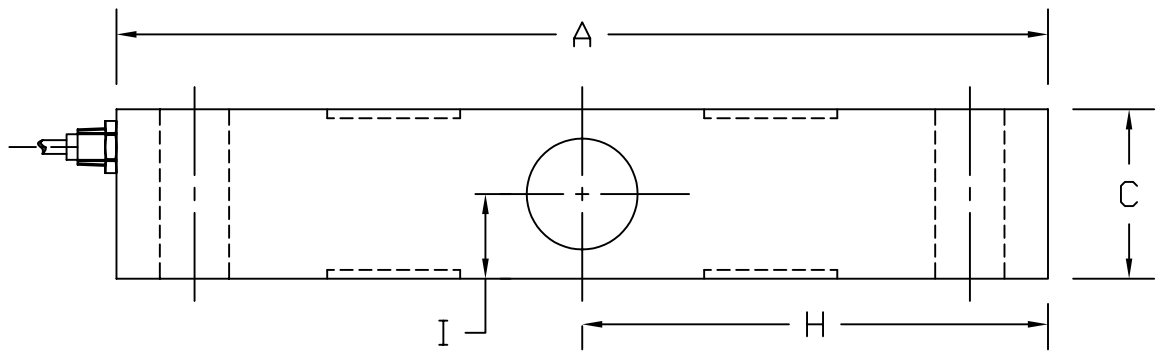
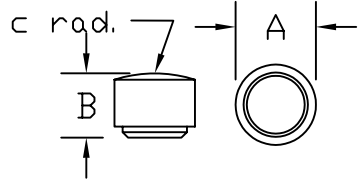


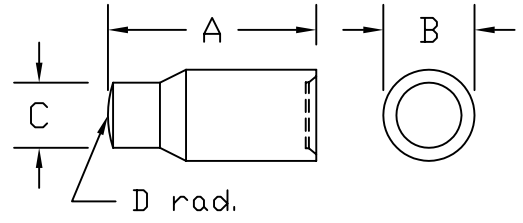
REVISIONS							
ZONE	LTR.	DESCRIPTION	DATE	ECN	BY	CKD	APVD
-	-	INITIAL RELEASE	11/03/06	-	-	-	-



600 Support Pin



606 Load Button



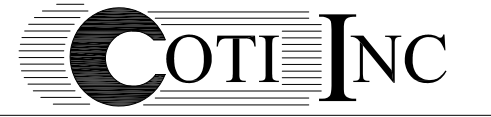
607 Rocker Pin

**PERFORMANCE SPECIFICATIONS:**

- CAPACITIES: 40K & 50K LB
- RATED OUTPUT: 3.00 mV/V ±1%
- SAFE OVERLOAD: 150% FS
- EXCITATION VOLTAGE: 10-15V AC/DC
- BRIDGE RESISTANCE: 700 OHMS
- ZERO BALANCE: ±1.00% FS
- SEAL TYPE: ENVIRONMENTALLY SEALED
- NTEP RATED
- CLASS 111L, 10,000 DIVISION, MULTIPLE CELL
- COMPENSATED TEMPERATURE RANGE: -10°C - +40°C
- TEMPERATURE EFFECT ON ZERO: ±0.02%FS/10°C
- TEMPERATURE EFFECT ON OUTPUT: ±0.02%FS/10°C
- INSULATION RESISTANCE: >5000 MEGOHMS
- LOAD CELL CABLE: 4 CONDUCTOR, 60 FT (BRAIDED SHIELD)
- LOAD CELL WIRING:
  - GREEN +EXC
  - BLACK -EXC
  - WHITE +SIG
  - RED -SIG
  - BRAID/YELLOW: SHIELD

RATED CAPACITY	DIMENSIONS										
	A	B	C	D	E	F	G	H	I		
40K-50K	10.50	2.44	1.94	8.75	0.88	1.22	0.78	5.25	0.97		
#600 Support Pin	4.25	0.75	-	-	-	-	-	-	-		
#606 Load Button	1.25	1.00	8.00	-	-	-	-	-	-		
#607 Rocker Pin	4.00	1.75	1.25	8.00	-	-	-	-	-		

\*DO NOT ALTER WITHOUT AGENCY NOTIFICATION\*



**CI-STR1 DOUBLE-ENDED BEAM NTEP LOAD CELL**

<p>THIS DRAWING USES THIRD ANGLE PROJECTION</p>	APPROVALS	DATE
	DRAWN: MP	11/03/06
	CHECKED: AA	11/03/06
	ENGINEER: WH	11/03/06
<p>THIS DOCUMENT CONTAINS PROPRIETARY INFORMATION AND SUCH INFORMATION MAY NOT BE REPRODUCED OR DISCLOSED FOR ANY PURPOSE OR USED TO PRODUCE THE ARTICLE OR SUBJECT WITHOUT WRITTEN PERMISSION FROM COTI, INC.</p>	APPROVED: WH	11/03/06
	MATERIAL	ALLOY STEEL
<p>TOLERANCES UNLESS OTHERWISE SPECIFIED          .XX-±.01          .XXX-±.005          FRACTIONS-±1/16"          ANGLES: ±1/2"</p>		

SCALE	SIZE	PART/DRAWING NO.	REV.
NONE	B	DOD-CI-STR1	-
MODEL	CI-STR1	SHEET	1 OF 1