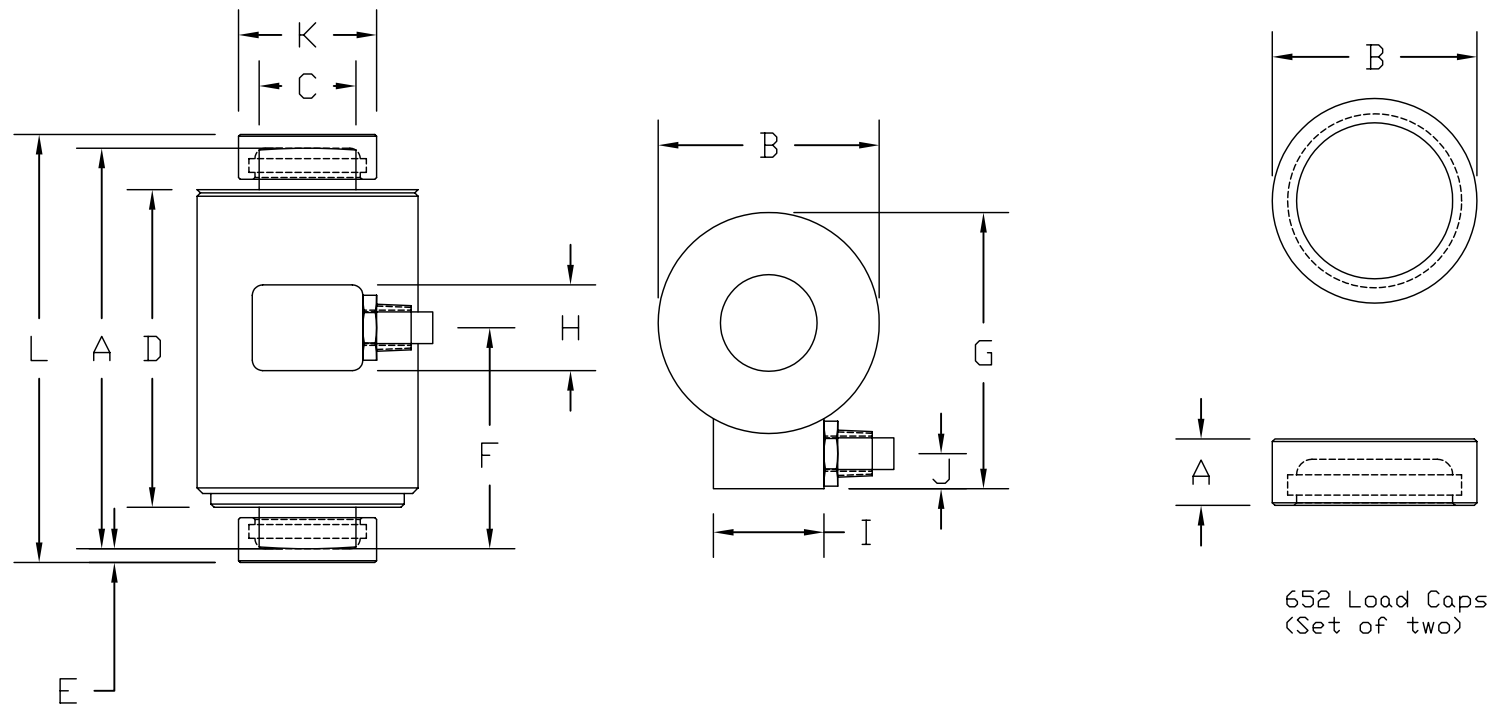


REVISIONS							
ZONE	LTR.	DESCRIPTION	DATE	ECN	BY	CKD	APVD
-	-	INITIAL RELEASE	11/03/06	-	-	-	-



PERFORMANCE SPECIFICATIONS:

1. CAPACITIES: 50K & 120K LB
2. RATED OUTPUT: 2.00 mV/V ±1%
3. SAFE OVERLOAD: 150% FS
4. EXCITATION VOLTAGE: 10-15V AC/DC
5. BRIDGE RESISTANCE: 1050 OHMS
6. ZERO BALANCE: ±1.00% FS
7. SEAL TYPE: HERMETICALLY SEALED
8. NTEP RATED
9. CLASS 111L, 10,000 DIVISION, MULTIPLE CELL
10. COMPENSATED TEMPERATURE RANGE: -10°C - +40°C
11. TEMPERATURE EFFECT ON ZERO: ±0.02%FS/10°C
12. TEMPERATURE EFFECT ON OUTPUT: ±0.02%FS/10°C
13. INSULATION RESISTANCE: >5000 MEGOHMS
14. LOAD CELL CABLE: 4 CONDUCTOR, 50 FT
15. LOAD CELL WIRING:
 - GREEN +EXC
 - BLACK -EXC
 - WHITE +SIG
 - RED -SIG
 - BRAID/YELLOW: SHIELD

RATED CAPACITY	DIMENSIONS												
	A	B	C	D	E	F	G	H	I	J	K	L	
50K Load Cell	7.25	4.00	1.75	5.75	0.75	4.00	5.00	1.55	2.00	0.62	2.50	7.75	
120K Load Cell	7.25	4.00	1.75	5.75	0.75	4.00	5.00	1.55	2.00	0.62	2.50	7.75	
652 Load Caps	0.82	2.50	-	-	-	-	-	-	-	-	-	-	

DO NOT ALTER WITHOUT AGENCY NOTIFICATION



**CP 26S COMPRESSION CANISTER
NTEP LOAD CELL**

<p>THIS DRAWING USES THIRD ANGLE PROJECTION</p>	<p>THIS DOCUMENT CONTAINS PROPRIETARY INFORMATION AND SUCH INFORMATION MAY NOT BE REPRODUCED OR DISCLOSED FOR ANY PURPOSE OR USED TO PRODUCE THE ARTICLE OR SUBJECT WITHOUT WRITTEN PERMISSION FROM COTI, INC.</p>	<p>TOLERANCES UNLESS OTHERWISE SPECIFIED .XX-±0.01 .XXX-±0.005 FRACTIONS-±1/16" ANGLES: ±1/2"</p>	APPROVALS		DATE
			DRAWN: MP	11/03/06	
			CHECKED: AA	11/03/06	
			ENGINEER: WH	11/03/06	
APPROVED: WH			11/03/06		
MATERIAL			STAINLESS STEEL		

SCALE	SIZE	PART/DRAWING NO.	REV.
NONE	B	DOD-CP 26S	-
MODEL CP 26S		SHEET 1 OF 1	