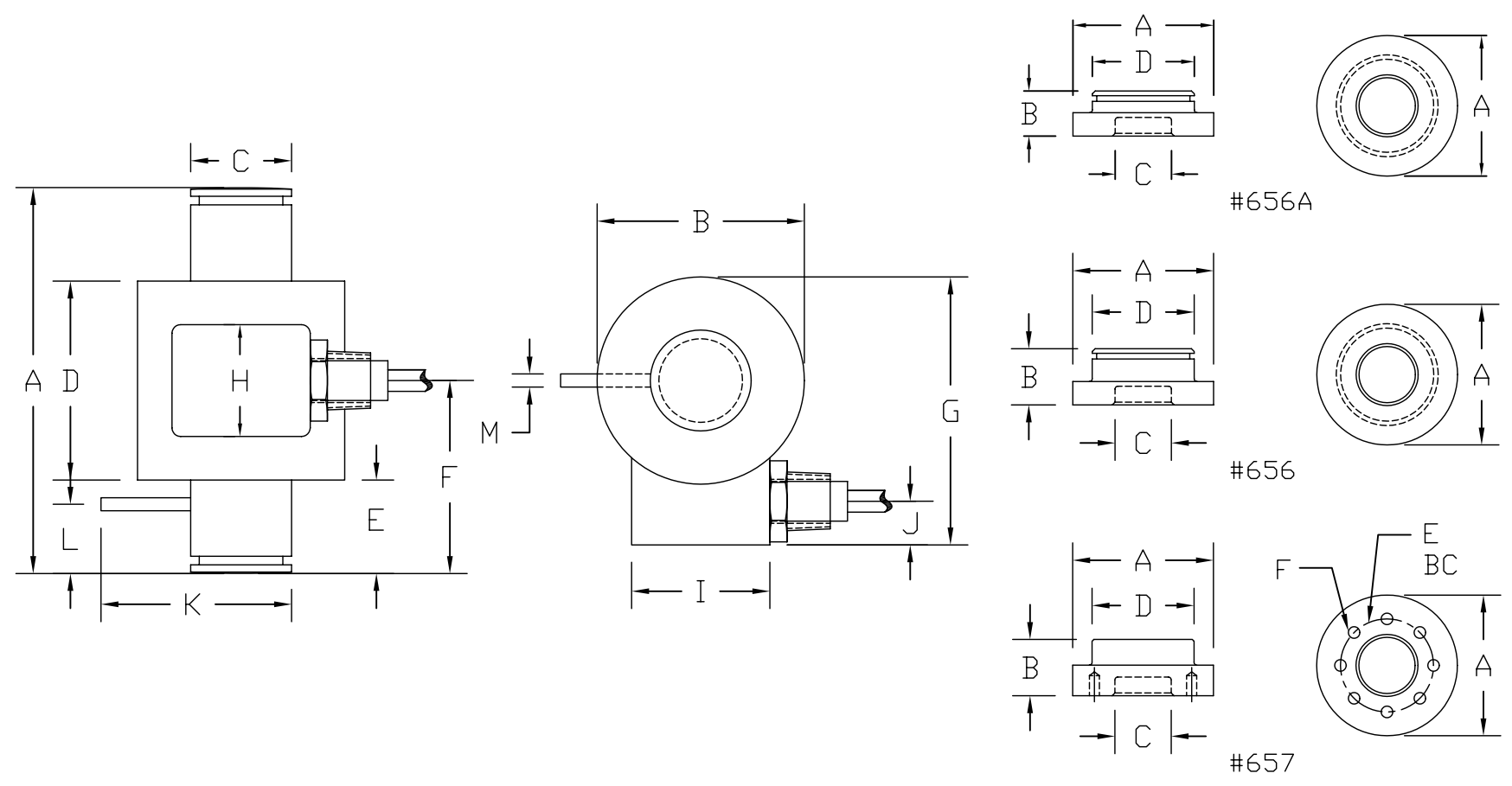


REVISIONS							
ZONE	LTR.	DESCRIPTION	DATE	ECN	BY	CKD	APVD
-	-	INITIAL RELEASE	11/03/06	-	-	-	-
-	A	ADDED PART # 656A. EDITED TABLE.	03/29/07	022	MP	AA	WH

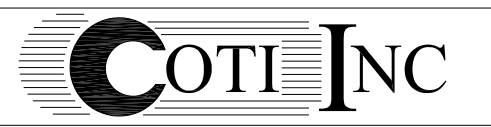


PERFORMANCE SPECIFICATIONS:

1. CAPACITIES: 30T/56K LB
2. RATED OUTPUT: 2.00 mV/V ±1%
3. SAFE OVERLOAD: 150% FS
4. EXCITATION VOLTAGE: 10-15V AC/DC
5. BRIDGE RESISTANCE: 350 OHMS
6. ZERO BALANCE: ±1.00% FS
7. SEAL TYPE: HERMETICALLY SEALED
8. NTEP RATED
9. CLASS 111L, 10,000 DIVISION, MULTIPLE CELL
10. COMPENSATED TEMPERATURE RANGE: -10°C - +40°C
11. TEMPERATURE EFFECT ON ZERO: ±0.02%FS/10°C
12. TEMPERATURE EFFECT ON OUTPUT: ±0.02%FS/10°C
13. INSULATION RESISTANCE: >5000 MEGOHMS
14. LOAD CELL CABLE: 4 CONDUCTOR, 50 FT (BRAIDED SHEILD)
15. LOAD CELL WIRING:
 - GREEN +EXC
 - BLACK -EXC
 - WHITE +SIG
 - RED -SIG
 - BRAID/YELLOW: SHIELD

RATED CAPACITY	DIMENSIONS												
	A	B	C	D	E	F	G	H	I	J	K	L	M
30T/56K	7.56	3.00	1.46	2.88	2.34	3.78	3.88	1.62	2.00	0.50	2.88	1.00	0.038
656A	3.75	1.25	1.50	2.465	-	-	-	-	-	-	-	-	-
656	3.75	1.50	1.50	2.465	-	-	-	-	-	-	-	-	-
657	4.13	1.69	1.50	2.71	2.25	M10x1.0	-	-	-	-	-	-	-

DO NOT ALTER WITHOUT AGENCY NOTIFICATION



**CP 26S2 COMPRESSION CANISTER
NTEP LOAD CELL**

<p>THIS DRAWING USES THIRD ANGLE PROJECTION</p>	<p>THIS DOCUMENT CONTAINS PROPRIETARY INFORMATION AND SUCH INFORMATION MAY NOT BE REPRODUCED OR DISCLOSED FOR ANY PURPOSE OR USED TO PRODUCE THE ARTICLE OR SUBJECT WITHOUT WRITTEN PERMISSION FROM COTI, INC.</p>	<p>TOLERANCES UNLESS OTHERWISE SPECIFIED .XX-±.01 .XXX-±.005 FRACTIONS-±1/16" ANGLES: ±1/2"</p>	APPROVALS		DATE
			DRAWN: MP	11/03/06	
			CHECKED: AA	03/29/07	
			ENGINEER: WH	03/29/07	
MATERIAL			APPROVED: WH	03/29/07	
STAINLESS STEEL					

SCALE	SIZE	PART/DRAWING NO.	REV.
NONE	B	DOD-CP 26S2	A
MODEL	CP 26S2	SHEET	1 OF 1