

CP / CSP

Canister Load Cell

**Factory
Mutual
System**



High Accuracy Load Cell

- ✓ **Stainless Steel Construction**
- ✓ **Capacities from 10K to 500K pounds.**
- ✓ **Multicolumn construction**
- ✓ **Factory Mutual Approved**
- ✓ **CSP NTEP Certificate 88-082 IIIIL 10,000 div**
- ✓ **Exceeds NEMA 6 and IP67**
- ✓ **Operational from -65° F to + 200° F**



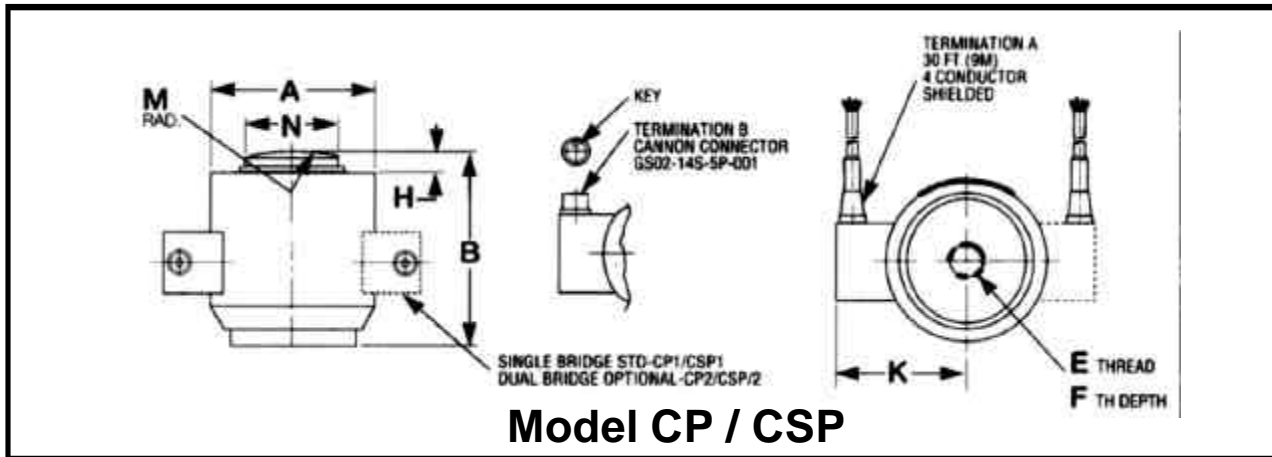
Totalcomp[®]

Scales & Components

13-01 Pollitt Drive • Fair Lawn, New Jersey 07410

Fax: 201-797-2287 • Toll Free Fax: 888-797-2288 • Phone: 201-797-2718 • Toll Free Phone: 800-631-0347

SPECIFICATIONS



Capacity	A	B	E	F	H	K	M	N	Deflection	Weight
10K, 25K, 50K lbs	2.88	3.25	½ - 20-UNF-2B	.31	.40	3.3	6.00	1.25	.003	6 lbs
100K	4.12	5.00	¾ - 16-UNF-2B	.56	.51	3.5	6.00	2.31	.006	14 lbs
200K, 300K	6.00	7.25	¾ - 16-UNF-2B	.75	1.04	4.6	17.00	3.13	.006	38 lbs
500K	6.50	9.00	¾ - 16-UNF-2B	.75	.56	4.8	17.00	3.69	.009	53 lbs

Stainless Steel Load Cell

Interchangeable with Totalcomp TCP1(CP) and TCSP1 (CSP)

Industrial quality, heavy duty construction, load cells will perform well under extreme environmental conditions. These are top of the line with welded, hermetically sealed cases that contain the strain gages. They should be used as replacement cells for weighing applications that demand the highest degree of reliability such as Truck, Track, Hopper and Tank scales. These cells cost more than nonhermetically sealed units: but this must be compared to the potential cost of the scale being out of service

Rated Output
1.57 mv/v (CP) - 2 mv/v ± 0.10% (CSP)
Nonlinearity
±0.05% RO
Repeatability
0.03 (CP) - 0.02 (CSP) % RO
Compensated Temperature Range
0°F to + 150°F
Safe Temperature Range
-65° to + 200°F

Temperature Effect on Zero Balance
0.005% (CP) RO/°F - 0.008% (CSP)
Temperature Effect on Rated Output
0.005% (CP) RO/°F - 0.0008%/°F (CSP)
Recommended Excitation
10 volts AC or DC - Max 25 volts
Zero Balance
±2.0% (CP) - 1.0% (CSP)
Input Output Resistance
450 / 480 Ohms ± 5

Safe Overload
150% of rated capacity
Ultimate Overload
300% of rated capacity
Cable Color Code
Green.....+Excitation
Black.....-Excitation
White.....+Output
Red.....-Output
Bare.....Shield

TOTALCOMP LIMITED WARRANTY

Totalcomp warrants this product to be free of defects in materials and/or workmanship and suitable for the purpose(s) intended as outlined on this sheet. This warranty is effective and shall cover the purchaser for one year from the date of shipment from our plant. If this product is found to be defective by your inspection in accordance with the above listed criteria, we will replace or repair it at our expense. For warranty service, please obtain a return authorization number from us and return the item, shipping prepaid, with a written description of the problem. We will respond promptly with the results of our evaluation.



Totalcomp[®]

Scales & Components

13-01 Pollitt Drive
Fair Lawn, NJ 07410
Fax (201) 797-2287
Toll Free Fax (888) 797-2288
Phone (201) 797-2718
Toll Free Phone (800) 631-0347