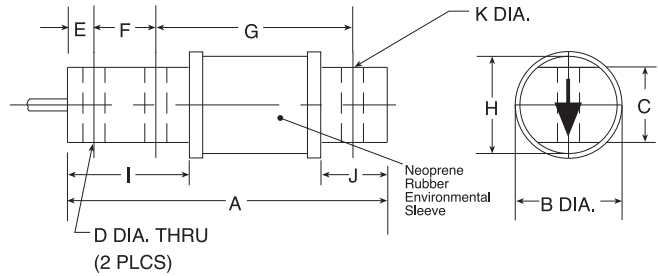
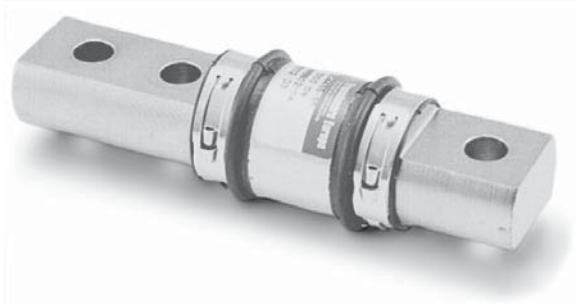


5102 Single-Ended Beam, Alloy Steel, IP67



Picture is a representation of actual product

| RATED CAPACITY | DIMENSIONS | | | | | | | | | | | |
|------------------|------------|------|------|------|------|------|-------|------|------|------|------|--|
| | A | B | C | D | E | F | G | H | I | J | K | |
| lb/inches | | | | | | | | | | | | |
| 50-200 | 5.00 | 1.25 | .75 | .27 | .38 | .62 | 3.50 | 1.23 | 1.50 | 1.25 | .39 | |
| 500-1000 | 5.38 | 1.25 | .75 | .41 | .62 | 1.00 | 3.25 | 1.23 | 2.07 | 1.20 | .41 | |
| 2500 | 5.38 | 1.25 | .75 | .41 | .62 | 1.00 | 3.25 | 1.23 | 2.07 | 1.20 | .53 | |
| 5000-10000 | 7.28 | 1.75 | 1.38 | .66 | .75 | 1.75 | 4.03 | 1.70 | 3.47 | 1.56 | .78 | |
| kg/mm | | | | | | | | | | | | |
| 22.7-90.7 | 127.0 | 31.7 | 19.1 | 6.9 | 9.7 | 15.7 | 88.9 | 31.2 | 38.1 | 31.8 | 9.9 | |
| 226.8-453.6 | 136.7 | 31.7 | 19.1 | 10.4 | 15.8 | 25.4 | 82.6 | 31.2 | 52.6 | 30.5 | 10.3 | |
| 1134.0 | 136.7 | 31.7 | 19.1 | 10.4 | 15.8 | 25.4 | 82.6 | 31.2 | 52.6 | 30.5 | 13.5 | |
| 2268.0-4535.9 | 184.9 | 44.4 | 34.9 | 16.8 | 19.1 | 44.5 | 102.4 | 43.2 | 88.1 | 39.6 | 19.8 | |

SPECIFICATIONS:

| | | | |
|-------------------------------|--|--------------------------------|---|
| Full Scale Output: | 2.0 mV/V | Deflection at Capacity: | 50-200 lb = .020"/.51 mm, 500-2500 lb = .026"/.66 mm 5000-10,000 lb = 0.38"/.97 mm |
| Bridge Resistance: | 350 ohms, nominal | Seal Type: | Environmentally-sealed with neoprene sleeve, IP67 |
| Material/Finish: | High-alloy steel, nickel plated | Cable Length: | 10'/3.1 m |
| Temperature: | Compensated range 0°F to 150°F/-18°C to 65° C | Cable Color Code: | Red + Excitation Black..... - Excitation Green..... + Signal White - Signal Orange.... Shield |
| Safe Overload: | 150% Full scale | Warranty: | 2-year limited warranty |
| Rated Excitation: | 10V DC (15V maximum) | | |
| Combined Error: | 0.03% Full scale | | |
| Non-repeatability: | 0.01% Full scale | | |
| Insulation Resistance: | 5000 megohms | | |

5102 ORDER INFORMATION

| Load Rating | Part # | Price |
|-----------------------|--------|----------|
| 50 lb (22.7 kg) | 21709 | \$485.00 |
| 100 lb (45.4 kg) | 21710 | \$485.00 |
| 200 lb (90.7 kg) | 21711 | \$485.00 |
| 500 lb (226.8 kg) | 21712 | \$485.00 |
| 1000 lb (453.6 kg) | 21713 | \$505.00 |
| 2500 lb (1134.0 kg) | 21714 | \$505.00 |
| 5000 lb (2268.0 kg) | 21715 | \$585.00 |
| 10,000 lb (4535.9 kg) | 21716 | \$585.00 |

INTERCHANGEABLE PRODUCTS

| Manufacturer | Model |
|--------------------|---------------------|
| Revere Transducers | (see page 264) 9102 |

Revere Transducers, Inc.