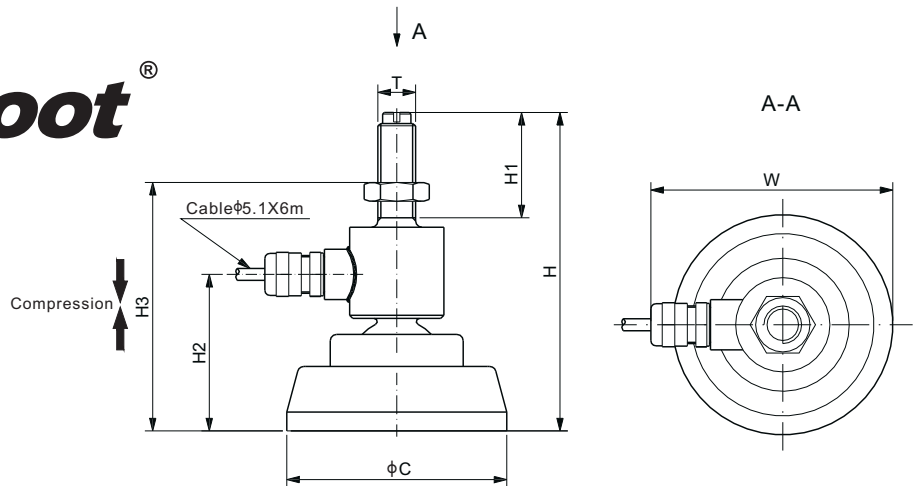


# 106MS-F-YZ

Stainless Steel



CE RoHS

## DIMENSIONS

RATED CAPACITY	C	H	H1	H2	H3	W	T
<b>t/mm</b>							
0.5-1	70.0	101.3	33.5	51.8	76.0-99.0	77.0	M12
2	70.0	119.8	50.0	51.8	78.0-116.0	77.0	M16
5	80.0	132.8	55.0	59.8	87.0-127.0	82.0	M20
10	100.0	187.3	80.0	81.3	118.0-180.0	96.0	M24x2
<b>Klb/inches</b>							
1-2.5	2.76	3.99	1.32	1.96	2.99-3.90	3.03	1/2-20 UNF
5-10	3.15	5.23	2.17	2.35	3.43-5.00	3.23	3/4-16 UNF
20	3.94	7.37	3.15	3.20	4.65-7.09	3.78	1-14 UNS

## SPECIFICATIONS

<b>Full Scale Output</b>	2.0 mV/V ± 0.25%	<b>Recommended Excitation</b>	10V (15V Maximum)
<b>Zero Balance</b>	± 0.04 mV/V	<b>Insulation Resistance</b>	> 2 [ 50V DC ] GΩ
<b>Non-linearity</b>	Cap. ≤ 2t: < ± 0.050%; Cap. > 2t: < ± 0.2%	<b>Compensated Temperature Range</b>	-10°C to 50°C / 14°F to 122°F
<b>Repeatability</b>	< ± 0.030%	<b>Safe Overload</b>	150% of full scale
<b>Hysteresis Error</b>	< ± 0.050%	<b>Breaking Overload</b>	300% of full scale
<b>Creep in 30 min.</b>	< ± 0.030%	<b>Seal Type / IP Rating</b>	Welded Seal / IP67
<b>Input Resistance</b>	380 Ω ± 20	<b>Cable Color Code</b>	Exc+ Red      Exc- Black
<b>Output Resistance</b>	350 Ω ± 3		Sig+ Green    Sig- White
<b>Element Material</b>	2Cr13 Stainless Steel		Shield Bare

## PART NUMBER

Rated Capacity	Part No.	Weight (kg) Approx.
500kg.....	106MS-F-500kg-YZ.....	1.0
1t.....	106MS-F-1t-YZ.....	1.0
2t.....	106MS-F-2t-YZ.....	1.0
5t.....	106MS-F-5t-YZ.....	-
10t.....	106MS-F-10t-YZ.....	-
1Klb.....	106MS-F-1Klb-YZ.....	1.0
2.5Klb.....	106MS-F-2.5Klb-YZ.....	1.0
5Klb.....	106MS-F-5Klb-YZ.....	-
10Klb.....	106MS-F-10Klb-YZ.....	-
20Klb.....	106MS-F-20Klb-YZ.....	-

CANISTERS & DISKS



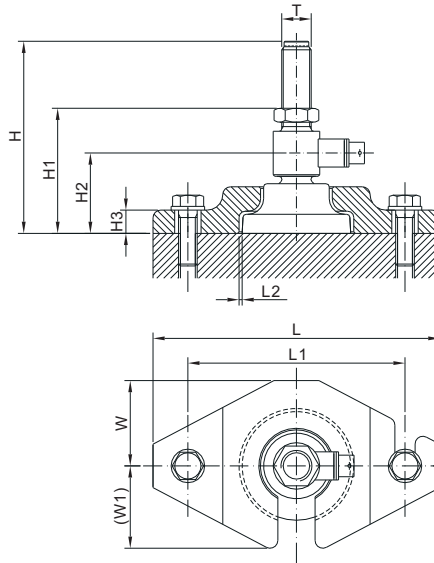
### Features:

- Assembles: 106MH-F Fatfoot® load cell
- Capacities: 500kg, 1t, 2t, 1Klb, 2.5Klb, 5Klb, 10Klb
- Center pivoted and Self-checking with 50% rated load anti-lifting protection
- All direction for thermal expansion and contraction

Load Cell Certifications:

**CE RoHS**

Load Cell Not Included.



### DIMENSIONS

LOAD CELL CAPACITY	H	H1	H2	H3	L	L1	L2	W	W1	T
<b>Klb/inches</b>										
1-2.5	3.75	2.67-3.58	1.72	0.55	6.89	5.51	0.08	1.97	1.95	1/2-20 UNF
5-10	4.87	3.07-4.65	2.00	0.59	7.28	5.51	0.08	2.17	2.13	3/4-16 UNF
<b>t/mm</b>										
0.5-1	95.3	68.0-91.0	43.8	14.0	175.0	140.0	2.0	50.0	49.5	M12
2	111.8	70.0-108.0	43.8	14.0	175.0	140.0	2.0	50.0	49.5	M16

### PART NUMBER

Load Cell Capacity	Part No.	Weight (kg) Approx.
1Klb-2.5Klb .....	106MHM1-(1-2.5)Klb .....	1.38
5Klb-10Klb.....	106MHM1-(5-10)Klb .....	-
0.5t-1t.....	106MHM1-(0.5-1)t .....	1.38
2t .....	106MHM1-2t .....	-