

MODEL 263D S TYPE LOAD CELL

FEATURES:

- Capacities of 50 to 3K pounds
- Redundant sealing
- Nickel plated alloy steel
- Compression fitting cable entry
- Low profile design
- Threaded 1/2" load holes, all sizes
- Operational from -65°F to +200°F
- Factory Mutual approved for intrinsic safety*
- Exceeds NEW 1986 Scales Code
- Exceeds IP67 and NEMA 6 standards for washdown resistance

DESCRIPTION:

The Model 263D is a bending beam in an "S" cell configuration. It is a tough, conservatively designed load cell useful in all steelyard rod conversions and process applications, particularly in harsh environments. The redundant seal is a combination of TRANSEAL II, a proprietary waterproofing compound, and a neoprene boot secured with stainless steel bands covering the gage area. This allows the load cell to be submerged without affecting accuracy.

The cell is supplied with an integral 10-foot cable, secured by a specially designed compression sealed strain relief cable gland. The 263D is also Factory Mutual approved and exceeds the NEW H-44 Class III requirements.

*FACTORY MUTUAL SYSTEM approved. All RTI load cells have been tested and approved as intrinsically safe by Factory Mutual Research when installed with approved barrier strip. Contact RTI factory for detailed information.

SPECIFICATIONS:

MODEL	263D
Standard Capacities	
Pounds (lbs.)	50, 100, 200, 250, 300, 500, 1K, 2K, 3K
Metric (Approx.)	23kg, 45kg, 91kg, 110kg, 140kg, 230kg, 450kg, 910kg, 1.4t
Accuracy Class	0.03
Accuracy Designation	D3
Excitation (VDC or VAC _{rms})	10 Nom., 15 Max.
Rated Output (mV/V)	3±0.06
Zero Balance (%FS)	1.0
Resistance	
Input (ohms)	350 Nom.
Output (ohms)	350±3.5
Combined Error (%FS)*	0.03
Non-Repeatability (%FS)	0.01
Creep (% Load/20 min.)	0.03
Temperature Sensitivity	
Output (% Load/°F, % Load/5°C)	0.0008, 0.0072
Zero (%FS/°F, %FS/5°C)	0.0015, 0.014
Temperature Range	
Compensated (°F, °C)	0 to 150 or -15 to 65
Operating (°F, °C)	-65 to 200 or -50 to 90
Element Material	NP Alloy Steel
Seal	TRANSEAL II & Neoprene Boot secured by adhesive & stainless steel bands
Safe Overload (%FS)	150
Ultimate Overload (%FS)	300
Safe Sideload (%FS)	50

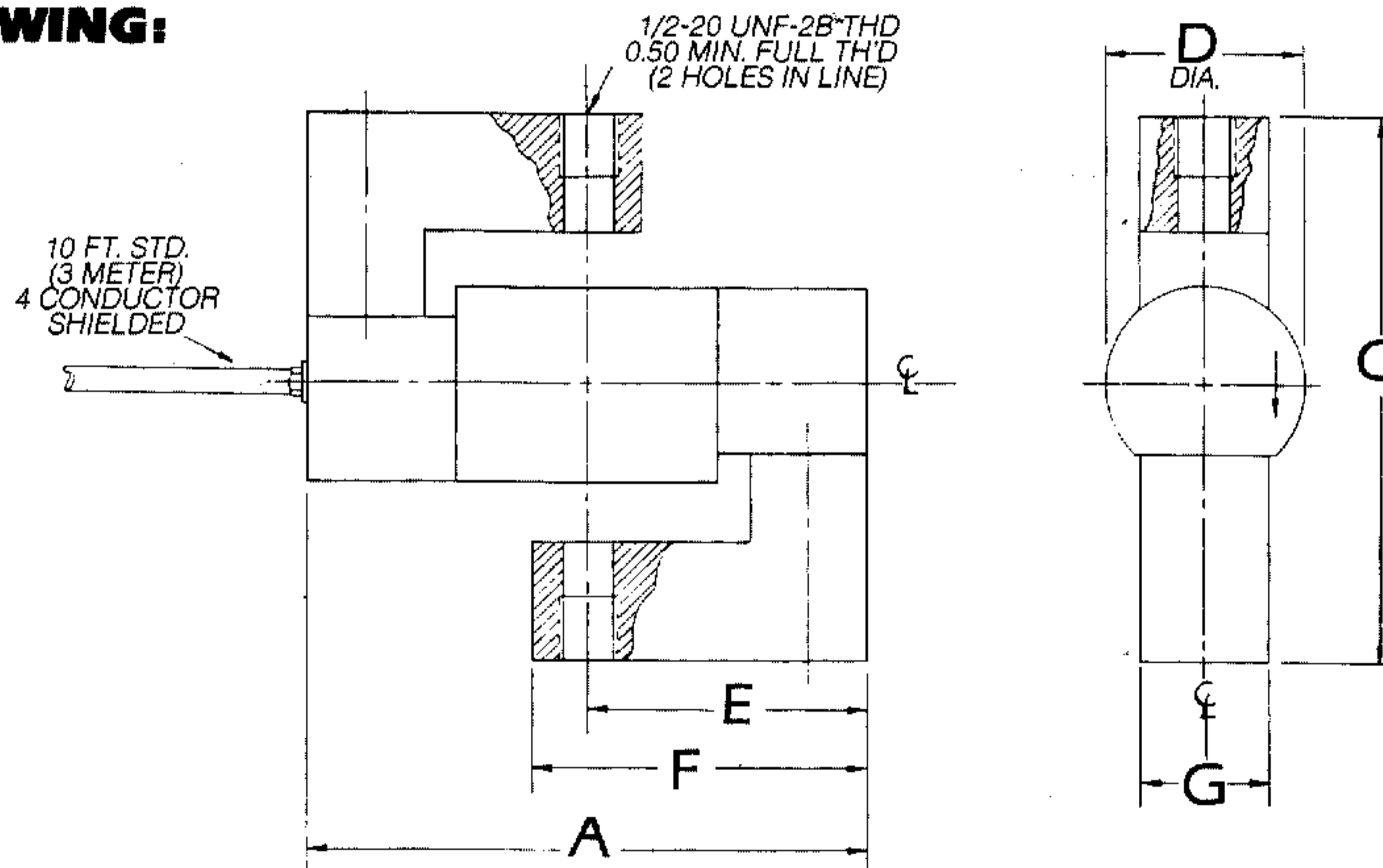
NOTES:

- The maximum deviation for both increasing and decreasing load from a straight line between no load and rated load at constant temperature. Includes effects of non-linearity and hysteresis.

OUTLINE DRAWING:

WIRING:

FUNCTION	COLOR
+Excitation	Red
-Excitation	Black
+Output	Green
-Output	White
Shield	Orange



DIMENSIONS — Inch & (mm)

CAPACITY lbs. (kg or ton)	A	C	D	E	F	G	APPROXIMATE DEFLECTION	WEIGHT lbs. (kg)
50-1K (23-450)	4.08 (103.6)	3.00 (76.2)	1.51 (38.4)	2.040±0.015 (51.8±0.4)	2.70±0.02 (68.6±0.5)	1.00 (25.4)	.022 max (.6)	2.5 (1.1)
2K-3K (910-1400)	4.38 (111.3)	4.56 (115.8)	2.16 (54.9)	2.190±0.015 (55.6±0.4)	2.90±0.02 (73.7±0.5)	1.25 (31.8)	.05 max (1.3)	5.0 (2.3)

ORDERING INFORMATION:

Specify model number, accuracy designator & capacity.

12/90 3K

ALL SPECIFICATIONS SUBJECT TO CHANGE WITHOUT NOTICE.