

D1250

Single Point



Top Quality from Diamond

- *Stainless Steel*
- *Reliable - durable precise*
- *Interchangeable with Tedeo 1250*
- *Capacities from 100 lb to 2,000 lb*
- *Environmentally sealed IP67*
- *8 ft 4 cond cable*

 **Totalcomp** Scales & Components

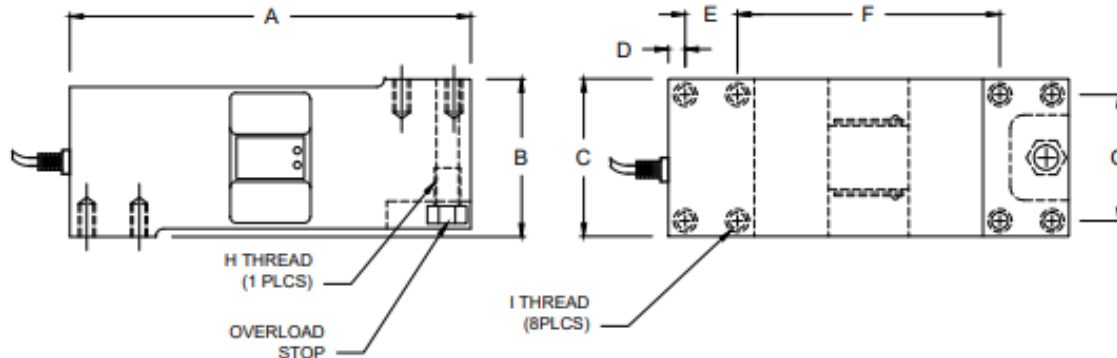
13-01 Pollitt Drive Ext, Fair Lawn NJ 07410
Phone 201-797-2718 Fax 201-797-2287

email: sales@totalcomp.com

Specifications

D1250

The Diamond single point (D1250) load cells are interchangeable with TedeA 1250 series.. They are built to meet or exceed all manufacturers specs for this type of cell. They are constructed from stainless steel for washability and protection from harsh environments.



RATED CAPACITY	DIMENSIONS								
	A	B	C	D	E	F	G	H	I
50 to 1000KG	7.52	2.95	2.95	0.31	0.98	4.92	2.36	1/2-20UNFx0.50dp	5/16-18UNCx0.62dp

Part Number	Capacity	Stock	Weight
D1250-100-SS	100 lb	7072	15 lb
D1250-250-SS	250 lb	7073	15 lb
D1250-500-SS	500 lb	7074	15 lb
D1250-750-SS	750 lb	7075	15 lb
D1250-1K-SS	1,000 lb	7076	15 lb
D1250-2K-SS	2,000 lb	7077	15 lb

Performance

Full Scale Output	2.00 mv/v
Combined error	0.03% FS
Nonlinearity	0.02% FS
Hysteresis	0.02% FS
Creep in 30 min	0.03% FS
Non-Repeatabillity	0.01% FS
Zero Balance	1.0% FS
Overload, Safe	200% FS
Overload, Ultimate	300% FS

Electrical

Bridge Resistance	
Input	410 ohms
Output	350 ohms
Excitation Voltage	10VDC(15VDC Max)
Insulation Resistance	10KMohms@50VDC

Temperature

Compensated Range	-10 deg C to +40 deg C
Temperature Operating Range	-20 deg C to +60 deg C

Effect on Zero Balance

Effect on Zero Balance	0.0013% FS/ deg C
Effect on FS Output	0.0007% FS/ deg C

Mechanical

Material	Stainless steel
Finish	Polished SS
Sealing	IP67

Wiring

Cable length & Type	8 foot, 4 conductor
---------------------	---------------------

Cable Color Code

+ Excitation	Green
- Excitation	Black
+ Output	White
- Output	Red
Shield	Bare

Totalcomp Limited Warranty

Totalcomp warrants this product to be free of defects in materials and/or workmanship and suitable for the purpose intended as outlined in this sheet. This warranty is effective and shall cover the purchaser for one year from the date of shipment from our plant. If this product is found to be defective by our inspection in accordance with the above listed criteria, we will replace or repair it at our expense. For warranty service, please obtain a return authorization number from us and return the item, shipping prepaid, with a written description of the problem. We will respond promptly with the results of our evaluation.



Totalcomp Scales & Components

13-01 Pollitt Drive Ext, Fair Lawn NJ 07410

Phone 201-797-2718 Fax 201-797-2287

email: sales@totalcomp.com