

**DSB-SSH**

**BEAM LOAD CELL**



**High quality, affordable  
Stainless Steel shear beam used in  
harsh environment applications**

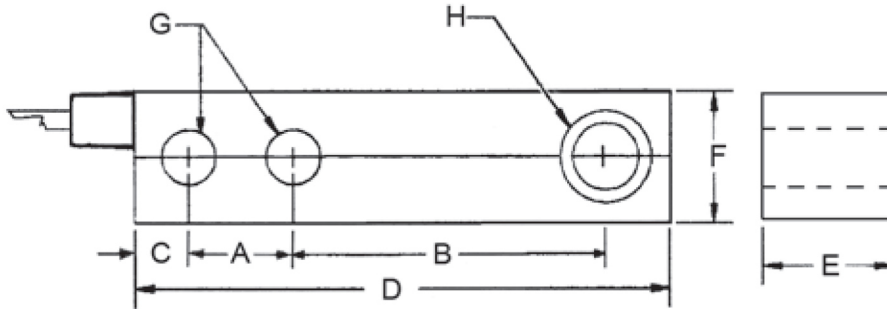
- ✓ **Stainless Steel housing hermetically sealed**
- ✓ **Interchangeable with TSB-SS, 65023-SS, 9123, and TBH35**
- ✓ **Capacities from 250 lb. to 20,000 lb.**
- ✓ **Four conductor, 20ft cable**
- ✓ **Accurate and reliable weighing performance**



**Totalcomp**<sup>®</sup> Scales & Components

99 Reagent Lane • Fair Lawn, New Jersey 07410  
Fax: 201-797-2287 • Toll Free Fax: 888-797-2288 • Phone: 201-797-2718 • Toll Free Phone: 800-631-0347  
Email: [sales@totalcomp.com](mailto:sales@totalcomp.com) • Website: [www.totalcomp.com](http://www.totalcomp.com)

# SPECIFICATIONS



## DSB-SSH DIAMOND BEAM LOAD CELL

Part Number	Capacity	Weight	A	B	C	D	E	F	G	H
*DSB-250-SSP	250 lb	3 lb	1.00	3.00	0.60	5.12	1.25	1.25	0.53	1/2-20UNF
*DSB-500-SSP	500 lb	3 lb	1.00	3.00	0.60	5.12	1.25	1.25	0.53	1/2-20UNF
DSB-1K-SSH	1,000 lb	3 lb	1.00	3.00	0.60	5.12	1.25	1.25	0.53	1/2-20UNF
DSB-1.5K-SSH	1,500 lb	3 lb	1.00	3.00	0.60	5.12	1.25	1.25	0.53	1/2-20UNF
DSB-2K-SSH	2,000 lb	3 lb	1.00	3.00	0.60	5.12	1.25	1.25	0.53	1/2-20UNF
DSB-2.5K-SSH	2,500 lb	3 lb	1.00	3.00	0.60	5.12	1.25	1.25	0.53	1/2-20UNF
DSB-4K-SSH	4,000 lb	3 lb	1.00	3.00	0.60	5.12	1.25	1.25	0.53	1/2-20UNF
DSB-5KSE-SSH	5,000 lb	3 lb	1.00	3.00	0.60	5.12	1.25	1.25	0.53	1/2-20UNF
DSB-5K-SSH	5,000 lb	5 lb	1.50	3.75	0.75	6.75	1.50	1.50	0.78	3/4-16UNF
DSB-10K-SSH	10,000 lb	5 lb	1.50	3.75	0.75	6.75	1.50	1.50	0.78	3/4-16UNF
DSB-20K-SSH	20,000 lb	9 lb	2.00	4.88	1.00	8.75	2.00	2.00	1.03	1-14UNF

\*250 & 500 lb Stainless Steel potted only

### Full Scale Output

3.00 mV/V

### Combined Error

±0.03% FS

### Nonlinearity

0.02% FS

### Hysteresis

±0.02%

### Creep

±0.02% FS in 1 hour

### Non-Repeatability

±0.01% FS

### Zero Balance

±1.0% FS

### Overload Safe

150% FS

### Overload Ultimate

300% FS

### Bridge Resistance

Input 380ohms

Output 350ohms

### Excitation Voltage

10VDC (20VDC Max)

### Insulation Resistance

5000Mohms

### Compensated Range

-10°C to +50°C

### Temperature Operating Range

-20°C to +60°C

### Effect on Zero Balance

<20 PPM/C° of Applied Load

### Effect on FS Output

<20 PPM/C° of Applied Load

### Element Material/Finish:

Stainless Steel

### Sealing

IP67

### Cable Length & Type:

20 foot, 4 conductor, shielded cable.

### Cable Color Code:

Red.....+ Excitation

Black.....- Excitation

Green.....+ Signal

White.....- Signal

Bare.....Shield

### TOTALCOMP LIMITED WARRANTY

*Totalcomp* warrants this product to be free of defects in materials and/or workmanship and suitable for the purpose(s) intended as outlined on this sheet. This warranty is effective and shall cover the purchaser for one year from the date of shipment from our plant. If this product is found to be defective by our inspection in accordance with the above listed criteria, we will replace or repair it at our expense. For warranty service, please obtain a return authorization number from us and return the item, shipping prepaid, with a written description of the problem. We will respond promptly with the results of our evaluation.



# Totalcomp®

## Scales & Components

99 Reagent Lane

Fair Lawn, NJ 07410

Fax (201) 797-2287

Toll Free Fax (888) 797-2288

Phone (201) 797-2718

Toll Free Phone (800) 631-0347

Email [sales@totalcomp.com](mailto:sales@totalcomp.com)

Website [www.totalcomp.com](http://www.totalcomp.com)