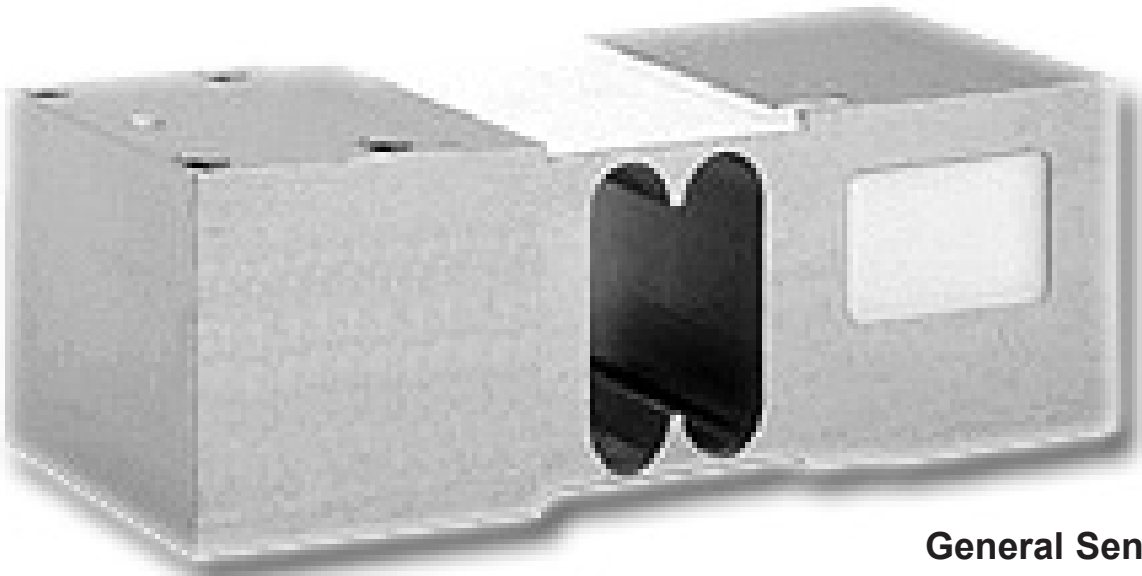


GS1260

Single point load cell



General Sensor
GS1260

Top Quality, single point load cell from General Sensor

- *IP66 protection*
- *Environmentally protected*
- *Anodized aluminum*
- *Reliable - durable precise*
- *Capacities from 100 kg to 250 kg*
- *Includes 3m 6 cond cable*



Totalcomp

Scales & Components

13-01 Pollitt Drive Ext, Fair Lawn NJ 07410
Phone 201-797-2718 Fax 201-797-2287

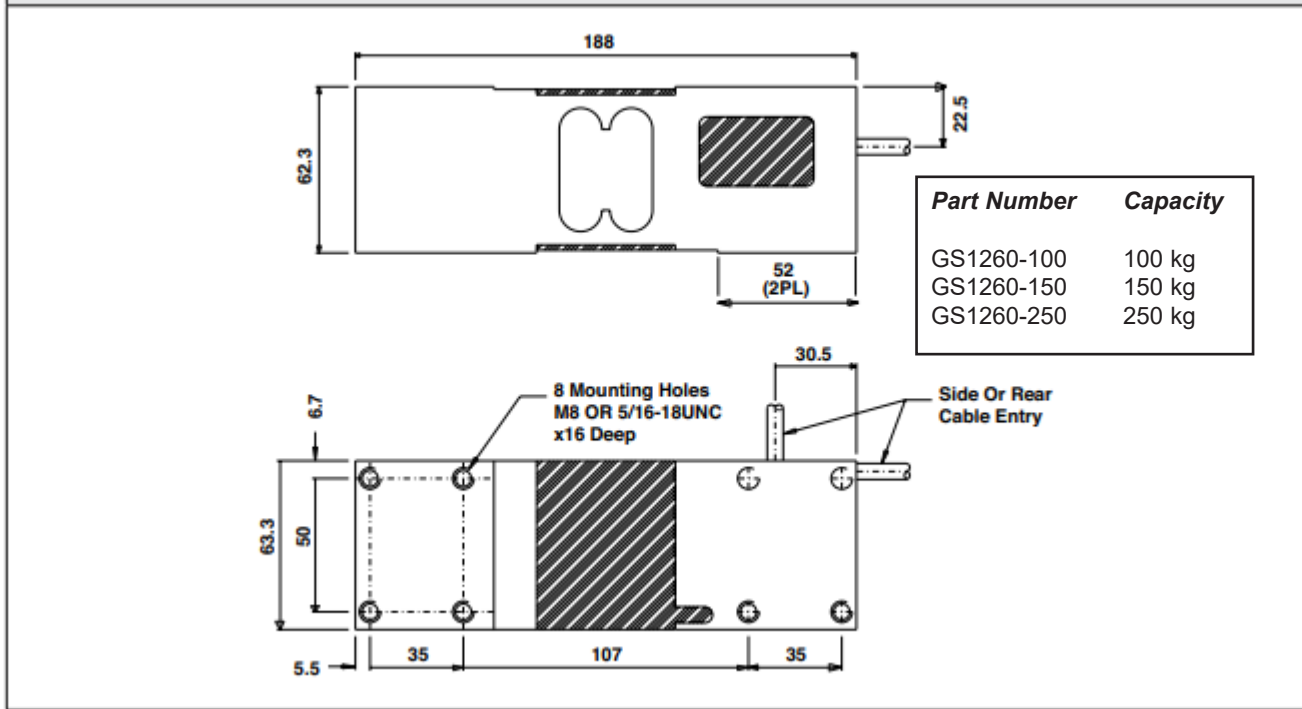
email: sales@totalcomp.com

Specifications

GS1260

The General Sensor GS1260 single point load cells are interchangeable with Tedeo-Huntleigh model 1260. They are built to meet or exceed all manufacturers specs for this type of cell. They are constructed from anodized aluminum and sealed to IP66.

OUTLINE DIMENSIONS in millimeters



Performance

Full Scale Output	2.00 mv/v
Total error	0.05% FS
Nonlinearity	0.03% FS
Hysteresis	0.05% FS
Creep in 30 min	0.03% FS
Non-Repeatability	0.01% FS
Zero Balance	0.20% FS
Overload, Safe	150% FS
Overload, Ultimate	300% FS

Electrical

Bridge Resistance	
Input	415 ohms
Output	350 ohms
Excitation Voltage	10VDC(15VDC Max)
Insulation Resistance	2KMohms@50VDC

Temperature

Compensated Range	-10 deg C to +40 deg C
Temperature Safe Range	-20 deg C to +70 deg C

Effect on Zero Balance	0.0100% FS/ deg C
Effect on FS Output	0.0030% FS/ deg C

Mechanical

Material	Aluminum
Finish	Anodized
Sealing	IP66
Weight	6 lb

Wiring

Cable length & Type	3 m, 6 conductor
---------------------	------------------

Cable Color Code

+ Excitation	Green
- Excitation	Black
+ Sense	Blue
- Sense	Brown
+ Output	Red
- Output	White
Shield	Bare

Totalcomp Limited Warranty

Totalcomp warrants this product to be free of defects in materials and/or workmanship and suitable for the purpose intended as outlined in this sheet. This warranty is effective and shall cover the purchaser for one year from the date of shipment from our plant. If this product is found to be defective by our inspection in accordance with the above listed criteria, we will replace or repair it at our expense. For warranty service, please obtain a return authorization number from us and return the item, shipping prepaid, with a written description of the problem. We will respond promptly with the results of our evaluation.



Totalcomp Scales & Components

13-01 Pollitt Drive Ext, Fair Lawn NJ 07410

Phone 201-797-2718 Fax 201-797-2287 email: sales@totalcomp.com